

**Aggiornamento IDC5**

**CAR 72.0.0**

**TEXA**

## Novità SOFTWARE

## Novità DIAGNOSI

ADAS

Veicoli Elettrici / Ibridi

TPMS

## Novità FUNZIONI SPECIALI

Mercato  
EUROPA

Mercato  
NORD AMERICA

Mercato  
BRASILE

Mercato  
INDIA

## Novità DASHBOARD

Mercato  
EUROPA

Mercato  
NORD AMERICA

Mercato  
BRASILE

Mercato  
INDIA

## Copertura Marche

## Link

# Aggiornamento software IDC5 CAR 72.0.0

l'aggiornamento software **IDC5 CAR 72** racchiude, ancora una volta, un grandissimo numero di sviluppi di diagnosi, il meglio della diagnosi multimarca TEXA dedicata ad auto e veicoli commerciali leggeri. Utilizzare IDC5 CAR nella quotidiana attività in officina significa poter disporre di una soluzione d'avanguardia, ricca di nuove possibilità di diagnosi, funzioni speciali e informazioni tecniche indispensabili per portare a termine a regola d'arte, e con la totale soddisfazione dei vostri clienti, anche le più complicate operazioni d'officina.

IDC5 CAR 72 include **l'aggiornamento di ben 65 marchi**. Per questi, inoltre, sono stati sviluppati nuovi sistemi diagnostici mai rilasciati in precedenza che interessano oltre **950 modelli**. Sono più di **1400 i sistemi diagnostici sviluppati** che coinvolgono oltre **300 impianti**.

Il lavoro dei tecnici sviluppatori TEXA ha portato anche a un incremento ulteriore nella copertura dei sistemi **ADAS**, dei **veicoli elettrici e ibridi** e dei **sistemi TPMS**.

IDC5 CAR 72 contiene anche le novità rilasciate attraverso gli aggiornamenti continui 71.1, 71.2 ed è caratterizzato da oltre **22.000 nuove possibili selezioni** per le maggiori marche presenti sul mercato mondiale, tra le quali: **AUDI, BENTLEY, BMW, BUGATTI, CADILLAC, CHEVROLET, CHRYSLER, CITROËN, DAIHATSU, DODGE, DS, FERRARI, FIAT, FORD, GENESIS, GMC, HOLDEN, HONDA, HYUNDAI, JAGUAR, JEEP, KIA, LAMBORGHINI, LAND ROVER, LEXUS, LINCOLN, MASERATI, MAZDA, MERCEDES-BENZ, MERCURY FORD, MITSUBISHI, NISSAN, OPEL, PEUGEOT, PORSCHE, RENAULT, SEAT, SKODA, SUZUKI, TOYOTA, VOLKSWAGEN, VOLVO**.

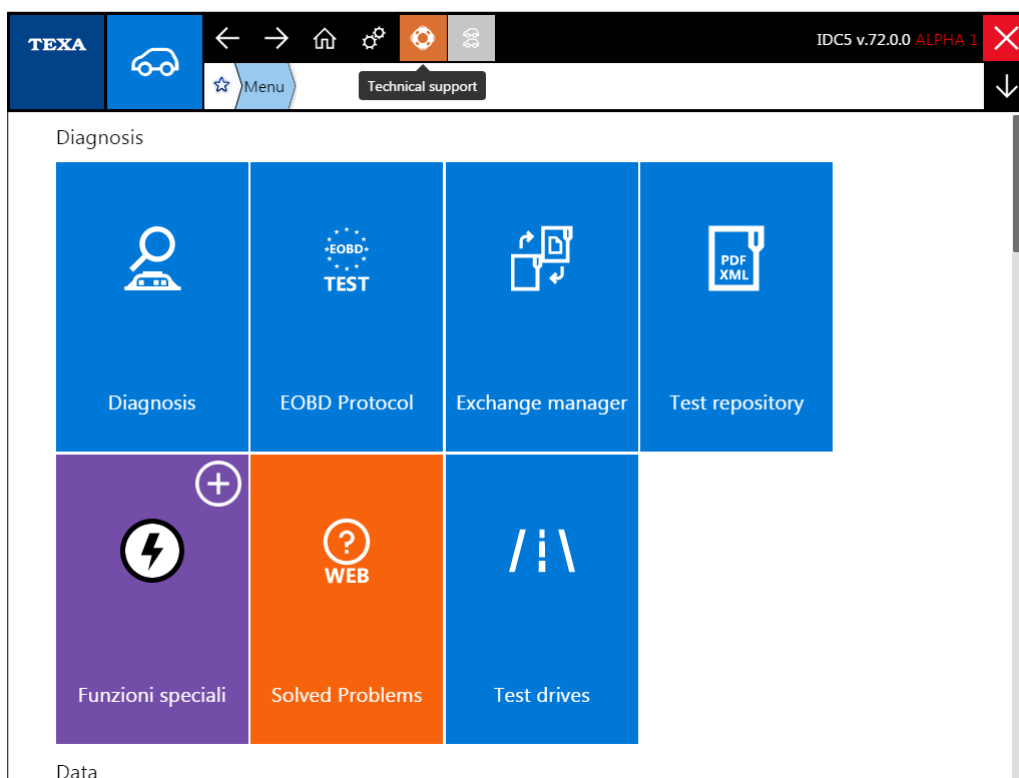
Oltre alla presenza dei veicoli presenti nei mercati **Europa, Nord America, Sud America e Brasile**, ci teniamo a sottolineare anche la copertura per il mercato **India**.

## Novità SOFTWARE

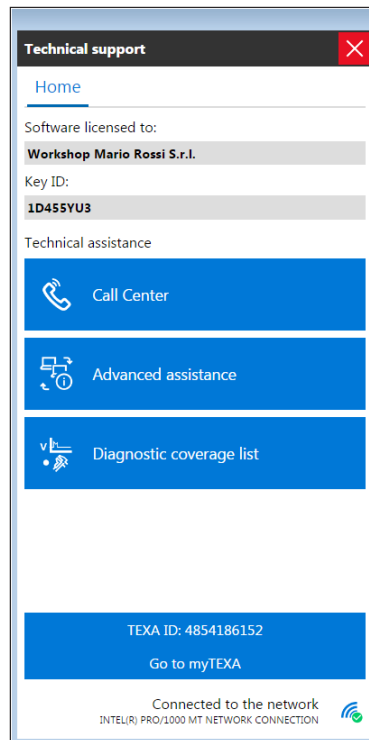
### SUPPORTO TECNICO E ASSISTENZA AVANZATA

A partire dall'aggiornamento CAR 72 le funzionalità legate al Supporto Tecnico sono state ulteriormente potenziate e rese maggiormente fruibili, attraverso un accesso facilitato e un menu di consultazione ancora più intuitivo.

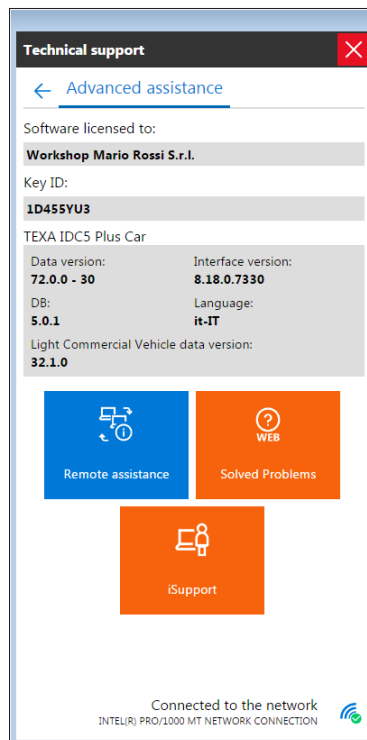
Per usufruirne è sufficiente cliccare sulla nuova icona presente nella barra superiore di IDC5 posta in corrispondenza dell'icona Home.



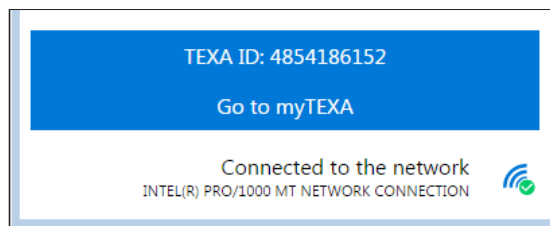
Da qui si accede direttamente alla schermata **“Supporto Tecnico”**, all’interno della quale sono presenti informazioni indispensabili per richiedere assistenza come **“Intestatario licenza software”** e **“ID chiave”**. Subito sotto sono stati raggruppati 3 pulsanti per contattare telefonicamente il **Call Center**, richiedere **Assistenza avanzata** e consultare la **Lista copertura diagnosi** sempre aggiornata.



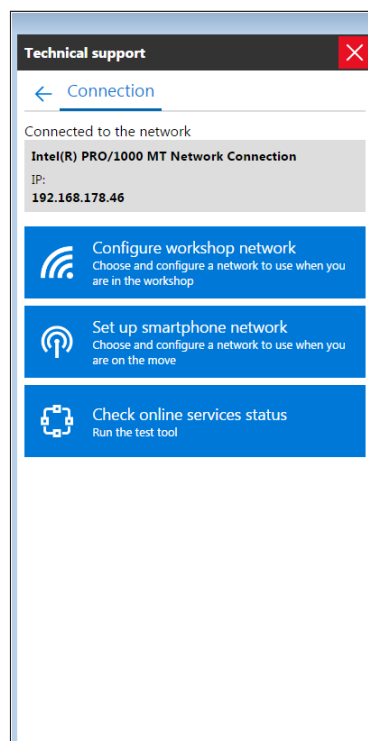
Cliccando su Assistenza avanzata l'officina **può richiedere immediatamente Assistenza remota** sul proprio strumento di diagnosi, consultare la banca dati Guasti Risolti oppure utilizzare iSupport.



Un quarto pulsante posizionato a fine schermata consente invece di conoscere il proprio TEXA ID e di utilizzarlo per avere accesso a myTEXA, il portale che contiene le informazioni personali, la situazione degli strumenti, lo stato degli abbonamenti, dei servizi attivi e che da accesso diretto all'area riservata DOWNLOAD MANAGER.



Selezionando **Connected to the network** si avrà la possibilità di accedere ad alcune funzionalità il cui scopo è quello di rendere più agevole l'attività di connessione dello strumento di diagnosi TEXA alla rete Internet. Il software guiderà l'utente tra i menù di configurazione messi a disposizione dal Sistema Operativo per poter configurare così la propria rete di Officina o il proprio Smartphone al fine di permettere ai software TEXA di comunicare con Internet.



N.B. Affinché le suddette funzionalità risultino utilizzabili è necessario essere in possesso di un abbonamento attivo e verificare, con il proprio rivenditore TEXA di fiducia, che il servizio sia disponibile nel proprio Paese.

ADAS

VEICOLI  
ELETTRICI / IBRIDI

TPMS

## Novità DIAGNOSI

Tra le tantissime novità presenti nell'aggiornamento CAR 72, vale la pena porre l'accento sugli importanti sviluppi dedicati al mondo degli ADAS, dei veicoli elettrici e ibridi e ai sistemi TPMS.

### ADAS

#### ASSISTENZA PER IL CAMBIO DI CORSIA

**AUDI:** A1 [11>18] (8X1/8XF), A1 [12>18] (8XA/8XK) Sportback, A3 [12>] (8VA) Sportback, A3 [14>] (8V7) Cabrio, A3 [14>] (8VS) Sedan, 4 [15>] (8W2), A4 [16>] (8WH) Avant Allroad, A5 [07>16] (8T3) Coupé, A5 [09>16] (8F7) Cabrio, A5 [09>16] (8TA) Sportback, A5 [16>] (F53) Coupé, A5 [16>] (F57) Cabrio, A5 [16>] (F5A) Sportback, A8 [18>] (4N2), A8 [18>] (4N8) L, A8 [18>] (4N8) L, Q2 [16>] (GA), Q3 [11>18] (8UB), Q3 [19>] (F3), Q3 [19>] (F3) Sportback, RS3 [15>] (8VA) Sportback, RS3 [17>] (8VS) Sedan, RSQ3 [19>] (F3), RSQ3 [19>] (F3) Sportback, S4 [16>] (8W2), S4 [16>] (8W5) Avant, S7 [19>] (4KA) Sportback, SQ5 [17>] (FY).

**BMW:** X4 | BR.

**BENTLEY:** Continental [18>] GTC, Continental [18>] GT, Bentayga [15>].

**MERCEDES-BENZ:** AMG GT [18>] (290) Coupé, CLS [18>] (257) Coupé, E [16>] (213) L, E [17>] (238) Cabrio, E [17>] (238) Coupé, EQC [19>] (293), S [13>] (222), S [13>] (222) L, S [14>] (217) Coupé, S [15>] (222) Maybach, S [16>] (217) Cabrio.

**PORSCHE:** Panamera [09>16] (970), Panamera [17>] (971).

**SEAT:** Arona [17>] (KJ7), Ateca [16>] (KH), Leon [12>] (5F1), Leon [14>] (5F8) ST, Tarraco [19>] (KN).

**SKODA:** Karoq [17>] (NU7), Kodiaq [17>] (NS7), Octavia [13>] (5E3), Octavia [13>] (5E5) Kombi, Superb B8 [15>] (3V3), Superb B8 [15>] (3V5) Wagon.

**TOYOTA:** Camry [18>] (XV7), C-HR [17>] (NG/ZY)

**VOLKSWAGEN:** Arteon [17>] (3H7), Golf VI [09>13] (AJ5) Variant, Golf VI [11>15] (517) Cabriolet, Golf VII [12>] (5G1), Golf VII [14>] (BA5) Variant, Golf VII [15>] (AM1) Sportsvan, Jetta | BR, Lamando [15>], Passat B8 [14>] (3G2/CB2), Passat B8 [14>] (3G5/CB5) Variant, Polo [17>] (AW), Sharan [10>] (7N1/7N2), Tiguan [16>] (AD1/BW2), Touran [15>] (5T), T-Roc [17>] (A11).

#### ASSISTENZA PER IL MANTENIMENTO DI CORSIA

**ACURA:** CDX [16>], ILX [13>] (DE), MDX [14>] (YD), NSX [16>] (NC), RDX [19>] (TC), RLX [13>] (KC), TLX [14>] (UB), TLX-L [17>] (UB).

**AUDI:** A5 [07>16] (8T3) Coupé, A5 [09>16] (8F7) Cabrio, A5 [09>16] (8TA) Sportback.

Novità DASHBOARD

Copertura Marche

Link

**HONDA:** Accord IX [13>17] (CT/CR) Coupé, Accord IX [13>17] (CT/CR) Sedan, Accord IX [14>15] (CT/CR) Hybrid, Accord X [18>] (CV) Hybrid, Accord X [18>] (CV) Sedan, City VI [13>], Civic | BR, Civic IX [12>17] (FB/FG) Hatchback, Civic IX [12>17] (FB/FG) Hatchback Hybrid, Civic IX [14>18] (FB/FG) Wagon, Civic X [17>] (FC/FK) Coupé, Civic X [17>] (FC/FK) Hatchback, Civic X [17>] (FC/FK) Sedan, Crosstour [10>15], CR-V [12>18] (RM), CR-V [17>] (RW/RT), CR-V | BR, CR-Z [10>16] (ZF), Fit [14>] (GK), HR-V [15>] (RU), HR-V | BR, Insight [09>14] (ZE2), Jazz [15>] (GK), MDX [13>] (YD3), Mobilio [14>] (2NH), N-Box [12>16] (JF), NSX [16>] (NC), Fit | BR, Odyssey [08>13] (RB3/RB4), Odyssey [14>] (RC1/RC2), Odyssey [11>17] (RL5), Odyssey [18>] (RL6), Pilot [09>15] (YF), Pilot [16>] (YF), Ridgeline [06>15] (YK), Ridgeline [16>] (YK), Spirior [09>15], Vezel [13>] (RU).

**KIA:** Optima | BR, Optima III [11>15] (TF), Optima III [12>15] (TF) Hybrid, Sportage | BR.

**VOLKSWAGEN:** Passat CC [12>17] (358) Facelift.

#### AVVISO SUPERAMENTO CORSIA

**CITROËN:** C 5 [08>17] (X7), C 5 [08>17] (X7) Break, DS4 [11>15] (B75), DS4 [15>18] (B75).

**HYUNDAI:** Genesis [09>13] (BH).

**KIA:** K9/K900 [13>18] (KH).

**PEUGEOT:** 408 | BR.

#### CENTRALINA DI COMANDO SENSORI RADAR

**CADILLAC:** XT4 [19>], XT5 [17>].

**CHEVROLET:** Blazer [19>], Equinox [18>], Malibu [16>].

**OPEL:** Astra-K [15>], Astra-K [15>] Station Wagon.

**RENAULT:** Talisman [15>] (LP), Talisman [16>] (KP) Grandtour.

#### CENTRALINE RILEVAMENTO OSTACOLO LATO DESTRO E SINISTRO

**FORD:** Edge | BR, Edge II [18>] (CD539) Facelift, Expedition III [14>17] (U324) Facelift, Expedition III EL/MAX [14>17] (U354) Facelift, Expedition IV [17>] (U553), Expedition IV MAX [17>] (U553), Explorer V [10>15] (U502), Explorer V [15>19] (U502) Facelift, F150 [14>] (P552), Flex [13>] (D471) Facelift, Fusion [05>12] (CD338) Sedan, Fusion | BR, Mustang | BR, Mustang VI [15>] (S550) Cabrio, Mustang VI [15>] (S550) Coupé Taurus VI [12>19] Facelift.

**LAND ROVER:** Discovery Sport [20>] (L550), Range Rover Velar [17>] (L560).

**LINCOLN:** Continental [16>] (D544), MKC [14>] (C489), MKS [13>16] (D385) Facelift, MKT [13>] (D472) Facelift, MKX I [11>15] (U388) Facelift, MKX II [15>18] (U540), MKZ I [06>12] (CD378), MKZ II [12>16] (CD533), MKZ II [16>] (CD533) Facelift, Nautilus [18>] (U540), Navigator III [14>17] (U326) Facelift, Navigator III L [14>17] (U418) Facelift, Navigator IV [17>] (U554), Navigator IV L [17>] (U554).



ADAS

VEICOLI  
ELETTRICI / IBRIDI

TPMS

**MERCURY FORD:** Milan [06>11] (CD334).

**VOLVO:** S60 III [19>], S90 II [16>], V60 II [18>], V60 II [19>] Cross Country, V90 II [16>], V90 II [17>] Cross Country, XC40 [17>], XC60 II [17>], XC90 II [15>].

### MODULI PUNTO CIECO LATO DESTRO E SINISTRO

**GENESIS:** G70 [17>] (IK).

**HYUNDAI:** Ioniq [17>] (AE) EV, Ioniq [17>] (AE) Hybrid, Ioniq [17>] (AE) Plug-in Hybrid.

**KIA:** Carens IV [13>] (RP), Carnival III [15>] (YP), Niro [17>] (DE) Hybrid, Niro [18>] (DE) Plug-in Hybrid, Rondo [13>] (RP), Sedona III [15>] (YP), Soul [14>] (PS), Sportage I BR.

### SISTEMA DI PRE-CRASH 2

**TOYOTA:** Camry [18>] (XV7), C-HR [17>] (NG/ZY).

### SISTEMA DI SUPERVISIONE ASSISTENZA ALLA GUIDA

**RENAULT:** Captur II [20>], Clio V [19>] (XJA).

### TELECAMERA 360°

**BMW:** 3 [19>] (G20), 3 [19>] (G21) Touring, X4 I BR, X7 [19>] (G07).

**CADILLAC:** CT6 [16>], XT4 [19>], XT5 [17>], Blazer [19>], Equinox [18>], Equinox I BR

**CHEVROLET:** Malibu [16>]

**CITROËN:** C 5 Aircross [18>] (C84)

**DACIA:** Duster [18>] (HJ)

**DS:** DS7 Crossback [18>] (X74)

**GMC:** Terrain [18>], Yukon XL [14>]

**HOLDEN:** Acadia [19>], Equinox [18>]

**INFINITI:** Q60 [16>] (CV37) Coupe', QX50 [13>18] (J50), QX60 [14>] (L50)

**MAZDA:** CX-3 [17>] (DK) Facelift, CX-5 [17>] (KF), CX-8 [17>] (KG), CX-9 [17>] (TC), Mazda3 [13>18] (BY) Hybrid, Mazda3 [17>18] (BN), Mazda3 [17>18] (BN) Sedan, Mazda6 [16>] (GL), Mazda6 [16>] (GL) Station Wagon.

**MERCEDES-BENZ:** C [14>] (205), C [14>] (205) L, C [14>] (205) T, C [15>] (205) Coupé, S [15>] (222) Maybach

**NISSAN:** 370Z [09>] (Z34) Coupé, 370Z [10>] (Z34) Cabriolet, Altima [19>] (L34), Armada [04>16] (TA60), Armada [17>] (Y62), Maxima [09>14] (A35), Maxima [16>] (A36), Murano [08>14] (Z51), Pathfinder [13>] (R52), Titan [03>15] (A60), Titan [16>] (A61), Versa [12>] (N17), Versa I BR, Xterra [05>15] (N50).

**PEUGEOT:** 3008 [16>] (P84), 3008 [16>] (P84), 5008 [17>] (P87), 508 [18>] (R8), 508 [18>] (R8) Break.

**TOYOTA:** Supra [19>] (J29/DB).

**VOLVO:** S90 II [16>], V90 II [16>], V90 II [17>] Cross Country, VOLVO XC60 II [17>], XC60 II [17>], XC90 II [15>].

Novità DASHBOARD

Copertura Marche

Link

## VEICOLI ELETTRICI / IBRIDI

### CENTRALINA MOTORE ELETTRICO

**SEAT:** Mii [20>] (KF1) EV

**SKODA:** Citigo [20>] (NF1) EV

**TOYOTA:** C-HR [17>] (NG/ZY), RAV4 [19>] (A5), RAV4 | BR

**VOLKSWAGEN:** Up! [14>] (121) EV

### MODULO CONTROLLO BATTERIA

**SKODA:** Superb B8 [15>] (3V3), Superb B8 [15>] (3V5) Wagon.

**VOLKSWAGEN:** Passat B8 [14>] (3G2/CB2), Passat B8 [14>] (3G5/CB5) Variant

**VOLVO:** S60 III [19>]

### MODULO CONTROLLO SECONDA BATTERIA

**BMW:** X7 [19>] (G07).

### POWERTRAIN SYSTEM

INFINITI: Q30 [15>] (H15), QX30 [16>] (H15)

### REGOLAZIONE BATTERIA

**BMW:** X4 | BR

**CITROËN:** C 4 Cactus | BR, C 4 Lounge | BR, C 5 [08>17] (X7), C 5 [08>17] (X7) Break, C 5 Aircross [18>] (C84), DS4 [11>15] (B75), DS5 [11>15] (B81)

**DS:** DS3 [15>] (A55/A56), DS3 [15>] (A55/A56) Cabrio, DS3 Crossback [20>] (D34) EV, DS4 [15>18] (B75), DS5 [15>18] (B81), DS5 LS [14>] (B75C), DS7 Crossback [18>] (X74).

**SEAT:** Mii [12>] (KF1).

**TOYOTA:** Proace Verso [16>]

**VOLKSWAGEN:** Passat CC [12>17] (358) Facelift, Sharan [10>] (7N1/7N2), Up! [11>] (121/122).

### REGOLAZIONE BATTERIA (GATEWAY)

**AUDI:** A1 [11>18] (8X1/8XF), A1 [12>18] (8XA/8XK) Sportback, A5 [07>16] (8T3) Coupé, A5 [09>16] (8F7) Cabrio, A5 [09>16] (8TA) Sportback.

ADAS

VEICOLI  
ELETTRICI / IBRIDI

TPMS

## SISTEMA DI CARICA BATTERIE AD ALTO VOLTAGGIO

**SKODA:** Citigo [20>] (NF1) EV.

**VOLKSWAGEN:** Up! [14>] (121) EV.

## SISTEMA IBRIDO

**TOYOTA:** C-HR [17>] (NG/ZY), RAV4 [19>] (A5), RAV4 | BR.

## TRAZIONE ELETTRICA

**BENTLEY:** Bentayga [15>].

# TPMS

## PRESSIONE PNEUMATICI

**BUICK:** Cascada [16>], Enclave [18>], Encore [13>], Envision [16>], LaCrosse [10>16], LaCrosse [17>], Regal [18>], Verano [12>18].

**CADILLAC:** ATS [13>], ATS-V [16>], CT6 [16>], CTS [14>19], CTS-V [16>19], ELR [14>], Escalade [14>], Escalade ESV [14>], SRX [10>16], XT4 [19>], XT4 [19>], XT5 [17>], XT5 [17>], XTS [14>19].

**CHEVROLET:** Bolt EV [17>], Caprice [12>17], Captiva Sport [08>17], Colorado [12>], Equinox [10>17], Equinox [18>], Equinox [18>], Equinox | BR, Equinox | BR, Impala [14>], Malibu [16>], Spark [16>] (M400), Spark EV [14>16] (M300), Suburban [14>], Tahoe [15>], Traverse [18>], Volt [16>].

**DACIA:** Dokker [12>] (FE), Lodgy [12>].

**FIAT:** 500C [09>] (312)

**FORD:** EcoSport II [17>] (B515) Facelift, Edge II [18>] (CD539) Facelift, Fiesta VII [17>] (B479), Focus IV [18>] (C519), Ranger [15>] (P375) Facelift.

**GENESIS:** G80 [17>] (DH)

**GMC:** Acadia [17>], Terrain [10>17], Terrain [18>], Yukon [14>], Yukon XL [14>].

**HYUNDAI:** i30 [08>12] (FD), i30 [17>] (PD), i30 [17>] (PD) Kombi.

**LINCOLN:** MKT [13>] (D472) Facelift, Navigator IV L [17>] (U554).

**MITSUBISHI:** ASX [10>] (GA), Montero [06>] (V80/V90), Outlander Sport [11>] (GA), Pajero [06>] (V80/V90), RVR [10>] (GA), Shogun [06>] (V80/V90), Strada [15>] (KJ/KK/KL/KP), Triton [15>] (KJ/KK/KL/KP).

**NISSAN:** Altima [19>] (L34), Armada [17>] (Y62), Juke [10>] (F15), Kicks [16>] (P15), Kicks | BR, Maxima [09>14] (A35), Maxima [16>] (A36), Versa [12>] (N17), Versa | BR.

Novità DASHBOARD

Copertura Marche

Link

**OPEL:** Astra-K [15>], Astra-K [15>] Station Wagon.

**PEUGEOT:** 408 | BR.

**RENAULT:** Grand Scenic II [03>09] (JM), Megane III [09>15] (X95/BZ) Hatchback, Megane III [09>15] (X95/KZ) Grandtour, Megane III [10>15] (X95/EZ) C-C, Talisman [15>] (LP), Talisman [16>] (KP) Grandtour.

**SATURN:** Astra [08>09].

Mercato  
EUROPA

Mercato  
NORD AMERICA

Mercato  
BRASILE

Mercato  
INDIA

# Novità FUNZIONI SPECIALI

## Mercato EUROPA

### ASSISTENZA AL PARCHEGGIO

**KIA:** Sorento III [15>] (UM).

**RENAULT:** Captur II [20>], Clio V [19>] (XJA), Zoe II [19>].

### ASSISTENZA ALLA GUIDA

**PORSCHE:** Panamera [17>] (971).

**ACURA:** CDX [16>], ILX [13>] (DE), MDX [14>] (YD), NSX [16>] (NC), RDX [19>] (TC), RLX [13>] (KC), TLX [14>] (UB), TLX-L [17>] (UB).

**DACIA:** Duster [18>] (HJ), Logan [12>] (L8), Logan [13>] (K8) MCV, Sandero [13>] (B8).

**DAIHATSU:** Cast [15>], Mira e:S [11>17], Mira e:S [17>], Mira Tocot [18>], Move [10>14], Move [14>], Move Conte [08>], Tanto [07>13], Tanto [13>19], Tanto [19>], Wake [14>].

**FORD:** Expedition III [14>17] (U324) Facelift, Expedition III EL/MAX [14>17] (U354) Facelift, Expedition IV [17>] (U553), Expedition IV MAX [17>] (U553), Explorer V [10>15] (U502), Explorer V [15>19] (U502) Facelift, F150 [14>] (P552), Flex [13>] (D471) Facelift, Fusion [05>12] (CD338) Sedan, Mustang VI [15>] (S550) Cabrio, Mustang VI [15>] (S550) Coupé, Taurus VI [12>19] Facelift.

**HONDA:** Accord IX [13>17] (CT/CR) Coupé, Accord IX [13>17] (CT/CR) Sedan, Accord IX [14>15] (CT/CR) Hybrid, Accord X [18>] (CV) Hybrid, Accord X [18>] (CV) Sedan, City VI [13>], Civic IX [12>17] (FB/FG) Hatchback, Civic IX [12>17] (FB/FG) Hatchback Hybrid, Civic IX [14>18] (FB/FG) Wagon, Civic X [17>] (FC/FK) Coupé, Civic X [17>] (FC/FK) Hatchback, Civic X [17>] (FC/FK) Sedan, Crosstour [10>15], CR-V [12>18] (RM), CR-V [17>] (RW/RT), CR-Z [10>16] (ZF), Fit [14>] (GK), HR-V [15>] (RU), Insight [09>14] (ZE2), Jazz [15>] (GK), MDX [13>] (YD3), Mobilio [14>] (2NH), N-Box [12>16] (JF), NSX [16>] (NC), Odyssey [08>13] (RB3/RB4), Odyssey [14>] (RC1/RC2), Odyssey [11>17] (RL5), Odyssey [18>] (RL6), Pilot [09>15] (YF), Pilot [16>] (YF), Ridgeline [06>15] (YK), Ridgeline [16>] (YK), Spiorio [09>15], Vezel [13>] (RU).

**KIA:** Cee'd [15>18] (JD) Facelift, Cee'd [15>18] (JD) Sportswagon Facelift, Pro Cee'd [15>18] (JD) Facelift.

**LAND ROVER:** Defender 90, Defender 110 (L316), Defender 130 (L316), Defender 90 (L316).

**LINCOLN:** Continental [16>] (D544), MKC [14>] (C489), MKS [13>16] (D385) Facelift, MKT [13>] (D472) Facelift, MKX I [11>15] (U388) Facelift, MKX II [15>18] (U540), MKZ I [06>12] (CD378), MKZ II [12>16] (CD533), MKZ II [16>] (CD533) Facelift, Nautilus [18>] (U540), Navigator III [14>17] (U326) Facelift, Navigator III L [14>17] (U418) Facelift, Navigator IV [17>] (U554), Navigator IV L [17>] (U554).

Novità DASHBOARD

Copertura Marche

Link

**MASERATI:** Ghibli, Levante, Quattroporte.

**MAZDA:** CX-3 [17>] (DK) Facelift, CX-5 [17>] (KF), CX-8 [17>] (KG), CX-9 [17>] (TC), Mazda3 [13>18] (BY) Hybrid, Mazda3 [17>18] (BN), Mazda3 [17>18] (BN) Sedan, Mazda6 [16>] (GL), Mazda6 [16>] (GL) Station Wagon.

**MERCURY FORD:** Milan [06>11] (CD334).

**RENAULT:** Captur I [13>19] (X87/J5), Captur II [20>], Clio V [19>] (XJA), Kaptur [16>], Twingo III [14>] (X07/BC), Zoe II [19>].

**SUBARU:** Ascent [18>] (WM), Forester [19>] (SK), Impreza [17>] (GK), Impreza [17>] (GT) Hatchback, Legacy [15>] (BN), Liberty [15>] (BN), Outback [15>] (BS), Pleo Plus [11>17], Pleo Plus [17>], Stella [10>14], Stella [14>], XV Crosstrek [17>] (GK).

**TOYOTA:** Pixis Epoch [11>17], Pixis Epoch [17>], Pixis Joy [16>], Pixis Mega [15>], Pixis Space [11>17].

## CALIBRAZIONE TELECAMERA/RADAR

**PORSCHE:** Panamera [17>] (971).

**DACIA:** Duster [18>] (HJ), Lodgy [12>] (JS).

**DAIHATSU:** Cast [15>], Mira e:S [11>17], Mira e:S [17>], Mira Tocot [18>], Move [10>14], Move [14>], Move Conte [08>], Tanto [07>13], Tanto [13>19], Tanto [19>], Wake [14>].

**FIAT:** 500X [15>] (334).

**JEEP:** Renegade [14>] (BU).

**KIA:** Cee'd [15>18] (JD) Sportswagon Facelift, Pro Cee'd [15>18] (JD) Facelift.

**MAZDA:** CX-3 [17>] (DK) Facelift, CX-5 [17>] (KF), CX-8 [17>] (KG), CX-9 [17>] (TC), Mazda3 [13>18] (BY) Hybrid, Mazda3 [17>18] (BN), Mazda3 [17>18] (BN) Sedan, Mazda6 [16>] (GL), Mazda6 [16>] (GL) Station Wagon.

**RENAULT:** RENAULT: Captur I [13>19] (X87/J5), Captur II [20>], Clio V [19>] (XJA), Kaptur [16>], Twingo III [14>] (X07/BC), Zoe II [19>].

**SUBARU:** Pleo Plus [11>17], Pleo Plus [17>], Stella [10>14], Stella [14>], XV Crosstrek [17>] (GK).

## CAMBIO LINGUA

**CHEVROLET:** Corvette C6 [04>13] Convertible, Corvette C6 [04>13] Coupé, Avalanche [07>13], Silverado 1500 [07>13], Silverado 2500 [07>13], Suburban [07>13], Tahoe [07>14].

**RENAULT:** Captur II [20>], Clio V [19>] (XJA),

## CODIFICA CHIAVI

**CITROËN:** Jumper [06>15] (U9), Jumper [15>19] (U9), Relay (UK).

**FERRARI:** 612 Scaglietti [04>07] (F137), 612 Scaglietti [07>11] (F137 MY).

**MASERATI:** Quattroporte [04>07] (M139), Quattroporte [07>12] (M139 EV07).

Mercato  
EUROPA

Mercato  
NORD AMERICA

Mercato  
BRASILE

Mercato  
INDIA

**PEUGEOT:** Boxer [06>15] (U9), Boxer [15>19] (U9).

**SSANGYONG:** Actyon [05>12] (C100), Actyon [12>17] Sports II (Q150), Korando [12>] Sports (Q150), Kyron [05>14] (D100), Rexton (W) [13>17] (Y290), Rodius [13>] (A149), Stavic [13>] (A150)

## FAST FIT

**CHEVROLET:** Corvette, Corvette C6 [04>13] Convertible, Corvette C6 [04>13] Coupé.

**PORSCHE:** 911, 911 [93>00] (993), 918, 918 Spyder [13>15], Boxster, Cayenne, Cayenne [07>10] (9PA/957), Cayenne [10>17] (92A/958), Cayman, Macan, Macan [14>] (95B), Panamera [09>16] (970).

**ALFA ROMEO:** Mito [08>18] (955).

**AUDI:** A1 [11>18] (8X1/8XF), A1 [12>18] (8XA/8XK) Sportback, A1 [19>] (GBA) Sportback, A3, A4 [15>] (8W2), A4 [15>] (8W5) Avant, A4 [16>] (8WH) Avant Allroad, A5 [16>] (F53) Coupé, A5 [16>] (F57) Cabrio, A5 [16>] (F5A) Sportback, A6 [18>] (4K2), A6 [18>] (4K5) Avant, A7 [18>] (4KA) Sportback, A8 [18>] (4N2), A8 [18>] (4N8) L, E-Tron [19>] (GE), Q5 [17>] (FY), Q7 [15>] (4MB), Q8 [18>] (4MN), RS3, RS4 [17>] (8W5) Avant, RS5 [17>] (F53) Coupé, S3, S4 [16>] (8W2), S4 [16>] (8W5) Avant, S5 [16>] (F53) Coupé, S5 [16>] (F57) Cabrio, S5 [16>] (F5A) Sportback, S6 [19>] (4K2), S6 [19>] (4K5) Avant, S7 [19>] (4KA) Sportback, SQ5 [17>] (FY), SQ7 [16>] (4MB).

**CHEVROLET:** Silverado, Silverado [02>04], Silverado [05>13], Silverado [14>], Avalanche [07>13], Silverado, Silverado 1500 [07>13], Silverado 2500 [99>07], Silverado 2500 [07>13], Silverado 2500 [14>19], Suburban [07>13], Tahoe [07>14].

**CHRYSLER:** 200, 300M [98>04] (LH), Cirrus [98>00] (JA/J2), Concorde [98>04] (LH), Grand Voyager [01>07] (RG/RS), LHS [98>04] (LH), Neon [94>05] (PL), PT Cruiser [00>10], PT Cruiser [01>10] Cabrio, Sebring [95>00] (JX) Cabrio, Stratus [95>01] (JA), Town and Country [00>07] (RS), Voyager [84>01] (AS/ES/NS/GS), Voyager [01>07] (RG/RS).

**CITROËN:** Jumpy, Jumpy [07>16] (G9), Berlingo (M59), Berlingo [08>14] (B9) Van, Berlingo [08>18] (B9), Berlingo [14>18] (B9) Van, Berlingo Entreprise, C 3 [09>16] (A51), C 3 Picasso [09>17] (A58), C 4 Grand Picasso [06>13] (B58), C 4 Picasso [06>13] (B58), Dispatch, Dispatch (UK), DS3 [10>15] (A55/A56), DS3 [13>15] (A55/A56) Cabrio, Jumper, Jumper (23), Jumper [06>15] (U9), Jumper [15>19] (U9), Jumpy, Jumpy [>07], Jumpy 3 [07>16] (G9), Nemo, Nemo Multispace [08>] (A9), Relay, Relay (UK).

**DACIA:** Dokker [12>], Dokker [12>] (FE), Duster [18>] (HJ), Lodgy [12>] (JS).

**DODGE:** Caravan [96>00] (NS), Dakota [97>04] (AN), Dart, Durango [97>04] (DN), Grand Caravan [01>07] (RS/RG), Intrepid [98>04] (LH), RAM 1500 [94>01] (BR/BE), RAM 1500 [02>09] (DR), RAM 1500/2500/3500, RAM 2500 [94>01] (BR/BE), RAM 2500 [03>09] (DR), RAM 3500 [94>01] (BR/BE), Stratus [95>00] (JA/J2).

**FERRARI:** 458, 488, FF, GTC4Lusso, LaFerrari.

**FIAT:** 500 [07>] (312), 500C [09>] (312), 500L [12>] (330), 500L [13>] (334) Living, Doblò, Doblò [06>09] (119), Doblò [15>] (152) Facelift, Doblò Cargo (223) [00>05], Doblò Cargo (223) [06>09], Doblò Cargo (263) [10>15],

Novità DASHBOARD

Copertura Marche

Link

Ducato, Ducato (X230) [>02], Ducato (X244) [02>06], Ducato (X250) [06>] Minibus, Ducato (X250) [06>11], Ducato (X250) FL [11>14], Ducato (X290) FL [14>], Fiorino, Fiorino 08 (225), Panda [12>] (319), Panda [14>] (319) Cross, Punto [12>18] (199), Scudo, Scudo (222), Scudo [07>] (272).

**FORD:** Ranger, Ranger [12>14], C-Max, Crown, Edge II [14>18] (CD539), Edge II [18>] (CD539) Facelift, Escape, Escape III [12>17] (C520), Escape III [17>19] (C520) Facelift, Expedition, Expedition III [14>17] (U324) Facelift, Expedition III EL/MAX [14>17] (U354) Facelift, Expedition IV [17>] (U553), Expedition IV MAX [17>] (U553), Explorer, Explorer V [10>15] (U502), Explorer V [15>19] (U502) Facelift, F150, F150 [14>] (P552), Flex [08>12] (D471), Flex [13>] (D471) Facelift, Focus, Fusion, Fusion [13>] (CD391) Sedan, Galaxy III [15>] (CD390), Kuga II [13>17] (C520), Kuga II [17>19] (C520) Facelift, Maverick, Mondeo V [15>] (CD391), Mondeo V [15>] (CD391) Turnier, Mustang, Mustang VI [15>] (S550) Cabrio, Mustang VI [15>] (S550) Coupé, Ranger [12>14] (P375), S-Max II [15>] (CD539), Taurus VI [09>12], Taurus VI [12>19] Facelift, Tourneo, Tourneo Connect [13>] (V408), Tourneo Custom [13>] (V362), Transit, Transit 2006, Transit 2012, Transit 2014, Transit Argentina [07>13], Transit Argentina [14>], Transit Connect, Transit Connect 2014, Transit Custom 2013, Transit Latin America [14>].

**GMC:** Sierra, Sierra (Light Truck) [02>04], Sierra (Light Truck) [05>13], Sierra (Light Truck) [14>], Sierra, Sierra 2500 [99>07], Sierra 2500 [07>13], Sierra 2500 [14>19].

**HYUNDAI:** Azera, Centennial, Coupé, Grandeur, H1 Truck, H100 Truck, H350, HR Series, Ioniq, Kona [18>] (OS) EV, Santa, Sonata.

**INFINITI:** Q30, QX30.

**IVECO:** Daily, Daily 00, Daily 06, Daily 09, Daily 12, Daily 14, Daily 16, Massif.

**JAGUAR:** F-Pace, F-Pace [18>] (X761), F-Type [13>] (X152) Cabrio, F-Type [13>] (X152) Coupé, I-Pace, I-Pace [18>] (X590), S-Type, S-Type [98>08] (X200), XE, XE [18>] (X760) Sedan, XF, XF [08>15] (X250) Sedan, XF [09>15] (X250) Sedan R, XF [13>15] (X250) Sedan R-S, XF [13>15] (X250) Sportbrake R-S, XF [18>] (X260) Sedan, XF [18>] (X260) Sedan S, XF [18>] (X260) Sportbrake, XF [18>] (X260) Sportbrake S, XJ, XJ [10>] (X351) Sedan, XJ [13>] (X351) Sedan R, XK [06>14] (X150) Cabrio, XK [06>14] (X150) Cabrio R, XK [06>14] (X150) Coupé, XK [06>14] (X150) Coupé R.

**JEEP:** Cherokee, Cherokee [88>01] (XJ), Cherokee [01>07] (KJ), Grand Cherokee [98>04] (WJ), Grand Cherokee [00>04] (WG), Liberty [00>07] (KJ), Wrangler [97>06] (TJ).

**KIA:** K-Series, Niro, Niro [19>] (DE) EV, Opirus, Sorento.

**LANCIA:** Ypsilon [11>].

**LAND ROVER:** Defender 110, Defender 130, Defender 90, Discovery IV [09>16] (L319), Discovery Sport [20>] (L550), Discovery V [17>] (L462), Range Rover Evoque [19>] (L551), Range Rover III [09>12] (L322) Facelift, Range Rover IV [13>16] (L405), Range Rover IV [17>] (L405), Range Rover Sport I [09>13] (L320) Facelift, Range Rover Sport II [14>16] (L494), Range Rover Sport II [17>] (L494), Range Rover Velar [17>] (L560).

**LINCOLN:** Continental [16>] (D544), Mark, MKC [14>] (C489), MKS [08>12] (D385), MKS [13>16] (D385) Facelift,



Mercato  
EUROPA

Mercato  
NORD AMERICA

Mercato  
BRASILE

Mercato  
INDIA

MKT [09>12] (D472), MKT [13>] (D472) Facelift, MKX II [15>18] (U540), MKZ, MKZ II [12>16] (CD533), MKZ II [16>] (CD533) Facelift, Nautilus [18>] (U540), Navigator, Navigator III [14>17] (U326) Facelift, Navigator III L [14>17] (U418) Facelift, Navigator IV [17>] (U554), Navigator IV L [17>] (U554), Town, Zephyr.

**MASERATI:** Coupé, Ghibli [13>] (M157), Ghibli Diesel [13>] (M157), Ghibli S [13>] (M157), Ghibli S Q4 [13>] (M157), GranTurismo, Levante, Levante [16>] (M161), Levante Diesel [16>] (M161), Levante GTS [18>] (M161), Levante S [16>] (M161), Levante Trofeo [18>] (M161), Quattroporte, Quattroporte [13>] (M156), Quattroporte Diesel [13>] (M156), Quattroporte GTS [13>] (M156), Quattroporte S [13>] (M156), Quattroporte S Q4 [13>] (M156), Spyder.

**MAZDA:** BT-50, BT-50 [11>15], BT-50, BT-50 [11>15] (UP), Tribute.

**MINI:** Mini (R50) [01>06] Cooper, Mini (R50) [01>06] One, Mini (R50) [01>06] One Deluxe, Mini (R52) [04>09] Cabrio Cooper, Mini (R52) [04>09] Cabrio Cooper S, Mini (R52) [04>09] Cabrio John Cooper Works, Mini (R52) [04>09] Cabrio One, Mini (R53) [02>06] Cooper S, Mini (R53) [03>06] John Cooper Works.

**MITSUBISHI:** L 200 [15>] (KJ/KK/KL/KP).

**NISSAN:** Interstar, NV, NV 300, NV 400 [10>14], NV 400 [14>], Primastar.

**OPEL:** Combo, Combo D [12>17], Combo-C, Combo-C [01>11], Combo-D, Combo-D Tour [12>17], Movano, Movano A, Movano B [10>14], Movano B [14>], Vivaro-A, Vivaro-B.

**PEUGEOT:** 207 [06>12] (A7/T3), 207 [07>12] (A7/T3) Station Wagon, 207 [07>15] (A7) CC, 207 [13>15] Plus, 3008 [09>16] (T84), 308 [07>13] (T7), 308 [08>13] (T7) Station Wagon, 308 [09>13] (T7) CC, 408 [10>14] (T73), 5008 [09>17] (T87), Bipper, Bipper Tepee [08>] (A9), Boxer, Boxer (U3), Boxer [06>15] (U9), Boxer [15>19] (U9), Expert, Expert [07>], Expert [07>16] (G9), Partner (M4), Partner (M5), Partner [08>14] (B9), Partner [14>18] (B9), Partner Tepee [08>18] (B9), Ranch.

**PLYMOUTH:** Breeze [98>01] (JA), Prowler [98>02] (PR).

**PORSCHE:** Cayenne, Cayenne [07>10] (9PA/957), Cayenne [10>17] (92A/958).

**RENAULT:** Captur, Captur I [13>19] (X87/J5), Captur II [20>], Clio, Clio V [19>] (XJA), Grand Scenic IV [17>] (R9), Kadjar [15>] (XFE), Kangoo, Kangoo II [08>12], Kangoo II [13>], Mascott DXI Euro 4/5, Master, Master 3 [10>14], Master 3 [14>19], Master Facelift, Megane IV [16>] (B9A) Hatchback, Megane IV [16>] (B9A) Sedan, Megane IV [16>] (K9A) Grandtour, Scenic IV [16>] (J9), Talisman [15>] (LP), Talisman [16>] (KP) Grandtour, Trafic I, Trafic II, Trafic III, Zoe, Zoe II [19>].

**SEAT:** Altea, Ateca [16>] (KH), Leon, Leon [12>] (5F1), Leon [14>] (5F8) ST, Tarraco [19>] (KN).

**SKODA:** Octavia, Superb.

**SSANGYONG:** Korando, Musso, Rexton, Rodius, Stavic.

**SUBARU:** Ascent, Ascent [18>] (WM), Forester, Forester [13>18] (SJ), Forester [19>] (SK), Impreza, Impreza [11>16] (GJ), Impreza [11>16] (GP) Hatchback, Impreza [17>] (GK), Impreza [17>] (GT) Hatchback, Legacy, Legacy [09>14] (BM), Legacy [09>14] (BR) Kombi, Legacy [15>] (BN), Levorg, Levorg [14>] (VM/V10), Liberty, Liberty [09>14] (BM), Liberty [09>14] (BR) Kombi, Liberty [15>] (BN), Outback, Outback [09>14] (BR), Outback

Novità DASHBOARD

Copertura Marche

Link

[15>] (BS), WRX, WRX [14>] (VA), XV, XV Crosstrek [12>16] (GP), XV Crosstrek [17>] (GK).

**SUZUKI:** Jimny, Spacia.

**VOLKSWAGEN:** Caddy, Caddy [10>15] (2C), Caddy [16>] (SA), Beetle, Caddy, Caddy [10>15] (2C), Caddy [15>] (SA), California, Caravelle, Crafter, Crafter [06>16] (2E-2F), Golf, Jetta, Multivan, Scirocco, Touran, Transporter.

## GOMMISTI

**CHEVROLET:** Corvette C6 [04>13] Convertible, Corvette C6 [04>13] Coupé.

**PORSCHE:** 911 [12>19] (991), 918 Spyder [13>15], Boxster [12>16] (981), Cayenne [10>17] (92A/958), Cayman [13>16] (981), Macan [14>] (95B).

**ACURA:** CDX, ILX, MDX, NSX, RDX, RLX, TLX, TLX-L.

**AUDI:** A3 [03>13] (8P1), A3 [03>13] (8PA) Sportback, A3 [08>14] (8P7) Cabrio, RS3 [11>14] (8PA) Sportback, S3 [06>13] (8P1), S3 [06>13] (8PA) Sportback.

**CHEVROLET:** Silverado [05>13], Silverado [14>], Silverado 1500 [14>19], Silverado 2500 [14>19].

**FERRARI:** 458 [09>14] (F142) Italia, 458 [11>14] (F142) Spider, 458 [13>15] (F142) Speciale, 458 [13>15] (F142) Speciale A, 488 [15>] (F142M) GTB, 488 [15>] (F142M) Spider, FF [11>15] (F151), GTC4Lusso [16>] (F151M), GTC4Lusso T [17>] (F151G), LaFerrari [13>] (F150), LaFerrari Aperta [16>] (F150).

**FIAT:** Doblò, Doblò Cargo (263) [10>15], Ducato, Ducato (X244) [02>06], Ducato (X250) [06>] Minibus, Ducato (X250) [06>11], Ducato (X250) FL [11>14], Ducato (X290) FL [14>], Scudo [07>] (272).

**FORD:** E Series / E Series Super Duty, Ranger [12>14], C-Max [12>18] (C344) Hybrid, Crown Victoria [98>12] (EN114), Escape I [01>07] (U204), Escape II [07>12] (U377), Escape III [12>17] (C520), Escape III [17>19] (C520) Facelift, Expedition II [03>06] (U222), Expedition III [06>14] (U324), Expedition III EL/MAX [06>14] (U354), Explorer III [01>05] (U152), Explorer IV [05>10] (U251), Explorer Sport Trac [06>10] (U251), F150 [03>08] (P221), Focus III [11>14] (C346) EV, Fusion [05>12] (CD338) Sedan, Maverick [00>07] (U204), Mustang V [10>14] (S197) Facelift Cabrio, Mustang V [10>14] (S197) Facelift Coupé, Mustang VI [15>] (S550) Cabrio, Mustang VI [15>] (S550) Coupé, Tourneo Connect [13>] (V408), Transit 2006, Transit 2012, Transit Argentina [07>13], Transit Connect, Transit Connect 2014.

**GMC:** Sierra (Light Truck) [05>13], Sierra (Light Truck) [14>], Sierra 1500 [07>13], Sierra 1500 [14>19], Sierra 2500 [07>13], Sierra 2500 [14>19].

**HONDA:** Accord, City, Civic, Crosstour, CR-V, CR-Z, Fit, HR-V, Insight, Jazz, MDX, Mobilio, N-Box, NSX, Odyssey, Pilot, Ridgeline, Spiorior, Vezel.

**HYUNDAI:** Azera [06>11] (TG), Centennial [00>06] (LZ), Coupé [01>09] (GK), Grandeur [99>05] (XG), Grandeur [05>11] (TG), H350, Ioniq [17>] (AE) EV, Ioniq [17>] (AE) Hybrid, Ioniq [17>] (AE) Plug-in Hybrid, Santa Fe [06>12] (CM), Sonata IV [98>05] (EF).

**INFINITI:** Q30 [15>] (H15), QX30 [16>] (H15).

Mercato  
EUROPA

Mercato  
NORD AMERICA

Mercato  
BRASILE

Mercato  
INDIA

**IVECO:** Daily 00, Daily 06, Daily 09, Daily 12, Daily 14, Daily 16.

**JAGUAR:** F-Pace [18>] (X761), I-Pace [18>] (X590), S-Type [98>08] (X200), XE [18>] (X760) Sedan, XF [18>] (X260) Sedan, XF [18>] (X260) Sedan S, XF [18>] (X260) Sportbrake, XF [18>] (X260) Sportbrake S, XJ [03>10] (X350/X358) Sedan, XJ [03>10] (X350/X358) Sedan R.

**JEEP:** Cherokee [14>] (KL).

**KIA:** Niro [17>] (DE) Hybrid, Niro [18>] (DE) Plug-in Hybrid, Opirus [03>10] (LD/GH), Sorento III [15>] (UM).

**LAND ROVER:** Discovery Sport [20>] (L550), Discovery V [17>] (L462), Range Rover Evoque [19>] (L551), Range Rover IV [17>] (L405), Range Rover Sport II [17>] (L494), Range Rover Velar [17>] (L560).

**LINCOLN:** Mark LT I [05>08] (P397), MKZ I [06>12] (CD378), Navigator II [03>06] (U228), Navigator III [06>14] (U326), Navigator III L [06>14] (U418), Town Car [98>11] (FN145), Zephyr [06>06] (CD378).

**MASERATI:** Coupé [01>07] (M138), Coupé GranSport [05>07] (M138), GranTurismo [07>] (M145), GranTurismo [10>] (M145) Convertible, Levante [16>] (M161), Levante Diesel [16>] (M161), Levante GTS [18>] (M161), Levante S [16>] (M161), Levante Trofeo [18>] (M161), Quattroporte [07>12] (M139 EV07), Spyder [01>07] (M138), Spyder GranSport [05>07] (M138).

**MAZDA:** BT-50 [11>15], BT-50 [11>15] (UP), Tribute [00>07] (U204), Tribute [08>11] (U377).

**MERCEDES-BENZ:** A [18>] (177), A [18>] (177) L Sedan, A [18>] (177) Sedan, B [19>] (247), C [14>] (205), C [14>] (205) L, C [14>] (205) T, C [15>] (205) Coupé, C [16>] (205) Cabrio, Citan, Citan [13>] (415), CLA [19>] (118), CLA [19>] (118) Shooting Brake, E [16>] (213), E [16>] (213) L, E [16>] (213) T, E [17>] (238) Cabrio, E [17>] (238) Coupé, G [18>] (463) T L, GLB [19>] (247), GLC [15>] (253), GLC [16>] (253) Coupé, GLC [18>] (253) L, GLE [19>] (167), GLE [20>] (167) Coupé, GLS [19>] (167), GLS [20>] (167) Maybach, Metris [14>] (447), Sprinter I-II (901-905), Sprinter III (906), Sprinter III (906) M.Y. 2013, V / Viano [03>14] (639), V [14>] (447), Viano (639) VAN, Vito (638) VAN, Vito (639) VAN, Vito [03>14] (639), Vito [14>] (447) Tourer, Vito [14>] (447) VAN, V-Klasse [14>] (447).

**MERCURY FORD:** Grand Marquis IV [03>11] (EN114), Mariner [04>07] (U364), Mariner [08>11] (U377), Milan [06>11] (CD334), Mountaineer II [01>05] (U152), Mountaineer III [06>10] (U251).

**NISSAN:** Interstar, NV 300, NV 400 [10>14], NV 400 [14>].

**OPEL:** Combo, Combo D [12>17], Combo-C [01>11], Combo-D, Combo-D Tour [12>17], Movano A, Movano B [10>14], Movano B [14>], Vivaro-B.

**PEUGEOT:** Boxer, Boxer (U5), Boxer [06>15] (U9), Boxer [15>19] (U9), Expert [07>16] (G9).

**PORSCHE:** Cayenne [10>17] (92A/958).

**RENAULT:** Captur, Captur II [20>], Clio, Clio V [19>] (XJA), Kangoo II [13>], Master, Master 3 [10>14], Master 3 [14>19], Master Facelift, Trafic III, Zoe II [19>].

**SEAT:** Altea [04>15] (5P1), Altea Freetrack [07>15] (5P8), Altea XL [06>15] (5P5), Leon [05>12] (1P1).

**SKODA:** Octavia [04>13] (1Z3), Octavia [04>13] (1Z5) Kombi, Superb B6 [08>15] (3T4), Superb B6 [09>15] (3T5) Kombi, Yeti [09>17] (5L7).

Novità DASHBOARD

Copertura Marche

Link

**SSANGYONG:** Korando [11>19] (C200), Musso [18>] (Q200), Rexton (W) [13>17] (Y290), Rodius [13>] (A149), Stavic [13>] (A150).

**SUBARU:** Ascent, Ascent [18>] (WM), Forester, Forester [13>18] (SJ), Forester [19>] (SK), Impreza, Impreza [17>] (GK), Impreza [17>] (GT) Hatchback, Legacy [15>] (BN), Levorg, Levorg [14>] (VM/V10), Liberty [15>] (BN), Outback [15>] (BS), WRX, WRX [14>] (VA), XV, XV Crosstrek [17>] (GK).

**SUZUKI:** Jimny [18>] (A6G), Spacia [17>].

**VOLKSWAGEN:** Caddy [04>10] (2K), Caddy [10>15] (2C), Caddy [82>92] (14-1A), Caddy [95>09] (9K9), Beetle (Maggiolino) [11>] (5C1/5C2), Beetle (Maggiolino) [13>] (5C7/5C8) Cabriolet, Caddy [04>10] (2K), Caddy [10>15] (2C), California T4 [90>03], California T5 [03>09] (7H), California T5 [09>15] (7E), Caravelle T4 [90>03] (70-7D), Caravelle T5 [03>09] (7H), Caravelle T5 [09>15] (7E), Crafter [06>16] (2E-2F), Golf VI [08>13] (5K1), Golf VI [09>13] (AJ5) Variant, Golf VI [09>14] (521) Plus, Golf VI [11>15] (517) Cabriolet, Jetta [10>14] (AJ) SportWagen, Jetta [10>18] (162), LT, Multivan T4 [90>03] (70-7D), Multivan T5 [03>09] (7H), Multivan T5 [09>15] (7E), Scirocco [08>17] (137/138), Taro, Touran [06>10] (1T2) Facelift, Touran [10>15] (1T3) Facelift, Transporter T4 [90>00] (70-7D), Transporter T5 [03>09] (7H-7J), Transporter T5 [09>15] (7E-7F), Van.

## PROGRAMMAZIONE MODALITÀ TRASPORTO

**PORSCHE:** Panamera [09>16] (970).

**BMW:** 5 [95>04] (E39), 5 [95>04] (E39) Touring, 7 [92>02] (E38).

**FERRARI:** 458 [09>14] (F142) Italia, 458 [11>14] (F142) Spider, California [09>12] (F149), California 30 [12>14] (F149), FF [11>15] (F151).

**MASERATI:** Ghibli [13>] (M157), Ghibli Diesel [13>] (M157), Ghibli S [13>] (M157), Ghibli S Q4 [13>] (M157), Levante, Levante [16>] (M161), Levante Diesel [16>] (M161), Levante GTS [18>] (M161), Levante S [16>] (M161), Levante Trofeo [18>] (M161), Quattroporte [13>] (M156), Quattroporte Diesel [13>] (M156), Quattroporte GTS [13>] (M156), Quattroporte S [13>] (M156), Quattroporte S Q4 [13>] (M156).

## RIGENERAZIONE FILTRO PARTICOLATO

**AUDI:** A1[11>18] (8X1/8XF).

**DACIA:** Dokker [12>], Dokker [12>] (FE), Duster [18>] (HJ), Lodgy [12>] (JS).

**FIAT:** 500C [09>] (312), 500L [12>] (330), Panda [12>] (319), Punto [12>18] (199).

**FORD:** Ranger [12>14], Edge II [14>18] (CD539), Edge II [18>] (CD539) Facelift, Escape III [12>17] (C520), Escape III [17>19] (C520) Facelift, Expedition, Expedition III [14>17] (U324) Facelift, Expedition III EL/MAX [14>17] (U354) Facelift, Expedition IV [17>] (U553), Expedition IV MAX [17>] (U553), Explorer V [10>15] (U502), Explorer V [15>19] (U502) Facelift, F150, F150 [14>] (P552), Flex [08>12] (D471), Flex [13>] (D471) Facelift, Focus, Fusion, Fusion [13>] (CD391) Sedan, Galaxy III [15>] (CD390), Kuga II [13>17] (C520), Kuga II [17>19] (C520) Facelift,

Mercato  
EUROPA

Mercato  
NORD AMERICA

Mercato  
BRASILE

Mercato  
INDIA

Maverick, Mondeo V [15>] (CD391), Mondeo V [15>] (CD391) Turnier, Mustang VI [15>] (S550) Cabrio, Mustang VI [15>] (S550) Coupé, Ranger [12>14] (P375), S-Max II [15>] (CD539), Taurus VI [09>12], Taurus VI [12>19] Facelift, Tourneo, Tourneo Connect [13>] (V408), Tourneo Custom [13>] (V362), Transit 2006, Transit 2012, Transit 2014, Transit Argentina [07>13], Transit Argentina [14>], Transit Connect, Transit Connect 2014, Transit Custom 2013, Transit Latin America [14>].

**LINCOLN:** Continental [16>] (D544), MKC [14>] (C489), MKS [13>16] (D385) Facelift, MKT [13>] (D472) Facelift, MKX I [11>15] (U388) Facelift, MKX II [15>18] (U540), MKZ I [06>12] (CD378), MKZ II [12>16] (CD533), MKZ II [16>] (CD533) Facelift, Nautilus [18>] (U540).

**MAZDA:** BT-50 [11>15] (UP).

**MERCEDES-BENZ:** A [18>] (177), A [18>] (177) L Sedan, A [18>] (177) Sedan, B [19>] (247), C [14>] (205), C [14>] (205) L, C [14>] (205) T, C [15>] (205) Coupé, C [16>] (205) Cabrio, CLA [19>] (118), CLA [19>] (118) Shooting Brake, E [16>] (213), E [16>] (213) L, E [16>] (213) T, E [17>] (238) Cabrio, E [17>] (238) Coupé, G [18>] (463) T L.

**SEAT:** Altea [04>15] (5P1), Ateca [16>] (KH), Leon [12>] (5F1), Leon [14>] (5F8) ST, Tarraco [19>] (KN).

**SUBARU:** Ascent [18>] (WM), Forester [19>] (SK), Impreza [17>] (GK), Impreza [17>] (GT) Hatchback, Legacy [15>] (BN), Liberty [15>] (BN), Outback [15>] (BS), Pleo Plus [11>17], Pleo Plus [17>], Stella [10>14], Stella [14>], XV Crosstrek [17>] (GK).

## SOSTITUZIONE BATTERIA

**MERCEDES-BENZ:** A [18>] (177), A [18>] (177) L Sedan, A [18>] (177) Sedan, B [19>] (247), C [14>] (205), C [14>] (205) L, C [14>] (205) T, C [15>] (205) Coupé, C [16>] (205) Cabrio, CLA [19>] (118), CLA [19>] (118) Shooting Brake, E [16>] (213), E [16>] (213) L, E [16>] (213) T, E [17>] (238) Cabrio, E [17>] (238) Coupé, G [18>] (463) T L, GLB [19>] (247), GLC [15>] (253), GLC [16>] (253) Coupé, GLC [18>] (253) L, GLE [19>] (167), GLE [20>] (167) Coupé, GLS [19>] (167), GLS [20>] (167) Maybach.

## VEICOLI ELETTRICI

**FORD:** Fusion [05>12] (CD338) Sedan.

**HYUNDAI:** Kona.

**KIA:** Niro.

**LINCOLN:** MKZ I [06>12] (CD378).

**MERCURY FORD:** Milan [06>11] (CD334).

Novità DASHBOARD

Copertura Marche

Link

## Mercato NORD AMERICA

### ASSISTENZA AL PARCHEGGIO

**KIA:** Sorento III [15>] (UM).

### ASSISTENZA ALLA GUIDA

**PORSCHE:** Panamera [17>] (971).

**ACURA:** ILX [13>] (DE), MDX [14>] (YD), NSX [16>] (NC), RDX [19>] (TC), RLX [13>] (KC), TLX [14>] (UB).

**FIAT:** 500X [15>] (334).

**FORD:** Expedition III [14>17] (U324) Facelift, Expedition III EL/MAX [14>17] (U354) Facelift, Expedition IV [17>] (U553), Expedition IV MAX [17>] (U553), Explorer V [10>15] (U502), Explorer V [15>19] (U502) Facelift, F150 [14>] (P552), Flex [13>] (D471) Facelift, Fusion [05>12] (CD338) Sedan, Mustang VI [15>] (S550) Cabrio, Mustang VI [15>] (S550) Coupé, Taurus VI [12>19] Facelift.

**HONDA:** Accord IX [13>17] (CT/CR) Coupé, Accord IX [13>17] (CT/CR) Sedan, Accord IX [14>15] (CT/CR) Hybrid, Accord X [18>] (CV) Hybrid, Accord X [18>] (CV) Sedan, Civic IX [12>17] (FB/FG) Hatchback, Civic IX [12>17] (FB/FG) Hatchback Hybrid, Civic IX [14>18] (FB/FG) Wagon, Civic X [17>] (FC/FK) Coupé, Civic X [17>] (FC/FK) Hatchback, Civic X [17>] (FC/FK) Sedan, Crosstour [10>15], CR-V [12>18] (RM), CR-V [17>] (RW/RT), CR-Z [10>16] (ZF), Fit [14>] (GK), HR-V [15>] (RU), Insight [09>14] (ZE2), Odyssey [11>17] (RL5), Odyssey [18>] (RL6), Pilot [09>15] (YF), Pilot [16>] (YF), Ridgeline [06>15] (YK), Ridgeline [16>] (YK).

**JEEP:** Renegade [14>] (BU).

**LAND ROVER:** Defender 110 (L316), Defender 130 (L316), Defender 90 (L316).

**LINCOLN:** Continental [16>] (D544), MKC [14>] (C489), MKS [13>16] (D385) Facelift, MKT [13>] (D472) Facelift, MKX I [11>15] (U388) Facelift, MKX II [15>18] (U540), MKZ I [06>12] (CD378), MKZ II [12>16] (CD533), MKZ II [16>] (CD533) Facelift, Nautilus [18>] (U540), Navigator III [14>17] (U326) Facelift, Navigator III L [14>17] (U418) Facelift, Navigator IV [17>] (U554), Navigator IV L [17>] (U554).

**MASERATI:** Ghibli [13>] (M157), Ghibli Diesel [13>] (M157), Ghibli S [13>] (M157), Ghibli S Q4 [13>] (M157), GranTurismo, Levante, Levante [16>] (M161), Levante Diesel [16>] (M161), Levante GTS [18>] (M161), Levante S [16>] (M161), Levante Trofeo [18>] (M161), Quattroporte [13>] (M156), Quattroporte Diesel [13>] (M156), Quattroporte GTS [13>] (M156), Quattroporte S [13>] (M156), Quattroporte S Q4 [13>] (M156).

**MAZDA:** CX-3 [17>] (DK) Facelift, CX-5 [17>] (KF), CX-9 [17>] (TC), Mazda3 [13>18] (BY) Hybrid, Mazda3 [17>18] (BN), Mazda3 [17>18] (BN) Sedan, Mazda6 [16>] (GL), Mazda6 [16>] (GL) Station Wagon.

**MERCURY FORD:** Milan [06>11] (CD334).

**SUBARU:** Ascent [18>] (WM), Forester [19>] (SK), Impreza [17>] (GK), Impreza [17>] (GT) Hatchback, Legacy

Mercato  
EUROPA

Mercato  
NORD AMERICA

Mercato  
BRASILE

Mercato  
INDIA

[15>] (BN), Outback [15>] (BS), XV Crosstrek [17>] (GK).

### CALIBRAZIONE TELECAMERA/RADAR

**PORSCHE:** Panamera [17>] (971).

**FIAT:** 500X [15>] (334).

**JEEP:** Renegade [14>] (BU).

**MAZDA:** CX-3 [17>] (DK) Facelift, CX-5 [17>] (KF), CX-9 [17>] (TC), Mazda3 [13>18] (BY) Hybrid, Mazda3 [17>18] (BN), Mazda3 [17>18] (BN) Sedan, Mazda6 [16>] (GL), Mazda6 [16>] (GL) Station Wagon.

### CAMBIO LINGUA

**CHEVROLET:** Corvette C6 [04>13] Convertible, Corvette C6 [04>13] Coupé, Avalanche [07>13], Silverado 1500 [07>13], Silverado 2500 [07>13], Suburban [07>13], Tahoe [07>14].

**HUMMER:** H2 [03>].

### CODIFICA CHIAVI

**DODGE:** Promaster.

**FERRARI:** 612 Scaglietti [04>07] (F137), 612 Scaglietti [07>11] (F137 MY).

**HUMMER:** H2 [03>].

**MASERATI:** Quattroporte [04>07] (M139), Quattroporte [07>12] (M139 EV07).

### FAST FIT

**CHEVROLET:** Corvette C6 [04>13] Convertible, Corvette C6 [04>13] Coupé.

**PORSCHE:** 911, 911 [93>00] (993), 918, 918 Spyder [13>15], Boxster, Cayenne, Cayenne [07>10] (9PA/957), Cayenne [10>17] (92A/958), Cayman, Macan, Macan [14>] (95B), Panamera [09>16] (970).

**AUDI:** A3, A4 [15>] (8W2), A4 [15>] (8W5) Avant, A4 [16>] (8WH) Avant Allroad, A5 [16>] (F53) Coupé, A5 [16>] (F57) Cabrio, A5 [16>] (F5A) Sportback, A6 [18>] (4K2), A6 [18>] (4K5) Avant, A7 [18>] (4KA) Sportback, A8 [18>] (4N2), A8 [18>] (4N8) L, E-Tron [19>] (GE), Q5 [17>] (FY), Q7 [15>] (4MB), Q8 [18>] (4MN), RS3, RS4 [17>] (8W5) Avant, RS5 [17>] (F53) Coupé, S3, S4 [16>] (8W2), S4 [16>] (8W5) Avant, S5 [16>] (F53) Coupé, S5 [16>] (F57) Cabrio, S5 [16>] (F5A) Sportback, S6 [19>] (4K2), S6 [19>] (4K5) Avant, S7 [19>] (4KA) Sportback, SQ5 [17>] (FY), SQ7 [16>] (4MB).

**CHEVROLET:** Avalanche [07>13], Silverado, Silverado [02>04], Silverado [05>13], Silverado [14>], Silverado 1500 [07>13], Silverado 2500 [99>07], Silverado 2500 [07>13], Silverado 2500 [14>19], Suburban [07>13], Tahoe [07>14].

**CHRYSLER:** 200, 300M [98>04] (LH), Cirrus [98>00] (JA/J2), Concorde [98>04] (LH), Grand Voyager [01>07]

Novità DASHBOARD

Copertura Marche

Link

(RG/RS), LHS [98>04] (LH), Neon [94>05] (PL), PT Cruiser [00>10], PT Cruiser [01>10] Cabrio, Sebring [95>00] (JX) Cabrio, Stratus [95>01] (JA), Town and Country [00>07] (RS), Voyager [84>01] (AS/ES/NS/GS), Voyager [01>07] (RG/RS).

**DODGE:** Caravan [96>00] (NS), Dakota [97>04] (AN), Dart, Durango [97>04] (DN), Grand Caravan [01>07] (RS/RG), Intrepid [98>04] (LH), Promaster City, RAM, RAM 1500 [94>01] (BR/BE), RAM 1500 [02>09] (DR), RAM 2500 [94>01] (BR/BE), RAM 2500 [03>09] (DR), RAM 3500 [94>01] (BR/BE), Sprinter, Sprinter 2500 3500, Stratus [95>00] (JA/J2).

**FERRARI:** 458 [09>14] (F142) Italia, 458 [11>14] (F142) Spider, 458 [13>15] (F142) Speciale, 458 [13>15] (F142) Speciale A, 488 [15>] (F142M) GTB, 488 [15>] (F142M) Spider, FF [11>15] (F151), GTC4Lusso [16>] (F151M), GTC4Lusso T [17>] (F151G), LaFerrari [13>] (F150), LaFerrari Aperta [16>] (F150).

**FIAT:** 500 [07>] (312), 500C [09>] (312), 500L [12>] (330), 500L [13>] (334) Living.

**FORD:** Transit 2014, C-Max, E, Edge II [14>18] (CD539), Edge II [18>] (CD539) Facelift, Escape III [12>17] (C520), Escape III [17>19] (C520) Facelift, Expedition, Expedition III [14>17] (U324) Facelift, Expedition III EL/MAX [14>17] (U354) Facelift, Expedition IV [17>] (U553), Expedition IV MAX [17>] (U553), Explorer, Explorer V [10>15] (U502), Explorer V [15>19] (U502) Facelift, F, F150, F150 [14>] (P552), Fiesta, Flex [08>12] (D471), Flex [13>] (D471) Facelift, Focus, Focus III [11>14] (C346NA) Hatchback | NA, Focus III [11>14] (C346NA) Sedan | NA, Focus III [15>18] (C346NA) Hatchback Facelift | NA, Focus III [15>18] (C346NA) Sedan Facelift | NA, Fusion, Fusion [13>] (CD391) Sedan, Mustang, Mustang VI [15>] (S550) Cabrio, Mustang VI [15>] (S550) Coupé, Ranger, Ranger [12>14] (P375), Taurus VI [09>12], Taurus VI [12>19] Facelift, Tourneo, Tourneo Connect [13>] (V408), Tourneo Custom [13>] (V362).

**FREIGHTLINER:** Sprinter, Sprinter 2500 3500.

**GMC:** Sierra [02>04], Sierra [05>13], Sierra [14>], Sierra 2500 [99>07], Sierra 2500 [07>13], Sierra 2500 [14>19].

**HUMMER:** H2 [03>].

**HYUNDAI:** Azera, Ioniq, Kona [18>] (OS) EV, Santa, Sonata.

**INFINITI:** Q30 [15>] (H15), QX30 [16>] (H15).

**JAGUAR:** F-Pace, F-Pace [18>] (X761), F-Type [13>] (X152) Cabrio, F-Type [13>] (X152) Coupé, I-Pace, I-Pace [18>] (X590), S-Type, S-Type [98>08] (X200), XE, XE [18>] (X760) Sedan, XF, XF [08>15] (X250) Sedan, XF [09>15] (X250) Sedan R, XF [13>15] (X250) Sedan R-S, XF [13>15] (X250) Sportbrake R-S, XF [18>] (X260) Sedan, XF [18>] (X260) Sedan S, XF [18>] (X260) Sportbrake, XF [18>] (X260) Sportbrake S, XJ, XJ [10>] (X351) Sedan, XJ [13>] (X351) Sedan R, XK [06>14] (X150) Cabrio, XK [06>14] (X150) Cabrio R, XK [06>14] (X150) Coupé, XK [06>14] (X150) Coupé R.

**JEEP:** Cherokee [88>01] (XJ), Cherokee [01>07] (KJ), Grand Cherokee [98>04] (WJ), Grand Cherokee [00>04] (WG), Liberty [00>07] (KJ), Wrangler [97>06] (TJ).

**KIA:** Niro [19>] (DE) EV.



Mercato  
EUROPA

Mercato  
NORD AMERICA

Mercato  
BRASILE

Mercato  
INDIA

**LAND ROVER:** Discovery IV [09>16] (L319), Discovery Sport [20>] (L550), Discovery V [17>] (L462), Range Rover Evoque [19>] (L551), Range Rover III [09>12] (L322) Facelift, Range Rover IV [13>16] (L405), Range Rover IV [17>] (L405), Range Rover Sport I [09>13] (L320) Facelift, Range Rover Sport II [14>16] (L494), Range Rover Sport II [17>] (L494), Range Rover Velar [17>] (L560).

**LINCOLN:** Continental [16>] (D544), Mark, MKC [14>] (C489), MKS [08>12] (D385), MKS [13>16] (D385) Facelift, MKT [09>12] (D472), MKT [13>] (D472) Facelift, MKX II [15>18] (U540), MKZ, MKZ II [12>16] (CD533), MKZ II [16>] (CD533) Facelift, Nautilus [18>] (U540), Navigator, Navigator III [14>17] (U326) Facelift, Navigator III L [14>17] (U418) Facelift, Navigator IV [17>] (U554), Navigator IV L [17>] (U554), Town, Zephyr.

**MASERATI:** Ghibli [13>] (M157), Ghibli Diesel [13>] (M157), Ghibli S [13>] (M157), Ghibli S Q4 [13>] (M157), GranTurismo, Levante, Levante [16>] (M161), Levante Diesel [16>] (M161), Levante GTS [18>] (M161), Levante S [16>] (M161), Levante Trofeo [18>] (M161), Quattroporte [13>] (M156), Quattroporte Diesel [13>] (M156), Quattroporte GTS [13>] (M156), Quattroporte S [13>] (M156), Quattroporte S Q4 [13>] (M156).

**MAZDA:** Tribute [00>07] (U204), Tribute [08>11] (U377).

**MERCEDES-BENZ:** Sprinter 2500 3500 (901-905), Sprinter 2500 3500 (906), A [18>] (177), A [18>] (177) Sedan, B [19>] (247), C, C [14>] (205), C [14>] (205) L, C [14>] (205) T, C [15>] (205) Coupé, C [16>] (205) Cabrio, Citan [13>] (415), CLA, CLA [19>] (118), CLA [19>] (118) Shooting Brake, E, G, G [92>] (461), GLB, GLB [19>] (247), GLC, GLC [15>] (253), GLC [16>] (253) Coupé, GLC [18>] (253) L, GLE, GLS, Metris, Metris (447), Metris [14>] (447), S [13>] (222), S [13>] (222) L, S [14>] (217) Coupé, S [15>] (222) Maybach, S [16>] (217) Cabrio, V, V / Viano [03>14] (639), V [14>] (447). MINI: Mini (R50) [01>06] Cooper, Mini (R50) [01>06] One, Mini (R50) [01>06] One de luxe, Mini (R52) [04>09] Cabrio Cooper, Mini (R52) [04>09] Cabrio Cooper S, Mini (R52) [04>09] Cabrio John Cooper Works, Mini (R52) [04>09] Cabrio One, Mini (R53) [02>06] Cooper S, Mini (R53) [03>06] John Cooper Works.

**NISSAN:** NV 1500, NV 2500, NV 3500.

**PLYMOUTH:** Breeze [98>01] (JA), Prowler [98>02] (PR).

**SUBARU:** Ascent, Ascent [18>] (WM), Forester, Forester [13>18] (SJ), Forester [19>] (SK), Impreza, Impreza [11>16] (GJ), Impreza [11>16] (GP) Hatchback, Impreza [17>] (GK), Impreza [17>] (GT) Hatchback, Legacy, Legacy [09>14] (BM), Legacy [09>14] (BR) Kombi, Legacy [15>] (BN), Outback, Outback [09>14] (BR), Outback [15>] (BS), WRX, WRX [14>] (VA), XV, XV Crosstrek [12>16] (GP), XV Crosstrek [17>] (GK).

**VOLKSWAGEN:** Beetle (Maggiolino) [11>] (5C1/5C2), Beetle (Maggiolino) [13>] (5C7/5C8) Cabriolet, Golf VI [08>13] (5K1), Golf VI [09>13] (AJ5) Variant, Golf VI [09>14] (521) Plus, Golf VI [11>15] (517) Cabriolet, Jetta [10>14] (AJ) SportWagen, Jetta [10>18] (162).

## GOMMISTI

**CHEVROLET:** Corvette C6 [04>13] Convertible, Corvette C6 [04>13] Coupé.

**PORSCHE:** 911 [12>19] (991), 918 Spyder [13>15], Boxster [12>16] (981), Cayenne [10>17] (92A/958), Cayman

Novità DASHBOARD

Copertura Marche

Link

[13>16] (981), Macan [14>] (95B).

**ACURA:** ILX [13>] (DE), MDX [14>] (YD), NSX [16>] (NC), RDX [19>] (TC), RLX [13>] (KC), TLX [14>] (UB).

**AUDI:** A3 [03>13] (8P1), A3 [03>13] (8PA) Sportback, A3 [08>14] (8P7) Cabrio, RS3 [11>14] (8PA) Sportback, S3 [06>13] (8P1), S3 [06>13] (8PA) Sportback.

**CHEVROLET:** Silverado [05>13], Silverado [14>], Silverado 1500 [14>19], Silverado 2500 [14>19].

**CHRYSLER:** 200 [15>17] (UF).

**DODGE:** Dart [12>16] (PF), Promaster, Sprinter 2500 3500.

**FERRARI:** 458 [09>14] (F142) Italia, 458 [11>14] (F142) Spider, 458 [13>15] (F142) Speciale, 458 [13>15] (F142) Speciale A, 488 [15>] (F142M) GTB, 488 [15>] (F142M) Spider, FF [11>15] (F151), GTC4Lusso [16>] (F151M), GTC4Lusso T [17>] (F151G), LaFerrari [13>] (F150), LaFerrari Aperta [16>] (F150).

**FORD:** C-Max [12>18] (C344) Hybrid, E Series / E Series Super Duty, Escape I [01>07] (U204), Escape II [07>12] (U377), Escape III [12>17] (C520), Escape III [17>19] (C520) Facelift, Expedition II [03>06] (U222), Expedition III [06>14] (U324), Expedition III EL/MAX [06>14] (U354), Explorer III [01>05] (U152), Explorer IV [05>10] (U251), Explorer Sport Trac [06>10] (U251), F Series Super Duty, F150 [03>08] (P221), Fiesta VI [11>13] (B299NA) Hatchback | NA, Fiesta VI [11>13] (B299NA) Sedan | NA, Fiesta VI [14>19] (B299NA) Hatchback Facelift | NA, Fiesta VI [14>19] (B299NA) Sedan Facelift | NA, Focus III [11>14] (C346NA) Hatchback | NA, Focus III [11>14] (C346NA) Hatchback EV | NA, Focus III [11>14] (C346NA) Sedan | NA, Focus III [15>18] (C346NA) Hatchback Facelift | NA, Focus III [15>18] (C346NA) Hatchback Facelift EV | NA, Focus III [15>18] (C346NA) Sedan Facelift | NA, Fusion [05>12] (CD338) Sedan, Mustang V [10>14] (S197) Facelift Cabrio, Mustang V [10>14] (S197) Facelift Coupé, Mustang VI [15>] (S550) Cabrio, Mustang VI [15>] (S550) Coupé, Ranger [12>14] (P375), Tourneo Connect [13>] (V408).

**FREIGHTLINER:** Sprinter 2500 3500.

**GMC:** Sierra [05>13], Sierra [14>], Sierra 1500 [07>13], Sierra 1500 [14>19], Sierra 2500 [07>13], Sierra 2500 [14>19].

**HONDA:** Accord IX [13>17] (CT/CR) Coupé, Accord IX [13>17] (CT/CR) Sedan, Accord IX [14>15] (CT/CR) Hybrid, Accord X [18>] (CV) Hybrid, Accord X [18>] (CV) Sedan, Civic IX [12>17] (FB/FG) Hatchback, Civic IX [12>17] (FB/FG) Hatchback Hybrid, Civic IX [14>18] (FB/FG) Wagon, Civic X [17>] (FC/FK) Coupé, Civic X [17>] (FC/FK) Hatchback, Civic X [17>] (FC/FK) Sedan, Crosstour [10>15], CR-V [12>18] (RM), CR-V [17>] (RW/RT), CR-Z [10>16] (ZF), Fit [14>] (GK), HR-V [15>] (RU), Insight [09>14] (ZE2), Odyssey [11>17] (RL5), Odyssey [18>] (RL6), Pilot [09>15] (YF), Pilot [16>] (YF), Ridgeline [06>15] (YK), Ridgeline [16>] (YK).

**HYUNDAI:** Azera [06>11] (TG), Ioniq [17>] (AE) EV, Ioniq [17>] (AE) Hybrid, Ioniq [17>] (AE) Plug-in Hybrid, Santa Fe [06>12] (CM), Sonata IV [98>05] (EF).

**INFINITI:** Q30 [15>] (H15), QX30 [16>] (H15).

**JAGUAR:** F-Pace [18>] (X761), I-Pace [18>] (X590), S-Type [98>08] (X200), XE [18>] (X760) Sedan, XF [18>]

Mercato  
EUROPA

Mercato  
NORD AMERICA

Mercato  
BRASILE

Mercato  
INDIA

(X260) Sedan, XF [18>] (X260) Sedan S, XF [18>] (X260) Sportbrake, XF [18>] (X260) Sportbrake S, XJ [03>10] (X350/X358) Sedan, XJ [03>10] (X350/X358) Sedan R.

**JEEP:** Cherokee [14>] (KL).

**KIA:** Niro [17>] (DE) Hybrid, Niro [18>] (DE) Plug-in Hybrid, Sorento III [15>] (UM).

**LAND ROVER:** Discovery Sport [20>] (L550), Discovery V [17>] (L462), Range Rover Evoque [19>] (L551), Range Rover IV [17>] (L405), Range Rover Sport II [17>] (L494), Range Rover Velar [17>] (L560).

**LINCOLN:** Mark LT I [05>08] (P397), MKZ I [06>12] (CD378), Navigator II [03>06] (U228), Navigator III [06>14] (U326), Navigator III L [06>14] (U418), Town Car [98>11] (FN145), Zephyr [06>06] (CD378).

**MASERATI:** Coupé [01>07] (M138), Coupé GranSport [05>07] (M138), GranTurismo [07>] (M145), GranTurismo [10>] (M145) Convertible, Levante [16>] (M161), Levante Diesel [16>] (M161), Levante GTS [18>] (M161), Levante S [16>] (M161), Levante Trofeo [18>] (M161), Quattroporte [07>12] (M139 EV07), Spyder [01>07] (M138), Spyder GranSport [05>07] (M138).

**MAZDA:** Tribute [00>07] (U204), Tribute [08>11] (U377).

**MERCEDES-BENZ:** Sprinter 2500 3500 (901-905), Sprinter 2500 3500 (906), A [18>] (177), A [18>] (177) Sedan, B [19>] (247), C [14>] (205), C [14>] (205) L, C [14>] (205) T, C [15>] (205) Coupé, C [16>] (205) Cabrio, Citan [13>] (415), CLA [19>] (118), CLA [19>] (118) Shooting Brake, E [16>] (213), E [16>] (213) L, E [16>] (213) T, E [17>] (238) Cabrio, E [17>] (238) Coupé, G [18>] (463) T L, GLB [19>] (247), GLC [15>] (253), GLC [16>] (253) Coupé, GLC [18>] (253) L, GLE [19>] (167), GLE [20>] (167) Coupé, GLS [19>] (167), GLS [20>] (167) Maybach, Metris (447), Metris [14>] (447), V / Viano [03>14] (639), V [14>] (447).

**MERCURY FORD:** Grand Marquis IV [03>11] (EN114), Mariner [04>07] (U364), Mariner [08>11] (U377), Milan [06>11] (CD334), Mountaineer II [01>05] (U152), Mountaineer III [06>10] (U251).

**NISSAN:** NV 1500, NV 2500, NV 3500.

**SUBARU:** Ascent, Ascent [18>] (WM), Forester, Forester [13>18] (SJ), Forester [19>] (SK), Impreza, Impreza [17>] (GK), Impreza [17>] (GT) Hatchback, Legacy [15>] (BN), Outback [15>] (BS), WRX, WRX [14>] (VA), XV, XV Crosstrek [17>] (GK).

**VOLKSWAGEN:** Beetle (Maggiolino) [11>] (5C1/5C2), Beetle (Maggiolino) [13>] (5C7/5C8) Cabriolet, Golf VI [08>13] (5K1), Golf VI [09>13] (AJ5) Variant, Golf VI [09>14] (521) Plus, Golf VI [11>15] (517) Cabriolet, Jetta [10>14] (AJ) SportWagen, Jetta [10>18] (162).

## PROGRAMMAZIONE MODALITÀ TRASPORTO

**PORSCHE:** Panamera [09>16] (970).

**BMW:** 5 [95>04] (E39), 5 [95>04] (E39) Touring, 7 [92>02] (E38).

**FERRARI:** 458 [09>14] (F142) Italia, 458 [11>14] (F142) Spider, California [09>12] (F149), California 30 [12>14] (F149), FF [11>15] (F151).

Novità DASHBOARD

Copertura Marche

Link

**MASERATI:** Ghibli [13>] (M157), Ghibli Diesel [13>] (M157), Ghibli S [13>] (M157), Ghibli S Q4 [13>] (M157), Levante, Levante [16>] (M161), Levante Diesel [16>] (M161), Levante GTS [18>] (M161), Levante S [16>] (M161), Levante Trofeo [18>] (M161), Quattroporte [13>] (M156), Quattroporte Diesel [13>] (M156), Quattroporte GTS [13>] (M156), Quattroporte S [13>] (M156), Quattroporte S Q4 [13>] (M156).

### RIGENERAZIONE FILTRO PARTICOLATO

**FIAT:** 500 [07>] (312), 500C [09>] (312), 500L [12>] (330), 500L [13>] (334) Living.

**FORD:** Edge II [14>18] (CD539), Escape III [12>17] (C520), Explorer V [10>15] (U502), Explorer V [15>19] (U502) Facelift, F150 [14>] (P552), Flex [13>] (D471) Facelift, Fusion [05>12] (CD338) Sedan, Mustang VI [15>] (S550) Cabrio, Mustang VI [15>] (S550) Coupé, Taurus VI [12>19] Facelift.

**LINCOLN:** Continental [16>] (D544), MKC [14>] (C489), MKS [13>16] (D385) Facelift, MKT [13>] (D472) Facelift, MKX I [11>15] (U388) Facelift, MKX II [15>18] (U540), MKZ I [06>12] (CD378), MKZ II [12>16] (CD533), MKZ II [16>] (CD533) Facelift, Nautilus [18>] (U540).

**MERCEDES-BENZ:** A [18>] (177), A [18>] (177) Sedan, B [19>] (247), CLA [19>] (118), CLA [19>] (118) Shooting Brake, E [16>] (213), G [18>] (463) T L.

**SUBARU:** Ascent, Ascent [18>] (WM), Forester, Forester [13>18] (SJ), Forester [19>] (SK), Impreza, Impreza [11>16] (GJ), Impreza [11>16] (GP) Hatchback, Impreza [17>] (GK), Impreza [17>] (GT) Hatchback, Legacy, Legacy [09>14] (BM), Legacy [09>14] (BR) Kombi, Legacy [15>] (BN), Outback, Outback [09>14] (BR), Outback [15>] (BS), WRX, WRX [14>] (VA), XV, XV Crosstrek [12>16] (GP), XV Crosstrek [17>] (GK).

### SOSTITUZIONE BATTERIA

**MERCEDES-BENZ:** A [18>] (177), A [18>] (177) Sedan, B [19>] (247), C [14>] (205), C [14>] (205) L, C [14>] (205) T, C [15>] (205) Coupé, C [16>] (205) Cabrio, CLA [19>] (118), CLA [19>] (118) Shooting Brake, GLB [19>] (247), GLC [15>] (253), GLC [16>] (253) Coupé, GLC [18>] (253) L, GLE [19>] (167), GLE [20>] (167) Coupé, GLS [19>] (167), GLS [20>] (167) Maybach, Metris (447).

### VEICOLI ELETTRICI

**FORD:** Fusion [05>12] (CD338) Sedan.

**HYUNDAI:** Kona [18>] (OS) EV.

**KIA:** Niro [19>].

**LINCOLN:** MKZ I [06>12] (CD378).

**MERCURY FORD:** Milan [06>11] (CD334).

Mercato  
EUROPAMercato  
NORD AMERICAMercato  
BRASILEMercato  
INDIA

## Mercato BRASILE

### ASSISTENZA ALLA GUIDA

**PORSCHE:** Panamera [17>] (971).

**FORD:** Fusion | BR, Mustang | BR.

**HONDA:** Civic | BR, CR-V | BR, Fit | BR, HR-V | BR.

**JEEP:** Renegade | BR.

**LAND ROVER:** Defender 90.

**MASERATI:** Ghibli, Levante, Quattroporte.

**RENAULT:** Captur | BR, Logan | BR, Sandero | BR.

**VOLKSWAGEN:** Jetta | BR, T-Cross | BR, Tiguan | BR.

### CALIBRAZIONE TELECAMERA/RADAR

**PORSCHE:** Panamera [17>] (971).

**JEEP:** Renegade | BR.

**RENAULT:** Captur | BR, Logan | BR, Sandero | BR.

### CAMBIO LINGUA

**CHEVROLET:** Corvette C6 [04>13] Convertible, Corvette C6 [04>13] Coupé.

### CODIFICA CHIAVI

**CITROËN:** Jumper [06>15] (U9), Jumper [15>19] (U9).

**FERRARI:** 612 Scaglietti [04>07] (F137), 612 Scaglietti [07>11] (F137 MY).

**FIAT:** Ducato (X250) [06>] Minibus, Ducato (X250) [06>11], Ducato (X250) FL [11>14], Ducato (X290) FL [14>].

**FORD:** Transit 2006, Transit 2012, Transit 2014.

**IVECO (LATAM):** Cityclass, Daily.

**MASERATI:** Quattroporte [04>07] (M139), Quattroporte [07>12] (M139 EV07).

**PEUGEOT:** Boxer [06>15] (U9), Boxer [15>19] (U9).

### FAST FIT

**CHEVROLET:** Corvette C6 [04>13] Convertible, Corvette C6 [04>13] Coupé.

**PORSCHE:** 911 [93>00] (993), 918, 918 Spyder [13>15], Boxster, Cayenne [07>10] (9PA/957), Cayenne [10>17] (92A/958), Cayman, Macan, Macan [14>] (95B), Panamera [09>16] (970).

Novità DASHBOARD

Copertura Marche

Link

**CHEVROLET:** , Silverado [02>04], Silverado [05>13], Silverado [14>].

**CHRYSLER:** Neon | BR.

**CITROËN:** C 3 | BR, C 3 Picasso | BR, DS3 | BR, Jumpy, Jumpy [07>16] (G9), Berlingo (M59), Berlingo [08>14] (B9) Van, Berlingo [14>18] (B9) Van, Berlingo Entreprise, Jumper, Jumper (23), Jumper [06>15] (U9), Jumper [15>19] (U9), Jumpy [>07], Nemo.

**DODGE:** Dakota | BR, RAM 1500 | BR.

**FERRARI:** 458 [09>14] (F142) Italia, 458 [11>14] (F142) Spider, 458 [13>15] (F142) Speciale, 458 [13>15] (F142) Speciale A, 488 [15>] (F142M) GTB, 488 [15>] (F142M) Spider, FF [11>15] (F151), GTC4Lusso [16>] (F151M), GTC4Lusso T [17>] (F151G), LaFerrari [13>] (F150), LaFerrari Aperta [16>] (F150).

**FIAT:** Doblò | BR, Doblò, Doblò Cargo (223) [00>05] , Doblò Cargo (223) [06>09] , Doblò Cargo (263) [10>15], Ducato (X230) [>02], Ducato (X244) [02>06], Ducato (X250) [06>] Minibus, Ducato (X250) [06>11], Ducato (X250) FL [11>14], Ducato (X290) FL [14>], Fiorino, Fiorino 08 (225), Scudo, Scudo (222), Scudo [07>] (272).

**FORD:** Edge | BR, Fusion | BR, Mustang | BR, Ranger | BR, Ranger [12>14], Transit, Transit 2006, Transit 2012, Transit 2014, Transit Argentina [07>13], Transit Argentina [14>], Transit Connect 2014, Transit Custom 2013, Transit Latin America [14>].

**GMC:** Sierra (Light Truck) [02>04], Sierra (Light Truck) [05>13], Sierra (Light Truck) [14>].

**HYUNDAI:** H1 Truck, H100 Truck, H350, HR Series.

**IVECO (LATAM):** Cityclass, Daily.

**JEEP:** Cherokee | BR, Grand Cherokee | BR, Wrangler | BR.

**KIA:** K-Series.

**LAND ROVER:** Defender 110, Defender 130, Defender 90.

**MASERATI:** Ghibli [13>] (M157), Ghibli Diesel [13>] (M157), Ghibli S [13>] (M157), Ghibli S Q4 [13>] (M157), Levante [16>] (M161), Levante Diesel [16>] (M161), Levante GTS [18>] (M161), Levante S [16>] (M161), Levante Trofeo [18>] (M161), Quattroporte, Quattroporte [13>] (M156), Quattroporte Diesel [13>] (M156), Quattroporte GTS [13>] (M156), Quattroporte S [13>] (M156), Quattroporte S Q4 [13>] (M156), Spyder.

**MAZDA:** BT-50 [11>15].

**MERCEDES-BENZ:** C | BR, (LATAM, Sprinter I-II (901-905), Sprinter III (906), Sprinter III (906) M.Y. 2013, Viano (639) VAN, Vito (639) VAN, Vito [14>] (447) VAN, V-Klasse, V-Klasse [14>] (447).

**MERCEDES-BENZ (LATAM / ASIA PACIFIC):** Sprinter I-II (901-905), Sprinter III (906).

**NISSAN:** NV 400 [10>14], NV 400 [14>].

**PEUGEOT:** Boxer (U3), Boxer [06>15] (U9), Boxer [15>19] (U9), Expert [>07], Expert [07>16] (G9), Partner (M4), Partner (M5), Partner [08>14] (B9), Partner [14>18] (B9).

**RENAULT:** Kangoo | BR, Kangoo II [08>12], Kangoo II [13>], Mascott DXI Euro 4/5, Master, Master 3 [10>14], Master 3 [14>19].

Mercato  
EUROPA

Mercato  
NORD AMERICA

Mercato  
BRASILE

Mercato  
INDIA

**TROLLER:** T4 | BR.

**VOLKSWAGEN:** Polo | BR, Caddy, Caddy [10>15] (2C), Caddy [16>] (SA), California, Caravelle, Crafter, Crafter [06>16] (2E-2F), Multivan, Transporter.

## GOMMISTI

**CHEVROLET:** Corvette C6 [04>13] Convertible, Corvette C6 [04>13] Coupé, Corvette C7 Stingray [14>] Convertible, Corvette C7 Stingray [14>] Coupé, Corvette C7 Z06 [14>] Convertible, Corvette C7 Z06 [14>] Coupé.

**PORSCHE:** 911 [12>19] (991), 918 Spyder [13>15], Boxster [12>16] (981), Cayenne [10>17] (92A/958), Cayman [13>16] (981), Macan [14>] (95B).

**CHEVROLET:** Camaro | BR, Cobalt | BR, Cruze | BR, Malibu | BR, Sonic | BR, Tracker | BR, Volt | BR, Silverado [05>13], Silverado [14>].

**CITROËN:** Jumpy [07>16] (G9), Jumper (U5), Jumper [06>15] (U9), Jumper [15>19] (U9).

**FERRARI:** 458 [09>14] (F142) Italia, 458 [11>14] (F142) Spider, 458 [13>15] (F142) Speciale, 458 [13>15] (F142) Speciale A, 488 [15>] (F142M) GTB, 488 [15>] (F142M) Spider, FF [11>15] (F151), GTC4Lusso [16>] (F151M), GTC4Lusso T [17>] (F151G), LaFerrari [13>] (F150), LaFerrari Aperta [16>] (F150).

**FIAT:** Doblò Cargo (263) [10>15], Ducato, Ducato (X244) [02>06], Ducato (X250) [06>] Minibus, Ducato (X250) [06>11], Ducato (X250) FL [11>14], Ducato (X290) FL [14>], Scudo [07>] (272).

**FORD:** Fusion | BR, Mustang | BR, Ranger | BR, E Series / E Series Super Duty, Ranger [12>14], Transit 2006, Transit 2012, Transit Argentina [07>13], Transit Connect, Transit Connect 2014.

**GMC:** Sierra (Light Truck) [05>13], Sierra (Light Truck) [14>].

**HYUNDAI:** H350.

**IVECO (LATAM):** Daily.

**MASERATI:** Coupé [01>07] (M138), Coupé GranSport [05>07] (M138), GranTurismo [07>] (M145), GranTurismo [10>] (M145) Convertible, Levante [16>] (M161), Levante Diesel [16>] (M161), Levante GTS [18>] (M161), Levante S [16>] (M161), Levante Trofeo [18>] (M161), Quattroporte [07>12] (M139 EV07), Spyder [01>07] (M138), Spyder GranSport [05>07] (M138).

**MAZDA:** BT-50 [11>15].

**MERCEDES-BENZ:** Sprinter I-II (901-905), Sprinter III (906), Sprinter III (906) M.Y. 2013, Viano (639) VAN, Vito (638) VAN, Vito (639) VAN, Vito [14>] (447) VAN, V-Klasse [14>] (447).

**MERCEDES-BENZ (LATAM / ASIA PACIFIC):** Sprinter I-II (901-905), Sprinter III (906).

**NISSAN:** NV 400 [10>14], NV 400 [14>].

**PEUGEOT:** Boxer (U5), Boxer [06>15] (U9), Boxer [15>19] (U9), Expert [07>16] (G9).

**RENAULT:** Kangoo II [13>], Master 3 [10>14], Master 3 [14>19].

**TROLLER:** T4 | BR.

Novità DASHBOARD

Copertura Marche

Link

**VOLKSWAGEN:** Caddy [04>10] (2K), Caddy [10>15] (2C), Caddy [82>92] (14-1A), Caddy [95>09] (9K9), California T4 [90>03], California T5 [03>09] (7H), California T5 [09>15] (7E), Caravelle T4 [90>03] (70-7D), Caravelle T5 [03>09] (7H), Caravelle T5 [09>15] (7E), Crafter [06>16] (2E-2F), Multivan T4 [90>03] (70-7D), Multivan T5 [03>09] (7H), Multivan T5 [09>15] (7E), Taro, Transporter T4 [90>00] (70-7D), Transporter T5 [03>09] (7H-7J), Transporter T5 [09>15] (7E-7F), Van.

### PROGRAMMAZIONE MODALITÀ TRASPORTO

**PORSCHE:** Panamera [09>16] (970).

**FERRARI:** 458 [09>14] (F142) Italia, 458 [11>14] (F142) Spider, California [09>12] (F149), California 30 [12>14] (F149), FF [11>15] (F151).

**MASERATI:** Ghibli [13>] (M157), Ghibli Diesel [13>] (M157), Ghibli S [13>] (M157), Ghibli S Q4 [13>] (M157), Levante, Levante [16>] (M161), Levante Diesel [16>] (M161), Levante GTS [18>] (M161), Levante S [16>] (M161), Levante Trofeo [18>] (M161), Quattroporte [13>] (M156), Quattroporte Diesel [13>] (M156), Quattroporte GTS [13>] (M156), Quattroporte S [13>] (M156), Quattroporte S Q4 [13>] (M156).

### RIGENERAZIONE FILTRO PARTICOLATO

**FORD:** Ranger, Transit.

**MAZDA:** BT-50 [11>15].

**TROLLER:** T4 | BR.

**VOLKSWAGEN:** Crafter [06>16] (2E-2F).

### SOSTITUZIONE BATTERIA

**MERCEDES-BENZ:** A [18>] (177), A [18>] (177) L Sedan, A [18>] (177) Sedan, B [19>] (247), C [14>] (205), C [14>] (205) L, C [14>] (205) T, C [15>] (205) Coupé, C [16>] (205) Cabrio, CLA [19>] (118), CLA [19>] (118) Shooting Brake, E [16>] (213), E [16>] (213) L, E [16>] (213) T, E [17>] (238) Cabrio, E [17>] (238) Coupé, G [18>] (463) T L, GLB [19>] (247), GLC [15>] (253), GLC [16>] (253) Coupé, GLC [18>] (253) L, GLE [19>] (167), GLE [20>] (167) Coupé.

### VEICOLI ELETTRICI

**FORD:** Fusion | BR.



Mercato  
EUROPA

Mercato  
NORD AMERICA

Mercato  
BRASILE

Mercato  
INDIA

## Mercato INDIA

### ASSISTENZA AL PARCHEGGIO

**KIA:** Sorento III [15>] (UM).

**RENAULT:** Captur II [20>], Clio V [19>] (XJA), Zoe II [19>].

### ASSISTENZA ALLA GUIDA

**PORSCHE:** Panamera [17>] (971).

**AUDI:** A1 [19>] (GBA) Sportback, A3 [12>] (8V1), A3 [12>] (8VA) Sportback, A3 [14>] (8V7) Cabrio, A3 [14>] (8VS) Sedan, Q2 [16>] (GA), Q3 [19>] (F3), Q3 [19>] (F3) Sportback, RS3 [15>] (8VA) Sportback, RS3 [17>] (8VS) Sedan, RSQ3 [19>] (F3), RSQ3 [19>] (F3) Sportback, S3 [14>] (8V1), S3 [14>] (8V7) Cabrio, S3 [14>] (8VA) Sportback, S3 [14>] (8VS) Sedan, SQ2 [18>] (GA), TT [14>] (8S3) Coupé, TT [14>] (8S3) S Coupé, TT [14>] (8S9) Roadster, TT [14>] (8S9) S Roadster, TT [16>] (8S3) RS Coupé, TT [16>] (8S9) RS Roadster.

**FIAT:** 500X [15>] (334).

**FORD:** Expedition III[14>17] (U324) Facelift, Expedition III EL/MAX [14>17] (U354) Facelift, Expedition IV[17>] (U553), Expedition IV MAX [17>] (U553), Explorer V [10>15] (U502), Explorer V [15>19] (U502) Facelift, F150 [14>] (P552), Flex [13>] (D471) Facelift, Fusion [05>12] (CD338) Sedan, Mustang VI [15>] (S550) Cabrio, Mustang VI [15>] (S550) Coupé, Taurus VI [12>19] Facelift.

**HONDA:** Accord IX [13>17] (CT/CR) Coupé, Accord IX [13>17] (CT/CR) Sedan, Accord IX [14>15] (CT/CR) Hybrid, Accord X [18>] (CV) Hybrid, Accord X [18>] (CV) Sedan, City VI [13>], Civic IX [12>17] (FB/FG) Hatchback, Civic IX [12>17] (FB/FG) Hatchback Hybrid, Civic IX [14>18] (FB/FG) Wagon, Civic X [17>] (FC/FK) Coupé, Civic X [17>] (FC/FK) Hatchback, Civic X [17>] (FC/FK) Sedan, Crosstour [10>15], CR-V [12>18] (RM), CR-V [17>] (RW/RT), CR-Z [10>16] (ZF), Fit [14>] (GK), HR-V [15>] (RU), Insight [09>14] (ZE2), Jazz [15>] (GK), MDX [13>] (YD3), Mobilio [14>] (2NH), N-Box [12>16] (JF), NSX [16>] (NC), Odyssey[08>13] (RB3/RB4), Odyssey[14>] (RC1/RC2), Odyssey [11>17] (RL5), Odyssey [18>] (RL6), Pilot [09>15] (YF), Pilot [16>] (YF), Ridgeline [06>15] (YK), Ridgeline [16>] (YK), Spiorior [09>15], Vezel [13>] (RU).

**JEEP:** Renegade [14>] (BU).

**KIA:** Cee'd [15>18] (JD) Facelift, Cee'd [15>18] (JD) Sportswagon Facelift, Pro Cee'd [15>18] (JD) Facelift

**LAND ROVER:** Defender110 (L316), Defender130 (L316), Defender90 (L316).

**MAZDA:** CX-3 [17>] (DK) Facelift, CX-5 [17>] (KF), CX-8 [17>] (KG), CX-9 [17>] (TC), Mazda3 [13>18] (BY) Hybrid, Mazda3 [17>18] (BN), Mazda3 [17>18] (BN) Sedan, Mazda6 [16>] (GL), Mazda6 [16>] (GL) Station Wagon.

**RENAULT:** Captur I [13>19] (X87/J5), Captur II [20>], Clio V [19>] (XJA), Kaptur [16>], Logan II [13>], Sandero II [13>] (B8), Twingo III [14>] (X07/BC), Zoe II [19>].

Novità DASHBOARD

Copertura Marche

Link

**SKODA:** Superb B8 [15>] (3V3), Superb B8 [15>] (3V5) Wagon.

**TOYOTA:** Pixis Epoch [11>17], Pixis Epoch [17>], Pixis Joy [16>], Pixis Mega [15>], Pixis Space [11>17].

**VOLKSWAGEN:** Golf VII [12>] (5G1).

### CALIBRAZIONE TELECAMERA/RADAR

**PORSCHE:** Panamera [17>] (971).

**AUDI:** A1 [11>18] (8X1/8XF), A1 [12>18] (8XA/8XK) Sportback, A1 [19>] (GBA) Sportback, A3, A4 [15>] (8W2), A4 [15>] (8W5) Avant, A4 [16>] (8WH) Avant Allroad, A5 [16>] (F53) Coupé, A5 [16>] (F57) Cabrio, A5 [16>] (F5A) Sportback, A6 [18>] (4K2), A6 [18>] (4K5) Avant, A7 [18>] (4KA) Sportback, A8 [18>] (4N2), A8 [18>] (4N8) L, E-Tron [19>] (GE), Q5 [17>] (FY), Q7 [15>] (4MB), Q8 [18>] (4MN), RS3, RS4 [17>] (8W5) Avant, RS5 [17>] (F53) Coupé, S3, S4 [16>] (8W2), S4 [16>] (8W5) Avant, S5 [16>] (F53) Coupé, S5 [16>] (F57) Cabrio, S5 [16>] (F5A) Sportback, S6 [19>] (4K2), S6 [19>] (4K5) Avant, S7 [19>] (4KA) Sportback, SQ5 [17>] (FY), SQ7 [16>] (4MB).

**FIAT:** 500X [15>] (334).

**JEEP:** Renegade [14>] (BU).

**KIA:** Cee'd [15>18] (JD) Facelift, Cee'd [15>18] (JD) Sportswagon Facelift, Pro Cee'd [15>18] (JD) Facelift.

**MAZDA:** CX-3 [17>] (DK) Facelift, CX-5 [17>] (KF), CX-8 [17>] (KG), CX-9 [17>] (TC), Mazda3 [13>18] (BY) Hybrid, Mazda3 [17>18] (BN), Mazda3 [17>18] (BN) Sedan, Mazda6 [16>] (GL), Mazda6 [16>] (GL) Station Wagon.

**RENAULT:** Captur I [13>19] (X87/J5), Captur II [20>], Clio V [19>] (XJA), Kaptur [16>], Logan II [13>], Sandero II [13>] (B8), Twingo III [14>] (X07/BC), Zoe II [19>].

**SKODA:** Superb B8 [15>] (3V3), Superb B8 [15>] (3V5) Wagon.

**TOYOTA:** Pixis Epoch [11>17], Pixis Epoch [17>], Pixis Joy [16>], Pixis Mega [15>], Pixis Space [11>17].

**VOLKSWAGEN:** Golf VII [12>] (5G1).

### CAMBIO LINGUA

**CHEVROLET:** Corvette C6 [04>13] Convertible, Corvette C6 [04>13] Coupé, Avalanche [07>13], Silverado 1500 [07>13], Silverado 2500 [07>13], Suburban [07>13], Tahoe [07>14].

**HUMMER:** H2 [03>].

**RENAULT:** Captur II [20>], Clio V [19>] (XJA).

### CODIFICA CHIAVI

**FERRARI:** 612 Scaglietti [04>07] (F137), 612 Scaglietti [07>11] (F137 MY).

**HUMMER:** H2 [03>].

**MASERATI:** Quattroporte [04>07] (M139), Quattroporte [07>12] (M139 EV07).

**SSANGYONG:** Actyon [05>12] (C100), Actyon [12>17] Sports II (Q150), Korando [12>] Sports (Q150), Kyron

Mercato  
EUROPA

Mercato  
NORD AMERICA

Mercato  
BRASILE

Mercato  
INDIA

[05>14] (D100), Rexton (W) [13>17] (Y290), Rodius [13>] (A149), Stavic [13>] (A150).

## FAST FIT

**CHEVROLET:** Corvette C6 [04>13] Convertible, Corvette C6 [04>13] Coupé.

**PORSCHE:** 911, 911[93>00] (993), 918, 918 Spyder [13>15], Boxster, Cayenne, Cayenne [07>10] (9PA/957), Cayenne [10>17] (92A/958), Cayman, Macan, Macan [14>] (95B), Panamera [09>16] (970).

**AUDI:** A1 [11>18] (8X1/8XF), A1 [12>18] (8XA/8XK) Sportback, A1 [19>] (GBA) Sportback, A3, A4 [15>] (8W2), A4 [15>] (8W5) Avant, A4 [16>] (8WH) Avant Allroad, A5 [16>] (F53) Coupé, A5 [16>] (F57) Cabrio, A5 [16>] (F5A) Sportback, A6 [18>] (4K2), A6 [18>] (4K5) Avant, A7 [18>] (4KA) Sportback, A8 [18>] (4N2), A8 [18>] (4N8) L, E-Tron [19>] (GE), Q5 [17>] (FY), Q7 [15>] (4MB), Q8 [18>] (4MN), RS3, RS4 [17>] (8W5) Avant, RS5 [17>] (F53) Coupé, S3, S4 [16>] (8W2), S4 [16>] (8W5) Avant, S5 [16>] (F53) Coupé, S5 [16>] (F57) Cabrio, S5 [16>] (F5A) Sportback, S6 [19>] (4K2), S6 [19>] (4K5) Avant, S7 [19>] (4KA) Sportback, SQ5 [17>] (FY), SQ7 [16>] (4MB).

**CHEVROLET:** Avalanche [07>13], Aveo, Camaro, Caprice, Cobalt, Cruze, Equinox, Impala, Malibu, Orlando, Silverado, Silverado 1500 [07>13], Silverado 2500[99>07], Silverado 2500 [07>13], Silverado 2500 [14>19], Sonic, Suburban, Suburban [07>13], Tahoe, Tahoe [07>14], Tracker, Traverse, Trax, Volt.

**FERRARI:** 458 [09>14] (F142) Italia, 458 [11>14] (F142) Spider, 458 [13>15] (F142) Speciale, 458 [13>15] (F142) Speciale A, 488 [15>] (F142M) GTB, 488 [15>] (F142M) Spider, FF [11>15] (F151), GTC4Lusso[16>] (F151M), GTC4Lusso T [17>] (F151G), LaFerrari[13>] (F150), LaFerrari Aperta [16>] (F150).

**FIAT:** 500 [07>] (312), 500C [09>] (312), 500L [12>] (330), 500L [13>] (334) Living, Doblò [06>09] (119), Doblò [15>] (152) Facelift, Panda [12>] (319), Panda [14>] (319) Cross, Punto [12>18] (199).

**FORD:** C-Max, Crown, Edge II [14>18] (CD539), Edge II [18>] (CD539) Facelift, Escape, Escape III [12>17] (C520), Escape III [17>19] (C520) Facelift, Expedition, Expedition III[14>17] (U324) Facelift, Expedition III EL/MAX [14>17] (U354) Facelift, Expedition IV[17>] (U553), Expedition IV MAX [17>] (U553), Explorer, Explorer V [10>15] (U502), Explorer V [15>19] (U502) Facelift, F150, F150 [14>] (P552), Flex [08>12] (D471), Flex [13>] (D471) Facelift, Focus, Fusion, Fusion [13>] (CD391) Sedan, Galaxy III [15>] (CD390), Kuga II [13>17] (C520), Kuga II [17>19] (C520) Facelift, Maverick, Mondeo V [15>] (CD391), Mondeo V [15>] (CD391) Turnier, Mustang, Mustang VI [15>] (S550) Cabrio, Mustang VI [15>] (S550) Coupé, Ranger, Ranger [12>14] (P375), S-Max II [15>] (CD539), Taurus VI [09>12], Taurus VI [12>19] Facelift, Tourneo, Tourneo Connect [13>] (V408), Tourneo Custom [13>] (V362).

**HUMMER:** H2 [03>].

**HYUNDAI:** Azera [06>11] (TG), Centennial [00>06] (LZ), Coupé [01>09] (GK), Grandeur[99>05] (XG), Grandeur [05>11] (TG), Ioniq [17>] (AE) EV, Ioniq [17>] (AE) Hybrid, Ioniq [17>] (AE) Plug-in Hybrid, Santa Fe[06>12] (CM), Sonata IV [98>05] (EF).

**JAGUAR:** F-Pace, F-Pace [18>] (X761), F-Type [13>] (X152) Cabrio, F-Type [13>] (X152) Coupé, I-Pace, I-Pace [18>] (X590), S-Type, S-Type [98>08] (X200), XE, XE [18>] (X760) Sedan, XF, XF[08>15] (X250) Sedan, XF[09>15]

Novità DASHBOARD

Copertura Marche

Link

(X250) Sedan R, XF [13>15] (X250) Sedan R-S, XF [13>15] (X250) Sportbrake R-S, XF [18>] (X260) Sedan, XF [18>] (X260) Sedan S, XF [18>] (X260) Sportbrake, XF [18>] (X260) Sportbrake S, XJ, XJ [10>] (X351) Sedan, XJ [13>] (X351) Sedan R, XK [06>14] (X150) Cabrio, XK [06>14] (X150) Cabrio R, XK [06>14] (X150) Coupé, XK [06>14] (X150) Coupé R.

**JEEP:** Cherokee, Cherokee[88>01] ( XJ), Cherokee [01>07] (KJ), Grand, Grand Cherokee[98>04] (WJ), Grand Cherokee [00>04] (WG), Liberty [00>07] (KJ), Wrangler, Wrangler[97>06] (TJ).

**KIA:** Niro [17>] (DE) Hybrid, Niro [18>] (DE) Plug-in Hybrid, Opirus [03>10] (LD/GH), Sorento III [15>] (UM).

**LAND ROVER:** Discovery IV [09>16] (L319), Discovery Sport [20>] (L550), Discovery V [17>] (L462), Range Rover Evoque [19>] (L551), Range Rover III [09>12] (L322) Facelift, Range Rover IV [13>16] (L405), Range Rover IV [17>] (L405), Range Rover Sport I [09>13] (L320) Facelift, Range Rover Sport II [14>16] (L494), Range Rover Sport II [17>] (L494), Range Rover Velar [17>] (L560).

**MASERATI:** Coupé, Ghibli[13>] (M157), Ghibli Diesel [13>] (M157), Ghibli S[13>] (M157), Ghibli S Q4 [13>] (M157), GranTurismo, Levante, Levante[16>] (M161), Levante Diesel [16>] (M161), Levante GTS [18>] (M161), Levante S [16>] (M161), Levante Trofeo [18>] (M161), Quattroporte, Quattroporte[13>] (M156), Quattroporte Diesel [13>] (M156), Quattroporte GTS [13>] (M156), Quattroporte S[13>] (M156), Quattroporte S Q4 [13>] (M156), Spyder.

**MAZDA:** BT-50 [11>15] (UP).

**MERCEDES-BENZ:** A [18>] (177), A [18>] (177) L Sedan, A [18>] (177) Sedan, B, B [19>] (247), C, C [14>] (205), C [14>] (205) L, C [14>] (205) T, C [15>] (205) Coupé, C [16>] (205) Cabrio, Citan, Citan [13>] (415), CLA, CLA [19>] (118), CLA [19>] (118) Shooting Brake, E, G, G[92>] (461), GLB [19>] (247), GLC [15>] (253), GLC [16>] (253) Coupé, GLC [18>] (253) L, GLE, GLS, Metris, Metris [14>] (447), S [13>] (222), S [13>] (222) L, S [14>] (217) Coupé, S [15>] (222) Maybach, S [16>] (217) Cabrio, V / Viano [03>14] (639), V [14>] (447), Vito [03>14] (639), Vito [14>] (447) Tourer.

**MINI:** Mini(R50) [01>06] Cooper, Mini(R50) [01>06] One, Mini(R50) [01>06] One de luxe, Mini(R52) [04>09] Cabrio Cooper, Mini(R52) [04>09] Cabrio Cooper S, Mini(R52) [04>09] Cabrio John Cooper Works, Mini(R52) [04>09] Cabrio One, Mini(R53) [02>06] Cooper S, Mini(R53) [03>06] John Cooper Works.

**MITSUBISHI:** L 200 [15>] (KJ/KK/KL/KP).

**OPEL:** Ampera [12>16], Astra-J [09>15], Astra-J [09>15] Station Wagon, Astra-J [12>15] Sedan, Cascada [13>], Combo-D, Combo-D Tour [12>17], Insignia-A [08>13] Hatchback, Insignia-A [08>13] Sedan, Insignia-A [08>13] Station Wagon, Insignia-A [13>16] Hatchback Facelift, Insignia-A [13>16] Sedan Facelift, Insignia-A [13>16] Station Wagon Facelift, Insignia-A [14>16] Country Tourer, Insignia-B [17>] Country Tourer, Insignia-B [17>] Grand Sport, Insignia-B [17>] Sports Tourer, Mokka[12>16], Mokka X [16>], Zafira-C [12>] Tourer.

**PORSCHE:** Cayenne, Cayenne [07>10] (9PA/957), Cayenne [10>17] (92A/958).

**RENAULT:** Captur, Captur I [13>19] (X87/J5), Captur II [20>], Clio, Clio V [19>] (XJA), Grand Scenic IV [17>] (R9), Kadjar [15>] (XFE), Megane IV [16>] (B9A) Hatchback, Megane IV [16>] (B9A) Sedan, Megane IV [16>] (K9A)

Mercato  
EUROPA

Mercato  
NORD AMERICA

Mercato  
BRASILE

Mercato  
INDIA

Grandtour, Scenic IV [16>] (J9), Talisman [15>] (LP), Talisman [16>] (KP) Grandtour, Zoe, Zoe II [19>].

**SKODA:** Octavia [04>13] (1Z3), Octavia [04>13] (1Z5) Kombi, Superb B6 [08>15] (3T4), Superb B6 [09>15] (3T5) Kombi, Yeti [09>17] (5L7).

**SSANGYONG:** Korando [12>] Sports (Q150), Kyron [05>14] (D100), Rexton (W) [13>17] (Y290), Rodius [13>] (A149), Stavic [13>] (A150).

**SUZUKI:** Jimny [18>] (A6G), Spacia [17>].

**VOLKSWAGEN:** Caddy [10>15] (2C).

## GOMMISTI

**CHEVROLET:** Corvette C6 [04>13] Convertible, Corvette C6 [04>13] Coupé, Corvette C7 Stingray [14>] Convertible, Corvette C7 Stingray [14>] Coupé, Corvette C7 Z06 [14>] Convertible, Corvette C7 Z06 [14>] Coupé.

**PORSCHE:** 911 [12>19] (991), 918 Spyder [13>15], Boxster [12>16] (981), Cayenne [10>17] (92A/958), Cayman [13>16] (981), Macan [14>] (95B).

**AUDI:** A3 [03>13] (8P1), A3 [03>13] (8PA) Sportback, A3 [08>14] (8P7) Cabrio, RS3 [11>14] (8PA) Sportback, S3 [06>13] (8P1), S3 [06>13] (8PA) Sportback

**CHEVROLET:** Aveo III [11>] (T300) Hatchback, Aveo III [11>] (T300) Sedan, Camaro [10>15] Cabrio, Camaro [10>15] Coupé, Camaro [16>] Cabrio, Camaro [16>] Coupé, Caprice [12>17], Cobalt [13>], Cruze [09>15] (J300) Hatchback, Cruze [09>15] (J300) Sedan, Cruze [09>15] (J300) Wagon, Equinox [10>17], Impala [14>], Malibu [12>16], Malibu [16>], Orlando [11>] (J309), Silverado 1500 [14>19], Silverado 2500 [14>19], Sonic [12>] (T300), Suburban [14>], Tahoe [15>], Tracker [13>], Traverse [14>17], Traverse [18>], Trax [13>], Volt [11>15].

**FERRARI:** 458 [09>14] (F142) Italia, 458 [11>14] (F142) Spider, 458 [13>15] (F142) Speciale, 458 [13>15] (F142) Speciale A, 488 [15>] (F142M) GTB, 488 [15>] (F142M) Spider, FF [11>15] (F151), GTC4Lusso[16>] (F151M), GTC4Lusso T [17>] (F151G), LaFerrari[13>] (F150), LaFerrari Aperta [16>] (F150).

**FORD:** C-Max [12>18] (C344) Hybrid, Crown Victoria [98>12] (EN114), Escape I [01>07] (U204), Escape II [07>12] (U377), Escape III [12>17] (C520), Escape III [17>19] (C520) Facelift, Expedition II [03>06] (U222), Expedition III[06>14] (U324), Expedition III EL/MAX [06>14] (U354), Explorer III [01>05] (U152), Explorer IV [05>10] (U251), Explorer Sport Trac [06>10] (U251), F150 [03>08] (P221), Focus III [11>14] (C346) EV, Fusion [05>12] (CD338) Sedan, Maverick [00>07] (U204), Mustang V [10>14] (S197) Facelift Cabrio, Mustang V [10>14] (S197) Facelift Coupé, Mustang VI [15>] (S550) Cabrio, Mustang VI [15>] (S550) Coupé, Ranger [12>14] (P375), Tourneo Connect [13>] (V408).

**HONDA:** Accord IX [13>17] (CT/CR) Coupé, Accord IX [13>17] (CT/CR) Sedan, Accord IX [14>15] (CT/CR) Hybrid, Accord X [18>] (CV) Hybrid, Accord X [18>] (CV) Sedan, City VI [13>], Civic IX [12>17] (FB/FG) Hatchback, Civic IX [12>17] (FB/FG) Hatchback Hybrid, Civic IX [14>18] (FB/FG) Wagon, Civic X [17>] (FC/FK) Coupé, Civic X [17>] (FC/FK) Hatchback, Civic X [17>] (FC/FK) Sedan, Crosstour [10>15], CR-V [12>18] (RM), CR-V [17>] (RW/RT),

Novità DASHBOARD

Copertura Marche

Link

CR-Z [10>16] (ZF), Fit [14>] (GK), HR-V [15>] (RU), Insight [09>14] (ZE2), Jazz [15>] (GK), MDX [13>] (YD3), Mobilio [14>] (2NH), N-Box [12>16] (JF), NSX [16>] (NC), Odyssey[08>13] (RB3/RB4), Odyssey[14>] (RC1/RC2), Odyssey [11>17] (RL5), Odyssey [18>] (RL6), Pilot [09>15] (YF), Pilot [16>] (YF), Ridgeline [06>15] (YK), Ridgeline [16>] (YK), Spirior [09>15], Vezel [13>] (RU).

**HYUNDAI:** Azera [06>11] (TG), Centennial [00>06] (LZ), Coupé [01>09] (GK), Grandeur[99>05] (XG), Grandeur [05>11] (TG), Ioniq [17>] (AE) EV, Ioniq [17>] (AE) Hybrid, Ioniq [17>] (AE) Plug-in Hybrid, Santa Fe[06>12] (CM), Sonata IV [98>05] (EF).

**JAGUAR:** F-Pace [18>] (X761), I-Pace [18>] (X590), S-Type [98>08] (X200), XE [18>] (X760) Sedan, XF [18>] (X260) Sedan, XF [18>] (X260) Sedan S, XF [18>] (X260) Sportbrake, XF [18>] (X260) Sportbrake S, XJ [03>10] (X350/X358) Sedan, XJ [03>10] (X350/X358) Sedan R.

**JEEP:** Cherokee [14>] (KL), Grand Cherokee [13>] (WK2) Facelift, Wrangler [18>] (JL).

**KIA:** Niro [17>] (DE) Hybrid, Niro [18>] (DE) Plug-in Hybrid, Opirus [03>10] (LD/GH), Sorento III [15>] (UM).

**LAND ROVER:** Discovery Sport [20>] (L550), Discovery V [17>] (L462), Range Rover Evoque [19>] (L551), Range Rover IV [17>] (L405), Range Rover Sport II [17>] (L494), Range Rover Velar [17>] (L560).

**MASERATI:** Coupé[01>07] (M138), Coupé GranSport [05>07] (M138), GranTurismo [07>] (M145), GranTurismo [10>] (M145) Convertible, Levante[16>] (M161), Levante Diesel [16>] (M161), Levante GTS [18>] (M161), Levante S [16>] (M161), Levante Trofeo [18>] (M161), Quattroporte[07>12] (M139 EV07), Spyder[01>07] (M138), Spyder GranSport [05>07] (M138).

**MAZDA:** BT-50 [11>15] (UP), Tribute [00>07] (U204), Tribute [08>11] (U377).

**MERCEDES-BENZ:** A [18>] (177), A [18>] (177) L Sedan, A [18>] (177) Sedan, B [19>] (247), C [14>] (205), C [14>] (205) L, C [14>] (205) T, C [15>] (205) Coupé, C [16>] (205) Cabrio, Citan [13>] (415), CLA [19>] (118), CLA [19>] (118) Shooting Brake, E [16>] (213), E [16>] (213) L, E [16>] (213) T, E [17>] (238) Cabrio, E [17>] (238) Coupé, G [18>] (463) T L, GLB [19>] (247), GLC [15>] (253), GLC [16>] (253) Coupé, GLC [18>] (253) L, GLE [19>] (167), GLE [20>] (167) Coupé, GLS [19>] (167), GLS [20>] (167) Maybach, Metris [14>] (447), V / Viano [03>14] (639), V [14>] (447), Vito [03>14] (639), Vito [14>] (447) Tourer.

**OPEL:** Ampera [12>16], Astra-J [09>15], Astra-J [09>15] Station Wagon, Astra-J [12>15] Sedan, Cascada [13>], Combo-D, Combo-D Tour [12>17], Insignia-A [08>13] Hatchback, Insignia-A [08>13] Sedan, Insignia-A [08>13] Station Wagon, Insignia-A [13>16] Hatchback Facelift, Insignia-A [13>16] Sedan Facelift, Insignia-A [13>16] Station Wagon Facelift, Insignia-A [14>16] Country Tourer, Insignia-B [17>] Country Tourer, Insignia-B [17>] Grand Sport, Insignia-B [17>] Sports Tourer, Mokka[12>16], Mokka X [16>], Zafira-C [12>] Tourer.

**PORSCHE:** Cayenne [10>17] (92A/958).

**RENAULT:** Captur, Captur II [20>], Clio, Clio V [19>] (XJA), Zoe II [19>].

**SKODA:** Octavia [04>13] (1Z3), Octavia [04>13] (1Z5) Kombi, Superb B6 [08>15] (3T4), Superb B6 [09>15] (3T5) Kombi, Yeti [09>17] (5L7).

Mercato  
EUROPA

Mercato  
NORD AMERICA

Mercato  
BRASILE

Mercato  
INDIA

**SSANGYONG:** Korando [11>19] (C200), Musso [18>] (Q200), Rexton (W) [13>17] (Y290), Rodius [13>] (A149), Stavic [13>] (A150).

**SUZUKI:** Jimny [18>] (A6G), Spacia [17>].

**VOLKSWAGEN:** Caddy [04>10] (2K), Caddy [10>15] (2C), Golf VI [08>13] (5K1), Golf VI [09>13] (AJ5) Variant, Golf VI [09>14] (521) Plus, Jetta [10>18] (162), Scirocco [08>17] (137/138), Touran [06>10] (1T2) Facelift.

### PROGRAMMAZIONE MODALITÀ TRASPORTO

**PORSCHE:** Panamera [09>16] (970).

**BMW:** 5[95>04] (E39), 5[95>04] (E39) Touring, 7[92>02] (E38).

**FERRARI:** 458 [09>14] (F142) Italia, 458 [11>14] (F142) Spider, California[09>12] (F149), California 30 [12>14] (F149), FF [11>15] (F151).

**MASERATI:** Ghibli[13>] (M157), Ghibli Diesel [13>] (M157), Ghibli S[13>] (M157), Ghibli S Q4 [13>] (M157), Levante, Levante[16>] (M161), Levante Diesel [16>] (M161), Levante GTS [18>] (M161), Levante S [16>] (M161), Levante Trofeo [18>] (M161), Quattroporte[13>] (M156), Quattroporte Diesel [13>] (M156), Quattroporte GTS [13>] (M156), Quattroporte S[13>] (M156), Quattroporte S Q4 [13>] (M156).

### RIGENERAZIONE FILTRO PARTICOLATO

**AUDI:** A1 [19>] (GBA) Sportback.

**FIAT:** 500 [07>] (312), 500C [09>] (312), 500L [12>] (330), 500L [13>] (334) Living, Doblò [06>09] (119), Doblò [15>] (152) Facelift, Panda [12>] (319), Panda [14>] (319) Cross, Punto [12>18] (199).

**MAZDA:** BT-50 [11>15] (UP).

**MERCEDES-BENZ:** A [18>] (177), A [18>] (177) L Sedan, A [18>] (177) Sedan, B [19>] (247), C [14>] (205), C [14>] (205) L, C [14>] (205) T, C [15>] (205) Coupé, C [16>] (205) Cabrio, CLA [19>] (118), CLA [19>] (118) Shooting Brake, GLB [19>] (247), GLC [15>] (253), GLC [16>] (253) Coupé, GLC [18>] (253) L.

**RENAULT:** Captur, Captur I [13>19] (X87/J5), Captur II [20>], Clio, Clio V [19>] (XJA), Grand Scenic IV [17>] (R9), Kadjar [15>] (XFE), Megane IV [16>] (B9A) Hatchback, Megane IV [16>] (B9A) Sedan, Megane IV [16>] (K9A) Grandtour, Scenic IV [16>] (J9), Talisman [15>] (LP), Talisman [16>] (KP) Grandtour.

### SOSTITUZIONE BATTERIA

**MERCEDES-BENZ:** A [18>] (177), A [18>] (177) L Sedan, A [18>] (177) Sedan, B [19>] (247), C [14>] (205), C [14>] (205) L, C [14>] (205) T, C [15>] (205) Coupé, C [16>] (205) Cabrio, CLA [19>] (118), CLA [19>] (118) Shooting Brake, GLB [19>] (247), GLC [15>] (253), GLC [16>] (253) Coupé, GLC [18>] (253) L.

Novità DASHBOARD

Copertura Marche

Link

**VEICOLI ELETTRICI**

**FORD:** Fusion [05>12] (CD338) Sedan.

**KIA:** Niro [19>].



Mercato  
EUROPA

Mercato  
NORD AMERICA

Mercato  
BRASILE

Mercato  
INDIA

## Novità DASHBOARD

### Mercato Europa

#### ABS

**ACURA:** CDX [16>], CL [96>03] (YA), CSX [06>11] (FD), EL [96>05] (MB/ES), ILX [13>] (DE), MDX [01>13] (YD), MDX [14>] (YD), NSX [16>] (NC), RDX [06>12] (TB), RDX [13>18] (TB), RDX [19>] (TC), RL [96>04] (KA), RL [04>12] (KB), RLX [13>] (KC), RSX [02>10] (DC), TL [95>09] (UA), TL [09>13] (UA), TLX [14>] (UB), TLX-L [17>] (UB), TSX [03>08] (CL), TSX [09>14] (CU), ZDX [10>13] (YB).AUDI: A4 [15>] (8W2), A4 [15>] (8W5) Avant, A4 [16>] (8WH) Avant Allroad, A5 [16>] (F53) Coupé, A5 [16>] (F57) Cabrio, A5 [16>] (F5A) Sportback, A6 [18>] (4K2), A6 [18>] (4K5) Avant, A7 [18>] (4KA) Sportback, A8 [18>] (4N2), A8 [18>] (4N8) L, E-Tron [19>] (GE), Q5 [17>] (FY), Q7 [15>] (4MB), Q8 [18>] (4MN), RS4 [17>] (8W5) Avant, RS5 [17>] (F53) Coupé, S4 [16>] (8W2), S4 [16>] (8W5) Avant, S5 [16>] (F53) Coupé, S5 [16>] (F57) Cabrio, S5 [16>] (F5A) Sportback, S6 [19>] (4K2), S6 [19>] (4K5) Avant, S7 [19>] (4KA) Sportback, SQ5 [17>] (FY), SQ7 [16>] (4MB).

**BENTLEY:** Bentayga [15>].

**CHANGAN:** Alsvin V3 [11>], Benben Love [10>], Benben Mini [10>], CS35 [12>], CX20 [10>], CX30 [10>], E30 EV [12>], Zhixiang [08>].

**CITROËN:** Berlingo [08>18] (B9), Berlingo [18>] (K9), C 1 [05>13] (B0), C 3 [16>] (B61), C 3 Aircross [17>] (A88), C 4 Cactus [14>] (E3/F3), C 5 Aircross [18>] (C84), SpaceTourer [16>] (K0).

**FAW:** Hongqi HQ3 [05>].

**FERRARI:** 599 GTB Fiorano [06>12] (F141), 599 GTO [10>12] (F141).

**GREAT WALL:** Cowry [07>15], Voleex C10 [10>13], Voleex C20R [13>], Voleex C30 [10>], Voleex V80 [07>15].

**HONDA:** Accord VI [97>03] (CG) Coupé, Accord VI [98>03] (CG) Hatchback, Accord VI [98>03] (CG) Sedan, Accord VII [03>08] (CL) Sedan, Accord VII [03>08] (CL) Tourer, Accord VIII [08>13] (CS) Coupé, Accord VIII [08>13] (CU) Tourer, Accord VIII [08>13] (CU/CP) Sedan, Accord IX [13>17] (CT/CR) Coupé, Accord IX [13>17] (CT/CR) Sedan, Accord IX [14>15] (CT/CR) Hybrid, Accord X [18>] (CV) Hybrid, Accord X [18>] (CV) Sedan, Acty Van [99>], Airwave [05>10] (GJ), Amaze [13>], Ascot [94>97] (CE), Avancier [00>03] (TA), Ballade [11>], Brio [11>], BR-V [16>] (DG1), Capa [98>02] (GA), City III [98>02], City IV [02>08], City V [08>], City VI [13>], Civic VI [95>00] Fastback, Civic VI [99>01] Aerodeck, Civic VII [00>05] (ES) Hybrid, Civic VII [00>05] (EU) Hatchback, Civic VII [00>05] (EU) Sedan, Civic VII [01>05] (EM) Coupé, Civic VII [03>05] (ET) Sedan, Civic VIII [06>12] (FA/FD) Hybrid, Civic VIII [06>12] (FK/FN) Hatchback, Civic VIII [06>12] (FK/FN) Sedan, Civic IX [12>17] (FB/FG) Hatchback, Civic IX [12>17] (FB/FG) Hatchback Hybrid, Civic IX [14>18] (FB/FG) Wagon, Civic X [17>] (FC/FK) Coupé, Civic X [17>] (FC/FK) Hatchback, Civic X [17>] (FC/FK) Sedan, Crossroad [06>11] (RT), Crosstour [10>15], CR-V [95>07] (RD),

Novità DASHBOARD

Copertura Marche

Link

CR-V [07>11] (RE), CR-V [12>18] (RM), CR-V [17>] (RW/RT), CR-X Del Sol [92>98] (EG), CR-Z [10>16] (ZF), Domani [93>97] (MA), Domani [97>00] (MB), Edix [04>09] (BE), Element [03>11] (YH), Elysion [04>14] (RR), Everus [11>15] (S1), Fit [03>14] (GD/GE), Fit [14>] (GK), Fit Shuttle [11>15] (GG/GP), Freed [08>16] (GB), Freed [12>16] (GP) Hybrid, Freed Spike [11>16] (GB), Freed Spike [12>16] (GP) Hybrid, FR-V [04>09] (BE), HR-V [98>05] (GH), HR-V [15>] (RU), Insight [00>06] (ZE1), Insight [09>14] (ZE2), Inspire [95>98] (UA1,UA3), Inspire [98>03] (UA4,UA5), Inspire [07>12] (CP3), Integra [02>07] (DC5), Integra [93>01] (DC1), Integra SJ [96>00] (EK3), Jazz [02>08] (GD), Jazz [08>14] (GE), Jazz [15>] (GK), LaGreat [99>04] (RL), Legend [96>04] (KA) Sedan, Legend [04>12] (KB) Sedan, Life [97>98] (JA), Life [98>08] (JB), Life [08>14] (JC), Logo [97>01] (GA), MDX [01>06] (YD1), MDX [06>12] (YD2), MDX [13>] (YD3), Mobilio [02>09] (GB), Mobilio [14>] (2NH), Mobilio Spike [03>08] (GK), MR-V [02>08] (YF), N-Box [12>16] (JF), NSX [92>05] (NA), NSX [16>] (NC), Odyssey [94>03] (RA), Odyssey [04>08] (RB1/RB2), Odyssey [08>13] (RB3/RB4), Odyssey [14>] (RC1/RC2), Odyssey [05>10] (RL3/RL4), Odyssey [11>17] (RL5), Odyssey [18>] (RL6), Orthia [96>02] (EL), Partner [96>06] (EY), Partner [06>10] (GJ), Pilot [02>08] (YF), Pilot [09>15] (YF), Pilot [16>] (YF), Prelude [91>02] (BB), Rafaga [93>97] (CE), Ridgeline [06>15] (YK), Ridgeline [16>] (YK), S2000 [99>09] (AP), Saber [95>98] (UA), Saber [98>03] (UA), Shuttle [95>99], S-MX [96>02] (RH), Spirior [09>15], Step WGN [01>05] (RF), Step WGN [06>09] (RG), Step WGN [10>15] (RK), Stream [01>06] (RN), Stream [06>14] (RN), That's [02>08] (JD), Today [93>98] (JA/JW), Torneo [97>02] (CL/CF), Vamos [99>] (HM), Vezel [13>] (RU), Vigor [92>95] (CB/CC), Z [98>02] (PA), Zest [06>12] (JE).

**JAC MOTORS:** iEV4 [14>], J4/A30 [14>], S3 [14>], T6 [15>] Pick-Up.

**LAMBORGHINI:** Urus [18>].

**LEXUS:** ES (V1/V2/V3) 300 [91>03], ES (V3) 330 [01>06], GS (S1) 300 [93>05], GS (S1) 430 [00>05], IS (E1) 200 [99>05] Sedan, IS (E1) 200 [99>05] Wagon, IS (E1) 300 [01>05] Sedan, IS (E1) 300 [01>05] Wagon, LS (F1/F2) 400 [91>00], LS (F3) 430 [01>06], LX (J1) 470 [98>07], RX (U1) 300 [97>06], RX (U3) 300 [03>06] Wagon, RX (U3) 330 [03>09], RX (U3) 350 [06>09], SC (Z4) 430 [01>10].

**MASERATI:** Quattroporte [04>07] (M139), Quattroporte [07>12] (M139 EV07).

**PEUGEOT:** 107 [05>13] (B0), 3008 [16>] (P84), 308 [13>] (T9), 308 [14>] (T9) Station Wagon, 408 [15>] (T93), 5008 [17>] (P87), Partner Tepee [08>18] (B9), Rifter [18>] (K9), Traveller [16>] (K0).

**SCION:** TC [04>10] (T10), XA [03>06] (P61), XB [03>06] (P31).

**SUZUKI:** Jimny [98>18] (SN), SX4 S-Cross [13>16] (AKK), SX4 S-Cross [16>] (AKK) Facelift.

**TOYOTA:** 4-Runner [89>02] (N18), 4-Runner [02>09] (N21), Alphard [02>08] (H10), Auris [06>12] (E15), Avalon [00>05] (X20), Avalon [05>12] (X30), Avensis [97>03] (T22) Liftback, Avensis [97>03] (T22) Sedan, Avensis [97>03] (T22) Wagon, Avensis [01>03] (M20) Verso, Avensis [03>08] (T25) Liftback, Avensis [03>08] (T25) Sedan, Avensis [03>08] (T25) Wagon, Aygo [05>13] (B10), Camry [86>01] (V2), Camry [01>06] (XV3), Celica [99>06] (T23), Century [98>16] (G50) Sedan, Corolla [96>02] (E11), Corolla [97>01] (E11) Hatchback, Corolla [97>01] (E11) Liftback, Corolla [97>01] (E11) Sedan, Corolla [97>01] (E11) Wagon, Corolla [00>06] (E12), Corolla [01>06]

Mercato  
EUROPA

Mercato  
NORD AMERICA

Mercato  
BRASILE

Mercato  
INDIA

(E12) Hatchback, Corolla [01>06] (E12) Sedan, Corolla [01>06] (E12) Verso, Corolla [01>06] (E12) Wagon, Corolla [04>09] (R10) Verso, Corolla Altis [06>13] (E14), FJ Cruiser [07>14] (J1), Fortuner [04>15] (N5/N6), Highlander [00>07] (U2), Hi-Lux [04>15] Pick-Up, Hi-Lux [04>15] SW4, Innova [04>15] (N4), Ist [02>06] (P6), Kijang Innova [04>15] (N4), Kluger [03>07] (U2), Land Cruiser [96>04] (J9), Land Cruiser [98>02] (J10), Land Cruiser [02>08] (J12), Matrix [02>08] (E13), MR2 [99>05] (W3), Previa [90>06] (R1/R3), Prius [00>09] (NHW), RAV4 [00>05] (A2), Reiz [05>09] (X12), Sequoia I [00>07] (K3/K4), Sienna [97>03] (L1), Sienna [03>10] (L2), Sienna [10>] (L3), Solara [00>09] (V2/V3), Spacio [98>01] (E11), Tacoma [04>15] (N2), Tundra [00>06] (K3/K4), Vios [03>07] (P4), Yaris [99>05] (P1), Yaris [99>05] (P2) Verso.

**VOLKSWAGEN:** Touareg [18>] (CR7).

## AIRBAG

**AUDI:** A1 [11>18] (8X1/8XF), A1 [12>18] (8XA/8XK) Sportback, A3 [12>] (8V1), A3 [12>] (8VA) Sportback, A3 [14>] (8V7) Cabrio, A3 [14>] (8VS) Sedan, A4 [07>15] (8K2), A4 [07>15] (8K5) Avant, A4 [09>15] (8KH) Avant Allroad, A5 [07>16] (8T3) Coupé, A5 [09>16] (8F7) Cabrio, A5 [09>16] (8TA) Sportback, Q2 [16>] (GA), Q3 [11>18] (8UB), Q3 [19>] (F3), Q3 [19>] (F3) Sportback, Q5 [08>16] (8RB/83B), RS3 [15>] (8VA) Sportback, RS3 [17>] (8VS) Sedan, RS4 [13>16] (8K5) Avant, RS5 [10>16] (8T3) Coupé, RS5 [13>16] (8F7) Cabrio, RSQ3 [13>18] (8UB), RSQ3 [19>] (F3), RSQ3 [19>] (F3) Sportback, S1 [13>18] (8XF), S1 [13>18] (8XK) Sportback, S3 [14>] (8V1), S3 [14>] (8V7) Cabrio, S3 [14>] (8VA) Sportback, S3 [14>] (8VS) Sedan, S4 [08>15] (8K2), S4 [08>15] (8K5) Avant, S5 [07>16] (8T3) Coupé, S5 [09>16] (8F7) Cabrio, S5 [09>16] (8TA) Sportback, SQ2 [18>] (GA), SQ5 [13>16] (8RB), TT [14>] (8S3) Coupé, TT [14>] (8S3) S Coupé, TT [14>] (8S9) Roadster, TT [14>] (8S9) S Roadster, TT [16>] (8S3) RS Coupé, TT [16>] (8S9) RS Roadster.

**SEAT:** Ateca [16>] (KH), Leon [12>] (5F1), Leon [12>] (5F5) SC, Leon [14>] (5F8) ST, Leon [14>] (5F88) X-Perience, Tarraco [19>] (KN).

**SKODA:** Octavia [13>] (5E3), Superb B8 [15>] (3V3), Superb B8 [15>] (3V5) Wagon.

**VOLKSWAGEN:** Arteon [17>] (3H7), Golf VII [12>] (5G1), Golf VII [14>] (BA5) Variant, Golf VII [14>] (BE1) EV, Golf VII [15>] (AM1) Sportsvan, Jetta [18>] (BU3), Lamando [15>], Passat B8 [14>] (3G2/CB2), Passat B8 [14>] (3G5/CB5) Variant, Passat B8 [15>] (3G5/CB5) Variant Alltrack, Polo [17>] (AW), T-Cross [19>] (C1), Tiguan [16>] (AD1/BW2), Touran [15>] (5T), T-Roc [17>] (A11).

**VOLVO:** S90 II [16>], V90 II [16>], V90 II [17>] Cross Country, XC60 II [17>], XC90 II [15>]

## CAMBIO AUTOMATICO

**AUDI:** A1 [19>] (GBA) Sportback, A3 [12>] (8V1), A3 [12>] (8VA) Sportback, A3 [14>] (8V7) Cabrio, A3 [14>] (8VS) Sedan, Q2 [16>] (GA), Q3 [19>] (F3), Q3 [19>] (F3) Sportback, RS3 [15>] (8VA) Sportback, RS3 [17>] (8VS) Sedan, RSQ3 [19>] (F3), RSQ3 [19>] (F3) Sportback, S3 [14>] (8V1), S3 [14>] (8V7) Cabrio, S3 [14>] (8VA) Sportback, S3

Novità DASHBOARD

Copertura Marche

Link

[14>] (8VS) Sedan, SQ2 [18>] (GA), TT [14>] (8S3) Coupé, TT [14>] (8S3) S Coupé, TT [14>] (8S9) Roadster, TT [14>] (8S9) S Roadster, TT [16>] (8S3) RS Coupé, TT [16>] (8S9) RS Roadster.

**MERCEDES-BENZ:** A [97>04] (168), A [01>04] (168) L, A [04>12] (169), A [04>12] (169) Coupé, A [12>18] (176), AMG GT [15>] (190) Coupé, AMG GT [17>] (190) Roadster, B [05>11] (245), B [11>19] (246), CLA [13>19] (117), CLA [15>19] (117) Shooting Brake, GLA [13>] (156), SLS [10>14] (197) Coupé, SLS [11>14] (197) Roadster, Vaneo [02>05] (414).

**SEAT:** Arona [17>] (KJ7), Ateca [16>] (KH), Ibiza [15>17] (6P1) Sportcoupé, Ibiza [15>17] (6P5), Ibiza [15>17] (6P8) ST, Ibiza [17>] (6F), Leon [12>] (5F1), Leon [12>] (5F5) SC, Leon [14>] (5F8) ST, Leon [14>] (5F88) X-Perience, Mii [12>] (KF1), Tarraco [19>] (KN), Toledo [12>] (KG3).

**SKODA:** Citigo [12>] (NF1), Fabia [15>] (NJ), Fabia [15>] (NJ) Kombi, Kamiq [19>] (NW4), Karoq [17>] (NU7), Kodiaq [17>] (NS7), Octavia [04>13] (1Z3), Octavia [04>13] (1Z5) Kombi, Octavia [13>] (5E3), Octavia [13>] (5E5) Kombi, Rapid [13>] (NH1) Spaceback, Rapid [13>] (NH3), Scala [19>] (NW1), Superb B8 [15>] (3V3), Superb B8 [15>] (3V5) Wagon, Yeti [09>17] (5L7).

**VOLKSWAGEN:** Arteon [17>] (3H7), Beetle (Maggiolino) [11>] (5C1/5C2), Beetle (Maggiolino) [13>] (5C7/5C8) Cabriolet, Bora [06>13] (1K2), Golf VI [08>13] (5K1), Golf VI [09>14] (521) Plus, Golf VII [12>] (5G1), Golf VII [14>] (BA5) Variant, Golf VII [15>] (AM1) Sportsvan, Jetta [10>18] (162), Jetta [18>] (BU3), Lamando [15>], Passat B8 [14>] (3G2/CB2), Passat B8 [14>] (3G5/CB5) Variant, Passat B8 [15>] (3G5/CB5) Variant Alltrack, Polo [14>17] (6C1), Polo [17>] (AW), Rabbit V [06>14], T-Cross [19>] (C1), Tiguan [16>] (AD1/BW2), Touran [15>] (5T), T-Roc [17>] (A11), Up! [11>] (121/122).

**VOLVO:** S80 I [98>06], S90 II [16>], V60 II [18>], V60 II [19>] Cross Country, V90 II [16>], V90 II [17>] Cross Country, XC40 [17>], XC60 II [17>], XC90 I [03>14], XC90 II [15>].

#### CENTRALINA RILEVAMENTO OSTACOLO LATO DESTRO

**VOLVO:** S60 III [19>], S90 II [16>], V60 II [18>], V60 II [19>] Cross Country, V90 II [16>], V90 II [17>] Cross Country, XC40 [17>], XC60 II [17>], XC90 II [15>].

#### CENTRALINA RILEVAMENTO OSTACOLO LATO SINISTRO

**VOLVO:** S60 III [19>], S90 II [16>], V60 II [18>], V60 II [19>] Cross Country, V90 II [16>], V90 II [17>] Cross Country, XC40 [17>], XC60 II [17>], XC90 II [15>].

#### CLIMATIZZATORE

**VOLVO:** S60 III [19>], S90 II [16>], V60 II [18>], V60 II [19>] Cross Country, V90 II [16>], V90 II [17>] Cross Country, XC60 II [17>], XC90 II [15>].

Mercato  
EUROPA

Mercato  
NORD AMERICA

Mercato  
BRASILE

Mercato  
INDIA

## CONTROLLO DISTANZA

**BMW:** 1 [11>19] (F20), 1 [12>19] (F21), 2 [14>] (F22), 2 [14>] (F23) Cabrio, 2 [15>] (F87) M, 3 [12>18] (F30), 3 [12>19] (F31) Touring, 3 [12>19] (F35) Long, 3 [13>] (F34) Gran Turismo, 3 [14>] (F80) M, 3 [19>] (G20), 3 [19>] (G21) Touring, 4 [14>] (F32) Coupé, 4 [14>] (F33) Cabrio, 4 [14>] (F36) Gran Coupé, 4 [14>] (F82) M Coupé, 4 [14>] (F83) M Cabrio, 5 [09>17] (F07) Gran Turismo, 5 [10>16] (F10), 5 [10>16] (F11) Touring, 5 [17>] (G30), 5 [17>] (G31) Touring, 5 [17>] (G38) Long, 6 [11>] (F06) Gran Coupé, 6 [11>] (F12) Cabrio, 6 [11>] (F13) Coupé, 6 [18>] (G32) Gran Turismo, 7 [08>15] (F01), 7 [08>15] (F02), 7 [10>12] (F04) Hybrid, 7 [15>] (G11), 7 [15>] (G12), 8 [19>] (G14) Cabrio, 8 [19>] (G15) Coupé, 8 [19>] (G16) Gran Coupé, 8 [19>] (F91) M Cabrio, 8 [19>] (F92) M Coupé, i3 [13>] (I01), X1 [15>] (F48), X1 [16>] (F49) Long, X3 [10>17] (F25), X3 [18>] (G01), X3 [18>] (G08) Long, X3 [19>] (F97) M, X4 [14>18] (F26), X4 [18>] (G02), X4 [19>] (F98) M, X5 [13>18] (F15), X5 [15>18] (F85) M, X5 [18>] (G05), X6 [14>] (F16), X6 [15>] (F86) M, X7 [19>] (G07).

**TOYOTA:** Supra [19>] (J29/DB).

## INIEZIONE BENZINA

**VOLVO:** S60 III [19>], S90 II [16>], V60 II [18>], V60 II [19>] Cross Country, V90 II [16>], V90 II [17>] Cross Country, XC40 [17>], XC60 II [17>], XC90 II [15>].

## INIEZIONE DIESEL

**AUDI:** A3 [12>] (8V1), A3 [12>] (8VA) Sportback, A3 [14>] (8V7) Cabrio, A3 [14>] (8VS) Sedan, A4 [07>15] (8K2), A4 [07>15] (8K5) Avant, A4 [09>15] (8KH) Avant Allroad, A5 [07>16] (8T3) Coupé, A5 [09>16] (8F7) Cabrio, A5 [09>16] (8TA) Sportback, Q2 [16>] (GA), Q3 [19>] (F3), Q3 [19>] (F3) Sportback, Q5 [08>16] (8RB/83B), TT [14>] (8S3) Coupé, TT [14>] (8S9) Roadster.

**CHEVROLET:** Cruze [16>] (J400) Hatchback, Cruze [16>] (J400) Sedan, Orlando [11>] (J309), Trax [13>].

**HYUNDAI:** Accent V [11>17] (RB), Creta [15>] (GS/GSR), Grand i10 [14>19] (BA), i20 [08>14] (PB), i30 [12>15] (GD), i30 [12>15] (GD) Kombi, i30 [15>17] (GD) Facelift, i30 [15>17] (GD) Kombi Facelift, ix20 [10>] (JC), Verna [11>17] (RBI), Xcent [14>] (BA).

**KIA:** Cee'd [12>15] (JD), Cee'd [12>15] (JD) Sportswagon, Pro Cee'd [13>15] (JD), Rio [11>17] (UB/QB), Venga [10>] (YN).

**OPEL:** Astra-J [09>15], Astra-J [09>15] Station Wagon, Astra-J [12>15] Sedan, Astra-K [15>], Astra-K [15>] Station Wagon, Cascada [13>], Crossland X [17>], Grandland X [17>], Insignia-A [13>16] Hatchback Facelift, Insignia-A [13>16] Sedan Facelift, Insignia-A [13>16] Station Wagon Facelift, Insignia-B [17>] Country Tourer, Insignia-B [17>] Grand Sport, Insignia-B [17>] Sports Tourer, Meriva-B [10>17], Mokka [12>16], Mokka X [16>], Zafira-C [12>] Tourer.

**SEAT:** Altea [04>15] (5P1), Altea Freetrack [07>15] (5P8), Altea XL [06>15] (5P5), Ateca [16>] (KH), Leon [05>12]

Novità DASHBOARD

Copertura Marche

Link

(1P1), Leon [12>] (5F1), Leon [12>] (5F5) SC, Leon [14>] (5F8) ST, Leon [14>] (5F88) X-Perience, Tarraco [19>] (KN).

**SKODA:** Karoq [17>] (NU7), Kodiaq [17>] (NS7), Octavia [13>] (5E3), Octavia [13>] (5E5) Kombi, Superb B8 [15>] (3V3), Superb B8 [15>] (3V5) Wagon.

**VOLKSWAGEN:** Arteon [17>] (3H7), Golf VII [12>] (5G1), Golf VII [14>] (BA5) Variant, Golf VII [15>] (AM1) Sportsvan, Passat B8 [14>] (3G2/CB2), Passat B8 [14>] (3G5/CB5) Variant, Passat B8 [15>] (3G5/CB5) Variant Alltrack, Tiguan [16>] (AD1/BW2), Touran [15>] (5T).

### SENSORE ANGOLO STERZATA

**VOLVO:** S60 III [19>], S90 II [16>], V60 II [18>], V60 II [19>] Cross Country, V90 II [16>], V90 II [17>] Cross Country, XC40 [17>], XC60 II [17>], XC90 II [15>]

### SISTEMA DI DOSAGGIO DELL'AGENTE RIDUCENTE

**VOLVO:** V60 II [18>], V60 II [19>] Cross Country, XC40 [17>], XC90 II [15>].

### STRUMENTAZIONE

**AUDI:** A4 [15>] (8W2), A4 [15>] (8W5) Avant, A4 [16>] (8WH) Avant Allroad, A5 [16>] (F53) Coupé, A5 [16>] (F57) Cabrio, A5 [16>] (F5A) Sportback, Q5 [17>] (FY), Q7 [15>] (4MB), R8 [15>] (4S3/4SP) Coupé, R8 [16>] (4S9/4SR) Spyder, RS4 [17>] (8W5) Avant, RS5 [17>] (F53) Coupé, S4 [16>] (8W2), S4 [16>] (8W5) Avant, S5 [16>] (F53) Coupé, S5 [16>] (F57) Cabrio, S5 [16>] (F5A) Sportback, SQ5 [17>] (FY), SQ7 [16>] (4MB).

**BENTLEY:** Bentayga [15>].

### TELECAMERA 360°

**VOLVO:** S90 II [16>], V90 II [16>], V90 II [17>] Cross Country, XC60 II [17>], XC90 II [15>].

### TELECAMERA ANTERIORE

**INFINITI:** Q30 [15>] (H15), QX30 [16>] (H15).

### TELECAMERA MULTIFUNZIONE

**AUDI:** A1 [19>] (GBA) Sportback, A3 [12>] (8V1), A3 [12>] (8VA) Sportback, A3 [14>] (8V7) Cabrio, A3 [14>] (8VS) Sedan, A4 [15>] (8W2), A4 [15>] (8W5) Avant, A4 [16>] (8WH) Avant Allroad, A5 [16>] (F53) Coupé, A5 [16>] (F57) Cabrio, A5 [16>] (F5A) Sportback, Q2 [16>] (GA), Q3 [19>] (F3), Q3 [19>] (F3) Sportback, Q5 [17>] (FY), Q7 [15>] (4MB), RS3 [15>] (8VA) Sportback, RS3 [17>] (8VS) Sedan, RS4 [17>] (8W5) Avant, RS5 [17>] (F53) Coupé, RSQ3 [19>] (F3), RSQ3 [19>] (F3) Sportback, S3 [14>] (8V1), S3 [14>] (8V7) Cabrio, S3 [14>] (8VA) Sportback, S3 [14>]

Mercato  
EUROPA

Mercato  
NORD AMERICA

Mercato  
BRASILE

Mercato  
INDIA

(8VS) Sedan, S4 [16>] (8W2), S4 [16>] (8W5) Avant, S5 [16>] (F53) Coupé, S5 [16>] (F57) Cabrio, S5 [16>] (F5A) Sportback, SQ2 [18>] (GA), SQ5 [17>] (FY), SQ7 [16>] (4MB), TT [14>] (8S3) Coupé, TT [14>] (8S3) S Coupé, TT [14>] (8S9) Roadster, TT [14>] (8S9) S Roadster, TT [16>] (8S3) RS Coupé, TT [16>] (8S9) RS Roadster.

**BENTLEY:** Bentayga [15>], Continental [18>] GT, Continental [18>] GTC.

**PORSCHE:** Macan [14>] (95B).

**SEAT:** Alhambra [10>] (710/711), Ateca [16>] (KH), Leon [12>] (5F1), Leon [12>] (5F5) SC, Leon [14>] (5F8) ST, Leon [14>] (5F88) X-Perience, Mii [12>] (KF1), Mii [20>] (KF1) EV, Tarraco [19>] (KN).

**SKODA:** Citigo [12>] (NF1), Citigo [20>] (NF1) EV, Kamiq [19>] (NW4), Karoq [17>] (NU7), Kodiaq [17>] (NS7), Octavia [13>] (5E3), Octavia [13>] (5E5) Kombi, Scala [19>] (NW1), Superb B8 [15>] (3V3), Superb B8 [15>] (3V5) Wagon.

**VOLKSWAGEN:** Arteon [17>] (3H7), Atlas [17>] (CA1), Bora [06>13] (1K2), Eos [11>] (1F8), Golf VI [08>13] (5K1), Golf VI [09>13] (AJ5) Variant, Golf VI [09>14] (521) Plus, Golf VI [11>15] (517) Cabriolet, Golf VII [12>] (5G1), Golf VII [14>] (BA5) Variant, Golf VII [14>] (BE1) EV, Golf VII [15>] (AM1) Sportsvan, Jetta [10>14] (AJ) SportWagen, Jetta [18>] (BU3), Passat B6 [04>10] (3C2), Passat B6 [05>10] (3C5) Variant, Passat B7 [10>14] (362), Passat B7 [10>14] (365) Variant, Passat B7 [12>] NMS (A3/A4), Passat B8 [14>] (3G2/CB2), Passat B8 [14>] (3G5/CB5) Variant, Passat B8 [15>] (3G5/CB5) Variant Alltrack, Passat CC [08>12] (357), Passat CC [12>17] (358) Facelift, Polo [17>] (AW), Rabbit V [06>14], Scirocco [08>17] (137/138), Sharan [10>] (7N1/7N2), T-Cross [19>] (C1), Teramont [17>] (CA1), Tiguan [07>12] (5N1), Tiguan [12>17] (5N2) Facelift, Tiguan [16>] (AD1/BW2), Touran [06>10] (1T2) Facelift, Touran [10>15] (1T3) Facelift, Touran [15>] (5T), T-Roc [17>] (A11), Up! [11>] (121/122), Up! [14>] (121) EV.

## Mercato NORD AMERICA

### ABS

**ACURA:** CL [96>03] (YA), CSX [06>11] (FD), EL [96>05] (MB/ES), ILX [13>] (DE), MDX [01>13] (YD), MDX [14>] (YD), NSX [16>] (NC), RDX [06>12] (TB), RDX [13>18] (TB), RDX [19>] (TC), RL [96>04] (KA), RL [04>12] (KB), RLX [13>] (KC), RSX [02>10] (DC), TL [95>09] (UA), TL [09>13] (UA), TLX [14>] (UB), TSX [03>08] (CL), TSX [09>14] (CU), ZDX [10>13] (YB).

**AUDI:** A4 [15>] (8W2), A4 [15>] (8W5) Avant, A4 [16>] (8WH) Avant Allroad, A5 [16>] (F53) Coupé, A5 [16>] (F57) Cabrio, A5 [16>] (F5A) Sportback, A6 [18>] (4K2), A6 [18>] (4K5) Avant, A7 [18>] (4KA) Sportback, A8 [18>] (4N2), A8 [18>] (4N8) L, ETron [19>] (GE), Q5 [17>] (FY), Q7 [15>] (4MB), Q8 [18>] (4MN), RS4 [17>] (8W5) Avant, RS5 [17>] (F53) Coupé, S4 [16>] (8W2), S4 [16>] (8W5) Avant, S5 [16>] (F53) Coupé, S5 [16>] (F57) Cabrio, S5 [16>] (F5A) Sportback, S6 [19>] (4K2), S6 [19>] (4K5) Avant, S7 [19>] (4KA) Sportback, SQ5 [17>] (FY), SQ7 [16>] (4MB).

**BENTLEY:** Bentayga [15>].

Novità DASHBOARD

Copertura Marche

Link

**FERRARI:** 599 GTB Fiorano [06>12] (F141), 599 GTO [10>12] (F141).

**HONDA:** Accord VI [97>03] (CG) Coupé, Accord VI [98>03] (CG) Hatchback, Accord VI [98>03] (CG) Sedan, Accord VII [03>08] (CL) Sedan, Accord VII [03>08] (CL) Tourer, Accord VIII [08>13] (CS) Coupé, Accord VIII [08>13] (CU) Tourer, Accord VIII [08>13] (CU/CP) Sedan, Accord IX [13>17] (CT/CR) Coupé, Accord IX [13>17] (CT/CR) Sedan, Accord IX [14>15] (CT/CR) Hybrid, Accord X [18>] (CV) Hybrid, Accord X [18>] (CV) Sedan, Civic VI [95>00] Fastback, Civic VI [99>01] Aerodeck, Civic VII [00>05] (EU) Hatchback, Civic VII [00>05] (EU) Sedan, Civic VII [01>05] (EM) Coupé, Civic VII [03>05] (ET) Sedan, Civic VIII [06>12] (FA/FD) Hybrid, Civic VIII [06>12] (FK/FN) Hatchback, Civic VIII [06>12] (FK/FN) Sedan, Civic IX [12>17] (FB/FG) Hatchback, Civic IX [12>17] (FB/FG) Hatchback Hybrid, Civic IX [14>18] (FB/FG) Wagon, Civic X [17>] (FC/FK) Coupé, Civic X [17>] (FC/FK) Hatchback, Civic X [17>] (FC/FK) Sedan, Crosstour [10>15], CRV [95>07] (RD), CRV [07>11] (RE), CRV [12>18] (RM), CRV [17>] (RW/RT), CRZ [10>16] (ZF), Element [03>11] (YH), Fit [03>14] (GD/GE), Fit [14>] (GK), HRV [98>05] (GH), HRV [15>] (RU), Insight [00>06] (ZE1), Insight [09>14] (ZE2), NSX [92>05] (NA), Odyssey [94>03] (RA), Odyssey [05>10] (RL3/RL4), Odyssey [11>17] (RL5), Odyssey [18>] (RL6), Pilot [02>08] (YF), Pilot [09>15] (YF), Pilot [16>] (YF), Prelude [91>02] (BB), Ridgeline [06>15] (YK), Ridgeline [16>] (YK), S2000 [99>09] (AP).

**LAMBORGHINI:** Urus [18>].

**LEXUS:** ES 300 | NA, ES 330 | NA, GS 300 | NA, GS 400 | NA, GS 430 | NA, GX 470 | NA, IS 300 | NA, LS 400 | NA, LS 430 | NA, LX 470 | NA, RX 300 | NA, RX 330 | NA, RX 350 | NA, SC 430 | NA.

**MASERATI:** Quattroporte [04>07] (M139), Quattroporte [07>12] (M139 EV07).

**SCION:** TC [04>10] (T10), XA [03>06] (P61), XB [03>06] (P31).

**TOYOTA:** 4Runner [89>02] (N18), 4Runner [02>09] (N21), Avalon [00>05] (X20), Camry [86>01] (V2), Camry [01>06] (XV3), Corolla [96>02] (E11), Corolla [97>01] (E11) Hatchback, Corolla [97>01] (E11) Liftback, Corolla [97>01] (E11) Sedan, Corolla [97>01] (E11) Wagon, Corolla [00>06] (E12), Corolla [01>06] (E12) Hatchback, Corolla [01>06] (E12) Sedan, Corolla [01>06] (E12) Verso, Highlander [00>07] (U2), HiLux [04>15] PickUp, HiLux [04>15] SW4, Land Cruiser [96>04] (J9), Matrix [02>08] (E13), RAV4 [00>05] (A2), Sequoia I [00>07] (K3/K4), Sienna [97>03] (L1), Sienna [03>10] (L2), Sienna [10>] (L3), Solara [00>09] (V2/V3), Tacoma [04>15] (N2), Tundra [00>06] (K3/K4).

**VOLKSWAGEN:** Touareg [18>] (CR7).

## AIRBAG

**AUDI:** A3 [12>] (8V1), A3 [12>] (8VA) Sportback, A3 [14>] (8V7) Cabrio, A3 [14>] (8VS) Sedan, A4 [07>15] (8K2), A4 [07>15] (8K5) Avant, A4 [09>15] (8KH) Avant Allroad, A5 [07>16] (8T3) Coupé, A5 [09>16] (8F7) Cabrio, A5 [09>16] (8TA) Sportback, Q2 [16>] (GA), Q3 [11>18] (8UB), Q3 [19>] (F3), Q5 [08>16] (8RB/83B), RS3 [15>] (8VA) Sportback, RS3 [17>] (8VS) Sedan, RS4 [13>16] (8K5) Avant, RS5 [10>16] (8T3) Coupé, RS5 [13>16] (8F7) Cabrio, S1 [13>18] (8XF), S1 [13>18] (8XK) Sportback, S3 [14>] (8V1), S3 [14>] (8V7) Cabrio, S3 [14>] (8VA) Sportback, S3



Mercato  
EUROPA

Mercato  
NORD AMERICA

Mercato  
BRASILE

Mercato  
INDIA

[14>] (8VS) Sedan, S4 [08>15] (8K2), S4 [08>15] (8K5) Avant, S5 [07>16] (8T3) Coupé, S5 [09>16] (8F7) Cabrio, S5 [09>16] (8TA) Sportback, SQ2 [18>] (GA), SQ5 [13>16] (8RB), TT [14>] (8S3) Coupé, TT [14>] (8S3) S Coupé, TT [14>] (8S9) Roadster, TT [14>] (8S9) S Roadster, TT [16>] (8S3) RS Coupé, TT [16>] (8S9) RS Roadster.

**VOLKSWAGEN:** Arteon [17>] (3H7), Golf VII [12>] (5G1), Golf VII [14>] (BA5) Variant, Golf VII [14>] (BE1) EV, Golf VII [15>] (AM1) Sportsvan, Jetta [18>] (BU3), Passat B8 [14>] (3G2/CB2), Passat B8 [14>] (3G5/CB5) Variant, Passat B8 [15>] (3G5/CB5) Variant Alltrack, Tiguan [16>] (AD1/BW2).

**VOLVO:** S90 II [16>], V90 II [16>], V90 II [17>] Cross Country, XC60 II [17>], XC90 II [15>].

### CAMBIO AUTOMATICO

**AUDI:** A3 [12>] (8V1), A3 [12>] (8VA) Sportback, A3 [14>] (8V7) Cabrio, A3 [14>] (8VS) Sedan, Q2 [16>] (GA), Q3 [19>] (F3), RS3 [15>] (8VA) Sportback, RS3 [17>] (8VS) Sedan, S3 [14>] (8V1), S3 [14>] (8V7) Cabrio, S3 [14>] (8VA) Sportback, S3 [14>] (8VS) Sedan, SQ2 [18>] (GA), TT [14>] (8S3) Coupé, TT [14>] (8S3) S Coupé, TT [14>] (8S9) Roadster, TT [14>] (8S9) S Roadster, TT [16>] (8S3) RS Coupé, TT [16>] (8S9) RS Roadster.

**MERCEDES-BENZ:** A [97>04] (168), A [01>04] (168) L, A [04>12] (169), A [04>12] (169) Coupé, A [12>18] (176), AMG GT [15>] (190) Coupé, AMG GT [17>] (190) Roadster, B [05>11] (245), B [11>19] (246), CLA [13>19] (117), CLA [15>19] (117) Shooting Brake, GLA [13>] (156), SLS [10>14] (197) Coupé, SLS [11>14] (197) Roadster.

**VOLKSWAGEN:** Arteon [17>] (3H7), Beetle (Maggiolino) [11>] (5C1/5C2), Beetle (Maggiolino) [13>] (5C7/5C8) Cabriolet, Golf VI [08>13] (5K1), Golf VI [09>14] (521) Plus, Golf VII [12>] (5G1), Golf VII [14>] (BA5) Variant, Golf VII [15>] (AM1) Sportsvan, Jetta [10>18] (162), Jetta [18>] (BU3), Passat B8 [14>] (3G2/CB2), Passat B8 [14>] (3G5/CB5) Variant, Passat B8 [15>] (3G5/CB5) Variant Alltrack, Rabbit V [06>14], Tiguan [16>] (AD1/BW2).

**VOLVO:** S80 I [98>06], S90 II [16>], V60 II [18>], V60 II [19>] Cross Country, V90 II [16>], V90 II [17>] Cross Country, XC40 [17>], XC60 II [17>], XC90 I [03>14], XC90 II [15>].

### CENTRALINA RILEVAMENTO OSTACOLO LATO DESTRO

**VOLVO:** S60 III [19>], S90 II [16>], V60 II [18>], V60 II [19>] Cross Country, V90 II [16>], V90 II [17>] Cross Country, XC40 [17>], XC60 II [17>], XC90 II [15>].

### CENTRALINA RILEVAMENTO OSTACOLO LATO SINISTRO

**VOLVO:** S60 III [19>], S90 II [16>], V60 II [18>], V60 II [19>] Cross Country, V90 II [16>], V90 II [17>] Cross Country, XC40 [17>], XC60 II [17>], XC90 II [15>].

### CLIMATIZZATORE

**VOLVO:** S60 III [19>], S90 II [16>], V60 II [18>], V60 II [19>] Cross Country, V90 II [16>], V90 II [17>] Cross Country, XC60 II [17>], XC90 II [15>].

Novità DASHBOARD

Copertura Marche

Link

## CONTROLLO DISTANZA

**BMW:** 1 [11>19] (F20), 1 [12>19] (F21), 2 [14>] (F22), 2 [14>] (F23) Cabrio, 2 [15>] (F87) M, 3 [12>18] (F30), 3 [12>19] (F31) Touring, 3 [13>] (F34) Gran Turismo, 3 [14>] (F80) M, 3 [19>] (G20), 3 [19>] (G21) Touring, 4 [14>] (F32) Coupé, 4 [14>] (F33) Cabrio, 4 [14>] (F36) Gran Coupé, 4 [14>] (F82) M Coupé, 4 [14>] (F83) M Cabrio, 5 [09>17] (F07) Gran Turismo, 5 [10>16] (F10), 5 [10>16] (F11) Touring, 5 [17>] (G30), 5 [17>] (G31) Touring, 6 [11>] (F06) Gran Coupé, 6 [11>] (F12) Cabrio, 6 [11>] (F13) Coupé, 6 [18>] (G32) Gran Turismo, 7 [08>15] (F01), 7 [08>15] (F02), 7 [10>12] (F04) Hybrid, 7 [15>] (G11), 7 [15>] (G12), 8 [19>] (G14) Cabrio, 8 [19>] (G15) Coupé, 8 [19>] (G16) Gran Coupé, 8 [19>] (F91) M Cabrio, 8 [19>] (F92) M Coupé, i3 [13>] (I01), X1 [15>] (F48), X3 [10>17] (F25), X3 [18>] (G01), X3 [19>] (F97) M, X4 [14>18] (F26), X4 [18>] (G02), X4 [19>] (F98) M, X5 [13>18] (F15), X5 [15>18] (F85) M, X5 [18>] (G05), X6 [14>] (F16), X6 [15>] (F86) M, X7 [19>] (G07).

## INIEZIONE BENZINA

**VOLVO:** S60 III [19>], S90 II [16>], V60 II [18>], V60 II [19>] Cross Country, V90 II [16>], V90 II [17>] Cross Country, XC40 [17>], XC60 II [17>], XC90 II [15>].

## INIEZIONE DIESEL

**AUDI:** A3 [12>] (8V1), A3 [12>] (8VA) Sportback, A3 [14>] (8V7) Cabrio, A3 [14>] (8VS) Sedan, A4 [07>15] (8K2), A4 [07>15] (8K5) Avant, A4 [09>15] (8KH) Avant Allroad, A5 [07>16] (8T3) Coupé, A5 [09>16] (8F7) Cabrio, A5 [09>16] (8TA) Sportback, Q2 [16>] (GA), Q3 [19>] (F3), Q5 [08>16] (8RB/83B), TT [14>] (8S3) Coupé, TT [14>] (8S9) Roadster.

**CHEVROLET:** Cruze [16>] (J400) Hatchback, Cruze [16>] (J400) Sedan, Trax [13>].

**HYUNDAI:** Accent V [11>17] (RB).

**KIA:** Rio [11>17] (UB/QB).

**VOLKSWAGEN:** Arteon [17>] (3H7), Golf VII [12>] (5G1), Golf VII [14>] (BA5) Variant, Golf VII [15>] (AM1) Sportsvan, Passat B8 [14>] (3G2/CB2), Passat B8 [14>] (3G5/CB5) Variant, Passat B8 [15>] (3G5/CB5) Variant Alltrack, Tiguan [16>] (AD1/BW2).

## SENSORE ANGOLO STERZATA

**VOLVO:** S60 III [19>], S90 II [16>], V60 II [18>], V60 II [19>] Cross Country, V90 II [16>], V90 II [17>] Cross Country, XC40 [17>], XC60 II [17>], XC90 II [15>].

## SISTEMA DI DOSAGGIO DELL'AGENTE RIDUCENTE

**VOLVO:** V60 II [18>], V60 II [19>] Cross Country, XC40 [17>], XC90 II [15>].

Mercato  
EUROPA

Mercato  
NORD AMERICA

Mercato  
BRASILE

Mercato  
INDIA

## STRUMENTAZIONE

**AUDI:** A4 [15>] (8W2), A4 [15>] (8W5) Avant, A4 [16>] (8WH) Avant Allroad, A5 [16>] (F53) Coupé, A5 [16>] (F57) Cabrio, A5 [16>] (F5A) Sportback, Q5 [17>] (FY), Q7 [15>] (4MB), R8 [15>] (4S3/4SP) Coupé, R8 [16>] (4S9/4SR) Spyder, RS4 [17>] (8W5) Avant, RS5 [17>] (F53) Coupé, S4 [16>] (8W2), S4 [16>] (8W5) Avant, S5 [16>] (F53) Coupé, S5 [16>] (F57) Cabrio, S5 [16>] (F5A) Sportback, SQ5 [17>] (FY), SQ7 [16>] (4MB).

**BENTLEY:** Bentayga [15>].

## TELECAMERA 360°

**VOLVO:** S90 II [16>], V90 II [16>], V90 II [17>] Cross Country, XC60 II [17>], XC90 II [15>].

## TELECAMERA ANTERIORE

**INFINITI:** Q30 [15>] (H15), QX30 [16>] (H15).

## TELECAMERA MULTIFUNZIONE

**AUDI:** A3 [12>] (8V1), A3 [12>] (8VA) Sportback, A3 [14>] (8V7) Cabrio, A3 [14>] (8VS) Sedan, A4 [15>] (8W2), A4 [15>] (8W5) Avant, A4 [16>] (8WH) Avant Allroad, A5 [16>] (F53) Coupé, A5 [16>] (F57) Cabrio, A5 [16>] (F5A) Sportback, Q2 [16>] (GA), Q3 [19>] (F3), Q5 [17>] (FY), Q7 [15>] (4MB), RS3 [15>] (8VA) Sportback, RS3 [17>] (8VS) Sedan, RS4 [17>] (8W5) Avant, RS5 [17>] (F53) Coupé, S3 [14>] (8V1), S3 [14>] (8V7) Cabrio, S3 [14>] (8VA) Sportback, S3 [14>] (8VS) Sedan, S4 [16>] (8W2), S4 [16>] (8W5) Avant, S5 [16>] (F53) Coupé, S5 [16>] (F57) Cabrio, S5 [16>] (F5A) Sportback, SQ2 [18>] (GA), SQ5 [17>] (FY), SQ7 [16>] (4MB), TT [14>] (8S3) Coupé, TT [14>] (8S3) S Coupé, TT [14>] (8S9) Roadster, TT [14>] (8S9) S Roadster, TT [16>] (8S3) RS Coupé, TT [16>] (8S9) RS Roadster.

**BENTLEY:** Bentayga [15>], Continental [18>] GT, Continental [18>] GTC.

**PORSCHE:** Macan [14>] (95B).

**VOLKSWAGEN:** Arteon [17>] (3H7), Atlas [17>] (CA1), Eos [11>] (1F8), Golf VI [08>13] (5K1), Golf VI [09>13] (AJ5) Variant, Golf VI [09>14] (521) Plus, Golf VI [11>15] (517) Cabriolet, Golf VII [12>] (5G1), Golf VII [14>] (BA5) Variant, Golf VII [14>] (BE1) EV, Golf VII [15>] (AM1) Sportsvan, Jetta [10>14] (AJ) SportWagen, Jetta [18>] (BU3), Passat B6 [04>10] (3C2), Passat B6 [05>10] (3C5) Variant, Passat B7 [10>14] (362), Passat B7 [10>14] (365) Variant, Passat B7 [12>] NMS (A3/A4), Passat B8 [14>] (3G2/CB2), Passat B8 [14>] (3G5/CB5) Variant, Passat B8 [15>] (3G5/CB5) Variant Alltrack, Passat CC [08>12] (357), Passat CC [12>17] (358) Facelift, Rabbit V [06>14], Tiguan [07>12] (5N1), Tiguan [12>17] (5N2) Facelift, Tiguan [16>] (AD1/BW2).

Novità DASHBOARD

Copertura Marche

Link

## Mercato BRASILE

### ABS

**BENTLEY:** Bentayga [15>].

**CITROËN:** C 4 Cactus | BR.

**FERRARI:** 599 GTB Fiorano [06>12] (F141) , 599 GTO [10>12] (F141).

**HONDA:** Accord | BR, City | BR, Civic | BR, CR-V | BR , Fit | BR, HR-V | BR, Odyssey | BR, Pilot | BR, Prelude | BR, WR-V | BR.

**JAC MOTORS:** J3 | BR.

**LAMBORGHINI:** Urus [18>].

**LEXUS:** ES 300 | BR , RX 350 | BR.

**MASERATI:** Quattroporte [04>07] (M139) , Quattroporte [07>12] (M139 EV07).

**PEUGEOT:** 3008 | BR.

**SUZUKI:** SX4 S-Cross | BR.

**TOYOTA:** Corolla | BR , Hi-Lux | BR , RAV4 | BR.

### AIRBAG

**AUDI:** A1 | BR , A4 | BR.

**VOLKSWAGEN:** Golf | BR , Jetta | BR , Passat | BR , T-Cross | BR , Tiguan | BR.

### CAMBIO AUTOMATICO

**MERCEDES-BENZ:** A | BR , B | BR , CLA | BR , GLA | BR.

**VOLKSWAGEN:** Golf | BR , Jetta | BR , Passat | BR , Polo | BR , T-Cross | BR , Tiguan | BR , Up! | BR.

### CONTROLLO DISTANZA

**BMW:** X4 | BR.

### STRUMENTAZIONE

**BENTLEY:** Bentayga [15>].

### TELECAMERA MULTIFUNZIONE

**BENTLEY:** Bentayga [15>], Continental [18>] GT, Continental [18>] GTC.

**PORSCHE:** Macan [14>] (95B).

Mercato  
EUROPA

Mercato  
NORD AMERICA

Mercato  
BRASILE

Mercato  
INDIA

**VOLKSWAGEN:** Bora | BR, Eos | BR Golf | BR, Jetta | BR, Passat | BR, Scirocco | BR, T-Cross | BR, Tiguan | BR, Up! | BR.

## Mercato INDIA

### ABS

**AUDI:** A4 [15>] (8W2), A4 [15>] (8W5) Avant, A4 [16>] (8WH) Avant Allroad, A5 [16>] (F53) Coupé, A5 [16>] (F57) Cabrio, A5 [16>] (F5A) Sportback, A6 [18>] (4K2), A6 [18>] (4K5) Avant, A7 [18>] (4KA) Sportback, A8 [18>] (4N2), A8 [18>] (4N8) L, E-Tron [19>] (GE), Q5 [17>] (FY), Q7 [15>] (4MB), Q8 [18>] (4MN), RS4 [17>] (8W5) Avant, RS5 [17>] (F53) Coupé, S4 [16>] (8W2), S4 [16>] (8W5) Avant, S5 [16>] (F53) Coupé, S5 [16>] (F57) Cabrio, S5 [16>] (F5A) Sportback, S6 [19>] (4K2), S6 [19>] (4K5) Avant, S7 [19>] (4KA) Sportback, SQ5 [17>] (FY), SQ7 [16>] (4MB).

**BENTLEY:** Bentayga [15>].

**FERRARI:** 599 GTB Fiorano [06>12] (F141), 599 GTO [10>12] (F141).

**HONDA:** AccordVI [97>03] (CG) Coupé, AccordVI [98>03] (CG) Hatchback, AccordVI [98>03] (CG) Sedan, AccordVII [03>08] (CL) Sedan, AccordVII [03>08] (CL) Tourer, AccordVIII [08>13] (CS) Coupé, AccordVIII [08>13] (CU) Tourer, AccordVIII [08>13] (CU/CP) Sedan, Accord IX [13>17] (CT/CR) Coupé, Accord IX [13>17] (CT/CR) Sedan, Accord IX [14>15] (CT/CR) Hybrid, Accord X [18>] (CV) Hybrid, Accord X [18>] (CV) Sedan, Acty Van [99>], Airwave [05>10] (GJ), Amaze [13>], Ascot [94>97] (CE), Avancier [00>03] (TA), Ballade [11>], Brio [11>], BR-V [16>] (DG1), Capa [98>02] (GA), City III [98>02], City IV [02>08], City V [08>], City VI [13>], CivicVI [95>00] Fastback, CivicVI [99>01] Aerodeck, CivicVII [00>05] (ES) Hybrid, CivicVII [00>05] (EU) Hatchback, CivicVII [00>05] (EU) Sedan, CivicVII [01>05] (EM) Coupé, CivicVII [03>05] (ET) Sedan, CivicVIII [06>12] (FA/FD) Hybrid, CivicVIII [06>12] (FK/FN) Hatchback, CivicVIII [06>12] (FK/FN) Sedan, Civic IX [12>17] (FB/FG) Hatchback, Civic IX [12>17] (FB/FG) Hatchback Hybrid, Civic IX [14>18] (FB/FG) Wagon, Civic X [17>] (FC/FK) Coupé, Civic X [17>] (FC/FK) Hatchback, Civic X [17>] (FC/FK) Sedan, Crossroad [06>11] (RT), Crosstour [10>15], CR-V [95>07] (RD), CR-V [07>11] (RE), CR-V [12>18] (RM), CR-V [17>] (RW/RT), CR-X Del Sol [92>98] (EG), CR-Z [10>16] (ZF), Domani [93>97] (MA), Domani [97>00] (MB), Edix [04>09] (BE), Element [03>11] (YH), Elysion [04>14] (RR), Everus [11>15] (S1), Fit [03>14] (GD/GE), Fit [14>] (GK), Fit Shuttle [11>15] (GG/GP), Freed [08>16] (GB), Freed [12>16] (GP) Hybrid, Freed Spike [11>16] (GB), Freed Spike [12>16] (GP) Hybrid, FR-V [04>09] (BE), HR-V [98>05] (GH), HR-V [15>] (RU), Insight [00>06] (ZE1), Insight [09>14] (ZE2), Inspire [95>98] (UA1,UA3), Inspire [98>03] (UA4,UA5), Inspire [07>12] (CP3), Integra [02>07] (DC5), Integra [93>01] (DC1), Integra SJ [96>00] (EK3), Jazz [02>08] (GD), Jazz [08>14] (GE), Jazz [15>] (GK), LaGreat [99>04] (RL), Legend [96>04] (KA) Sedan, Legend [04>12] (KB) Sedan, Life [97>98] (JA), Life [98>08] (JB), Life [08>14] (JC), Logo [97>01] (GA), MDX [01>06] (YD1), MDX [06>12] (YD2), MDX [13>] (YD3), Mobilio [02>09] (GB), Mobilio [14>] (2NH), Mobilio Spike [03>08] (GK), MR-V [02>08] (YF), N-Box [12>16] (JF), NSX [92>05] (NA), NSX [16>] (NC), Odyssey [94>03] (RA), Odyssey [04>08] (RB1/RB2), Odyssey [08>13]

Novità DASHBOARD

Copertura Marche

Link

(RB3/RB4), Odyssey [14>] (RC1/RC2), Odyssey [05>10] (RL3/RL4), Odyssey [11>17] (RL5), Odyssey [18>] (RL6), Orthia [96>02] (EL), Partner [96>06] (EY), Partner [06>10] (GJ), Pilot [02>08] (YF), Pilot [09>15] (YF), Pilot [16>] (YF), Prelude [91>02] (BB), Rafaga [93>97] (CE), Ridgeline [06>15] (YK), Ridgeline [16>] (YK), S2000 [99>09] (AP), Saber [95>98] (UA), Saber [98>03] (UA), Shuttle [95>99], S-MX [96>02] (RH), Spirior [09>15], Step WGN [01>05] (RF), Step WGN [06>09] (RG), Step WGN [10>15] (RK), Stream [01>06] (RN), Stream [06>14] (RN), That's [02>08] (JD), Today [93>98] (JA/JW), Torneo [97>02] (CL/CF), Vamos [99>] (HM), Vezel [13>] (RU), Vigor [92>95] (CB/CC), Z [98>02] (PA), Zest [06>12] (JE).

**LAMBORGHINI:** Urus [18>].

**LEXUS:** ES (V1/V2/V3) 300 [91>03], ES (V3) 330 [01>06], GS(S1) 300 [93>05], GS(S1) 430 [00>05], IS (E1) 200 [99>05] Sedan, IS (E1) 200 [99>05] Wagon, IS (E1) 300 [01>05] Sedan, IS (E1) 300 [01>05] Wagon, LS (F1/F2) 400 [91>00], LS (F3) 430 [01>06], LX (J1) 470 [98>07], RX(U1) 300 [97>06], RX(U3) 300 [03>06] Wagon, RX(U3) 330 [03>09], RX(U3) 350 [06>09], SC (Z4) 430 [01>10].

**MASERATI:** Quattroporte [04>07] (M139), Quattroporte [07>12] (M139 EV07).

**SUZUKI:** Jimny [98>18] (SN), SX4 S-Cross [13>16] (AKK), SX4 S-Cross [16>] (AKK) Facelift.

**TOYOTA:** 4-Runner [89>02] (N18), 4-Runner [02>09] (N21), Alphard [02>08] (H10), Auris [06>12] (E15), Avalon [00>05] (X20), Avalon [05>12] (X30), Avensis [97>03] (T22) Liftback, Avensis [97>03] (T22) Sedan, Avensis [97>03] (T22) Wagon, Avensis [01>03] (M20) Verso, Avensis [03>08] (T25) Liftback, Avensis [03>08] (T25) Sedan, Avensis [03>08] (T25) Wagon, Aygo [05>13] (B10), Camry [86>01] (V2), Camry [01>06] (XV3), Celica [99>06] (T23), Century [98>16] (G50) Sedan, Corolla [96>02] (E11), Corolla [97>01] (E11) Hatchback, Corolla [97>01] (E11) Liftback, Corolla [97>01] (E11) Sedan, Corolla [97>01] (E11) Wagon, Corolla [00>06] (E12), Corolla [01>06] (E12) Hatchback, Corolla [01>06] (E12) Sedan, Corolla [01>06] (E12) Verso, Corolla [01>06] (E12) Wagon, Corolla [04>09] (R10) Verso, Corolla Altis [06>13] (E14), FJ Cruiser [07>14] (J1), Fortuner [04>15] (N5/N6), Highlander [00>07] (U2), Hi-Lux [04>15] Pick-Up, Hi-Lux [04>15] SW4, Innova [04>15] (N4), Ist [02>06] (P6), Kijang Innova [04>15] (N4), Kluger [03>07] (U2), Land Cruiser [96>04] (J9), Land Cruiser [98>02] (J10), Land Cruiser [02>08] (J12), Matrix [02>08] (E13), MR2 [99>05] (W3), Previa [90>06] (R1/R3), Prius [00>09] (NHV), RAV4 [00>05] (A2), Reiz [05>09] (X12), Sequoia I [00>07] (K3/K4), Sienna [97>03] (L1), Sienna [03>10] (L2), Sienna [10>] (L3), Solara [00>09] (V2/V3), Spacio [98>01] (E11), Tacoma [04>15] (N2), Tundra [00>06] (K3/K4), Vios [03>07] (P4), Yaris [99>05] (P1), Yaris [99>05] (P2) Verso.

**VOLKSWAGEN:** Touareg [18>] (CR7).

## AIRBAG

**AUDI:** A1 [11>18] (8X1/8XF), A1 [12>18] (8XA/8XK) Sportback, A3 [12>] (8V1), A3 [12>] (8VA) Sportback, A3 [14>] (8V7) Cabrio, A3 [14>] (8VS) Sedan, A4 [07>15] (8K2), A4 [07>15] (8K5) Avant, A4 [09>15] (8KH) Avant Allroad, A5 [07>16] (8T3) Coupé, A5 [09>16] (8F7) Cabrio, A5 [09>16] (8TA) Sportback, Q2 [16>] (GA), Q3 [11>18] (8UB),

Mercato  
EUROPA

Mercato  
NORD AMERICA

Mercato  
BRASILE

Mercato  
INDIA

Q3 [19>] (F3), Q3 [19>] (F3) Sportback, Q5 [08>16] (8RB/83B), RS3 [15>] (8VA) Sportback, RS3 [17>] (8VS) Sedan, RS4 [13>16] (8K5) Avant, RS5 [10>16] (8T3) Coupé, RS5 [13>16] (8F7) Cabrio, RSQ3 [13>18] (8UB), RSQ3 [19>] (F3), RSQ3 [19>] (F3) Sportback, S1 [13>18] (8XF), S1 [13>18] (8XK) Sportback, S3 [14>] (8V1), S3 [14>] (8V7) Cabrio, S3 [14>] (8VA) Sportback, S3 [14>] (8VS) Sedan, S4 [08>15] (8K2), S4 [08>15] (8K5) Avant, S5 [07>16] (8T3) Coupé, S5 [09>16] (8F7) Cabrio, S5 [09>16] (8TA) Sportback, SQ2 [18>] (GA), SQ5 [13>16] (8RB), TT [14>] (8S3) Coupé, TT [14>] (8S3) S Coupé, TT [14>] (8S9) Roadster, TT [14>] (8S9) S Roadster, TT [16>] (8S3) RS Coupé, TT [16>] (8S9) RS Roadster.

**SKODA:** Octavia [13>] (5E3), Superb B8 [15>] (3V3), Superb B8 [15>] (3V5) Wagon.

**VOLKSWAGEN:** Arteon [17>] (3H7), Golf VII [12>] (5G1), Golf VII [14>] (BA5) Variant, Golf VII [14>] (BE1) EV, Golf VII [15>] (AM1) Sportsvan, Jetta [18>] (BU3), Lamando [15>], Passat B8 [14>] (3G2/CB2), Passat B8 [14>] (3G5/CB5) Variant, Passat B8 [15>] (3G5/CB5) Variant Alltrack, Polo [17>] (AW), T-Cross [19>] (C1), Tiguan [16>] (AD1/BW2), Touran [15>] (5T), T-Roc [17>] (A11).

**VOLVO:** S90 II [16>], V90 II [16>], V90 II [17>] Cross Country, XC60 II [17>], XC90 II [15>].

## CAMBIO AUTOMATICO

**AUDI:** A1 [19>] (GBA) Sportback, A3 [12>] (8V1), A3 [12>] (8VA) Sportback, A3 [14>] (8V7) Cabrio, A3 [14>] (8VS) Sedan, Q2 [16>] (GA), Q3 [19>] (F3), Q3 [19>] (F3) Sportback, RS3 [15>] (8VA) Sportback, RS3 [17>] (8VS) Sedan, RSQ3 [19>] (F3), RSQ3 [19>] (F3) Sportback, S3 [14>] (8V1), S3 [14>] (8V7) Cabrio, S3 [14>] (8VA) Sportback, S3 [14>] (8VS) Sedan, SQ2 [18>] (GA), TT [14>] (8S3) Coupé, TT [14>] (8S3) S Coupé, TT [14>] (8S9) Roadster, TT [14>] (8S9) S Roadster, TT [16>] (8S3) RS Coupé, TT [16>] (8S9) RS Roadster.

**MERCEDES-BENZ:** A [97>04] (168), A [01>04] (168) L, A [04>12] (169), A [04>12] (169) Coupé, A [12>18] (176), AMG GT [15>] (190) Coupé, AMG GT [17>] (190) Roadster, B [05>11] (245), B [11>19] (246), CLA [13>19] (117), CLA [15>19] (117) Shooting Brake, GLA [13>] (156), SLS [10>14] (197) Coupé, SLS [11>14] (197) Roadster, Vaneo [02>05] (414).

**SKODA:** Citigo [12>] (NF1), Fabia [15>] (NJ), Fabia [15>] (NJ) Kombi, Kamiq [19>] (NW4), Karoq [17>] (NU7), Kodiaq [17>] (NS7), Octavia [04>13] (1Z3), Octavia [04>13] (1Z5) Kombi, Octavia [13>] (5E3), Octavia [13>] (5E5) Kombi, Rapid [13>] (NH1) Spaceback, Rapid [13>] (NH3), Scala [19>] (NW1), Superb B8 [15>] (3V3), Superb B8 [15>] (3V5) Wagon, Yeti [09>17] (5L7).

**VOLKSWAGEN:** Arteon [17>] (3H7), Beetle (Maggiolino) [11>] (5C1/5C2), Beetle (Maggiolino) [13>] (5C7/5C8) Cabriolet, Bora [06>13] (1K2), Golf VI [08>13] (5K1), Golf VI [09>14] (521) Plus, Golf VII [12>] (5G1), Golf VII [14>] (BA5) Variant, Golf VII [15>] (AM1) Sportsvan, Jetta [10>18] (162), Jetta [18>] (BU3), Lamando [15>], Passat B8 [14>] (3G2/CB2), Passat B8 [14>] (3G5/CB5) Variant, Passat B8 [15>] (3G5/CB5) Variant Alltrack, Polo [14>17] (6C1), Polo [17>] (AW), Rabbit V [06>14], T-Cross [19>] (C1), Tiguan [16>] (AD1/BW2), Touran [15>] (5T), T-Roc [17>] (A11), Up! [11>] (121/122).

Novità DASHBOARD

Copertura Marche

Link

**VOLVO:** S80 I [98>06], S90 II [16>], V60 II [18>], V60 II [19>] Cross Country, V90 II [16>], V90 II [17>] Cross Country, XC40 [17>], XC60 II [17>], XC90 I [03>14], XC90 II [15>].

#### CENTRALINA RILEVAMENTO OSTACOLO LATO DESTRO

**VOLVO:** S60 III [19>], S90 II [16>], V60 II [18>], V60 II [19>] Cross Country, V90 II [16>], V90 II [17>] Cross Country, XC40 [17>], XC60 II [17>], XC90 II [15>].

#### CENTRALINA RILEVAMENTO OSTACOLO LATO SINISTRO

**VOLVO:** S60 III [19>], S90 II [16>], V60 II [18>], V60 II [19>] Cross Country, V90 II [16>], V90 II [17>] Cross Country, XC40 [17>], XC60 II [17>], XC90 II [15>].

#### CLIMATIZZATORE

**VOLVO:** S60 III [19>], S90 II [16>], V60 II [18>], V60 II [19>] Cross Country, V90 II [16>], V90 II [17>] Cross Country, XC60 II [17>], XC90 II [15>].

#### CONTROLLO DISTANZA

**BMW:** 1 [11>19] (F20), 1 [12>19] (F21), 2 [14>] (F22), 2 [14>] (F23) Cabrio, 2 [15>] (F87) M, 3 [12>18] (F30), 3 [12>19] (F31) Touring, 3 [12>19] (F35) Long, 3 [13>] (F34) Gran Turismo, 3 [14>] (F80) M, 3 [19>] (G20), 3 [19>] (G21) Touring, 4 [14>] (F32) Coupé, 4 [14>] (F33) Cabrio, 4 [14>] (F36) Gran Coupé, 4 [14>] (F82) M Coupé, 4 [14>] (F83) M Cabrio, 5 [09>17] (F07) Gran Turismo, 5 [10>16] (F10), 5 [10>16] (F11) Touring, 5 [17>] (G30), 5 [17>] (G31) Touring, 5 [17>] (G38) Long, 6 [11>] (F06) Gran Coupé, 6 [11>] (F12) Cabrio, 6 [11>] (F13) Coupé, 6 [18>] (G32) Gran Turismo, 7 [08>15] (F01), 7 [08>15] (F02), 7 [10>12] (F04) Hybrid, 7 [15>] (G11), 7 [15>] (G12), 8 [19>] (G14) Cabrio, 8 [19>] (G15) Coupé, 8 [19>] (G16) Gran Coupé, 8 [19>] (F91) M Cabrio, 8 [19>] (F92) M Coupé, i3 [13>] (I01), X1 [15>] (F48), X1 [16>] (F49) Long, X3 [10>17] (F25), X3 [18>] (G01), X3 [18>] (G08) Long, X3 [19>] (F97) M, X4 [14>18] (F26), X4 [18>] (G02), X4 [19>] (F98) M, X5 [13>18] (F15), X5 [15>18] (F85) M, X5 [18>] (G05), X6 [14>] (F16), X6 [15>] (F86) M, X7 [19>] (G07).

**TOYOTA:** Supra [19>] (J29/DB).

#### INIEZIONE BENZINA

**VOLVO:** S60 III [19>], S90 II [16>], V60 II [18>], V60 II [19>] Cross Country, V90 II [16>], V90 II [17>] Cross Country, XC40 [17>], XC60 II [17>], XC90 II [15>].

#### INIEZIONE DIESEL

**AUDI:** A3 [12>] (8V1), A3 [12>] (8VA) Sportback, A3 [14>] (8V7) Cabrio, A3 [14>] (8VS) Sedan, A4 [07>15] (8K2),



Mercato  
EUROPA

Mercato  
NORD AMERICA

Mercato  
BRASILE

Mercato  
INDIA

A4 [07>15] (8K5) Avant, A4 [09>15] (8KH) Avant Allroad, A5 [07>16] (8T3) Coupé, A5 [09>16] (8F7) Cabrio, A5 [09>16] (8TA) Sportback, Q2 [16>] (GA), Q3 [19>] (F3), Q3 [19>] (F3) Sportback, Q5 [08>16] (8RB/83B), TT [14>] (8S3) Coupé, TT [14>] (8S9) Roadster.

**CHEVROLET:** Cruze [16>] (J400) Hatchback, Cruze [16>] (J400) Sedan, Orlando [11>] (J309), Trax [13>].

**HYUNDAI:** Accent V [11>17] (RB), Creta [15>] (GS/GSR), Grand i10 [14>19] (BA), i20 [08>14] (PB), i30 [12>15] (GD), i30 [12>15] (GD) Kombi, i30 [15>17] (GD) Facelift, i30 [15>17] (GD) Kombi Facelift, ix20 [10>] (JC), Verna [11>17] (RBI), Xcent [14>] (BA), OPEL: Astra-J [09>15], Astra-J [09>15] Station Wagon, Astra-J [12>15] Sedan, Astra-K [15>], Astra-K [15>] Station Wagon, Cascada [13>], Crossland X [17>], Grandland X [17>], Insignia-A [13>16] Hatchback Facelift, Insignia-A [13>16] Sedan Facelift, Insignia-A [13>16] Station Wagon Facelift, Insignia-B [17>] Country Tourer, Insignia-B [17>] Grand Sport, Insignia-B [17>] Sports Tourer, Meriva-B [10>17], Mokka [12>16], Mokka X [16>], Zafira-C [12>] Tourer.

**SKODA:** Karoq [17>] (NU7), Kodiaq [17>] (NS7), Octavia [13>] (5E3), Octavia [13>] (5E5) Kombi, Superb B8 [15>] (3V3), Superb B8 [15>] (3V5) Wagon.

**VOLKSWAGEN:** Arteon [17>] (3H7), Golf VII [12>] (5G1), Golf VII [14>] (BA5) Variant, Golf VII [15>] (AM1) Sportsvan, Passat B8 [14>] (3G2/CB2), Passat B8 [14>] (3G5/CB5) Variant, Passat B8 [15>] (3G5/CB5) Variant Alltrack, Tiguan [16>] (AD1/BW2), Touran [15>] (5T).

### SENSORE ANGOLO STERZATA

**VOLVO:** S60 III [19>], S90 II [16>], V60 II [18>], V60 II [19>] Cross Country, V90 II [16>], V90 II [17>] Cross Country, XC40 [17>], XC60 II [17>], XC90 II [15>].

### SISTEMA DI DOSAGGIO DELL'AGENTE RIDUCENTE

**VOLVO:** V60 II [18>], V60 II [19>] Cross Country, XC40 [17>], XC90 II [15>].

### STRUMENTAZIONE

**AUDI:** A4 [15>] (8W2), A4 [15>] (8W5) Avant, A4 [16>] (8WH) Avant Allroad, A5 [16>] (F53) Coupé, A5 [16>] (F57) Cabrio, A5 [16>] (F5A) Sportback, Q5 [17>] (FY), Q7 [15>] (4MB), R8 [15>] (4S3/4SP) Coupé, R8 [16>] (4S9/4SR) Spyder, RS4 [17>] (8W5) Avant, RS5 [17>] (F53) Coupé, S4 [16>] (8W2), S4 [16>] (8W5) Avant, S5 [16>] (F53) Coupé, S5 [16>] (F57) Cabrio, S5 [16>] (F5A) Sportback, SQ5 [17>] (FY), SQ7 [16>] (4MB).

**BENTLEY:** Bentayga [15>].

### TELECAMERA 360°

**VOLVO:** S90 II [16>], V90 II [16>], V90 II [17>] Cross Country, XC60 II [17>], XC90 II [15>].

Novità DASHBOARD

Copertura Marche

Link

## TELECAMERA MULTIFUNZIONE

**AUDI:** A1 [19>] (GBA) Sportback, A3 [12>] (8V1), A3 [12>] (8VA) Sportback, A3 [14>] (8V7) Cabrio, A3 [14>] (8VS) Sedan, A4 [15>] (8W2), A4 [15>] (8W5) Avant, A4 [16>] (8WH) Avant Allroad, A5 [16>] (F53) Coupé, A5 [16>] (F57) Cabrio, A5 [16>] (F5A) Sportback, Q2 [16>] (GA), Q3 [19>] (F3), Q3 [19>] (F3) Sportback, Q5 [17>] (FY), Q7 [15>] (4MB), RS3 [15>] (8VA) Sportback, RS3 [17>] (8VS) Sedan, RS4 [17>] (8W5) Avant, RS5 [17>] (F53) Coupé, RSQ3 [19>] (F3), RSQ3 [19>] (F3) Sportback, S3 [14>] (8V1), S3 [14>] (8V7) Cabrio, S3 [14>] (8VA) Sportback, S3 [14>] (8VS) Sedan, S4 [16>] (8W2), S4 [16>] (8W5) Avant, S5 [16>] (F53) Coupé, S5 [16>] (F57) Cabrio, S5 [16>] (F5A) Sportback, SQ2 [18>] (GA), SQ5 [17>] (FY), SQ7 [16>] (4MB), TT [14>] (8S3) Coupé, TT [14>] (8S3) S Coupé, TT [14>] (8S9) Roadster, TT [14>] (8S9) S Roadster, TT [16>] (8S3) RS Coupé, TT [16>] (8S9) RS Roadster.

**BENTLEY:** Bentayga [15>], Continental [18>] GT, Continental [18>] GTC.

**PORSCHE:** Macan [14>] (95B).

**SKODA:** Citigo [12>] (NF1), Citigo [20>] (NF1) EV, Kamiq [19>] (NW4), Karoq [17>] (NU7), Kodiaq [17>] (NS7), Octavia [13>] (5E3), Octavia [13>] (5E5) Kombi, Scala [19>] (NW1), Superb B8 [15>] (3V3), Superb B8 [15>] (3V5) Wagon.

**VOLKSWAGEN:** Arteon [17>] (3H7), Atlas [17>] (CA1), Bora [06>13] (1K2), Eos [11>] (1F8), Golf VI [08>13] (5K1), Golf VI [09>13] (AJ5) Variant, Golf VI [09>14] (521) Plus, Golf VI [11>15] (517) Cabriolet, Golf VII [12>] (5G1), Golf VII [14>] (BA5) Variant, Golf VII [14>] (BE1) EV, Golf VII [15>] (AM1) Sportsvan, Jetta [10>14] (AJ) SportWagen, Jetta [18>] (BU3), Passat B6 [04>10] (3C2), Passat B6 [05>10] (3C5) Variant, Passat B7 [10>14] (362), Passat B7 [10>14] (365) Variant, Passat B7 [12>] NMS (A3/A4), Passat B8 [14>] (3G2/CB2), Passat B8 [14>] (3G5/CB5) Variant, Passat B8 [15>] (3G5/CB5) Variant Alltrack, Passat CC [08>12] (357), Passat CC [12>17] (358) Facelift, Polo [17>] (AW), Rabbit V [06>14], Scirocco [08>17] (137/138), Sharan [10>] (7N1/7N2), T-Cross [19>] (C1), Teramont [17>] (CA1), Tiguan [07>12] (5N1), Tiguan [12>17] (5N2) Facelift, Tiguan [16>] (AD1/BW2), Touran [06>10] (1T2) Facelift, Touran [10>15] (1T3) Facelift, > (121) EV, Touran [15>] (5T), T-Roc [17>] (A11), Up! [11>] (121/122), Up! [14>] Vento [10>] (162).

Mercato  
EUROPA

Mercato  
NORD AMERICA

Mercato  
BRASILE

Mercato  
INDIA

Novità DASHBOARD

Copertura Marche

Link

# Copertura Marche

## CAR

ABARTH  
 ACURA  
 ALFA ROMEO  
 ASTON MARTIN  
 AUDI  
 AUTOBIANCHI  
 BMW  
 BRILLIANCE  
 BUICK  
 BYD  
 CADILLAC  
 CHANGAN  
 CHERY  
 CHEVROLET  
 CHRYSLER  
 CITROEN  
 DACIA  
 DAEWOO  
 DAIHATSU  
 DODGE  
 DR  
 DS  
 FAW  
 FIAT  
 FORD  
 GAZ  
 GENESIS  
 GMC  
 GONOW  
 GREAT WALL  
 HOLDEN  
 HONDA  
 HUMMER  
 HYUNDAI  
 IKCO  
 INFINITI  
 INNOCENTI  
 ISUZU  
 JAC MOTORS  
 JAGUAR  
 JEEP

KATAY  
 KIA  
 LADA  
 LANCIA  
 LAND ROVER  
 LEXUS  
 LIFAN  
 LINCOLN  
 LOTUS  
 MAHINDRA  
 MARUTI  
 MAYBACH  
 MAZDA  
 MERCEDES-BENZ  
 MERCURY FORD  
 MG  
 MINI  
 MITSUBISHI  
 NISSAN  
 OPEL  
 PERODUA  
 PEUGEOT  
 PLYMOUTH  
 PORSCHE  
 RAVON  
 RENAULT  
 RENAULT SAMSUNG  
 ROVER  
 SAAB  
 SATURN  
 SCION  
 SEAT  
 SKODA  
 SMART  
 SPERANZA  
 SSANGYONG  
 SUBARU  
 SUZUKI  
 TATA  
 TOYOTA  
 UAZ  
 VAZ

VOLKSWAGEN  
 VOLVO  
 WULING

## SUPERCAR

ALFA ROMEO  
 ASTON MARTIN  
 BENTLEY  
 BUGATTI  
 CHEVROLET  
 DODGE  
 FORD  
 LAMBORGHINI  
 McLAREN  
 PORSCHE  
 ROLLS-ROYCE  
 FERRARI  
 MASERATI  
 MORGAN  
 PAGANI

## VEICOLI LEGGERI

AGRALE  
 CHEVROLET  
 CITROEN  
 DACIA  
 DAIHATSU  
 DFSK  
 DODGE  
 FIAT  
 FORD  
 GAZ  
 GMC  
 GREAT WALL  
 HAFEI  
 HYUNDAI  
 ISUZU  
 IVECO  
 KIA  
 LAND ROVER

### LEGENDA



- Marche che **presentano** aggiornamenti in questa versione
- Marche che **non presentano** aggiornamenti in questa versione

LDV  
 MAHINDRA  
 MAN  
 MAZDA  
 MERCEDES-BENZ  
 MERCEDES-BENZ (LATAM /  
 ASIA PACIFIC)  
**MITSUBISHI**  
**NISSAN**  
 OPEL  
**PEUGEOT**  
 PIAGGIO  
**RENAULT**  
 SKODA  
 SOLLERS FIAT  
 SSANGYONG  
 SUZUKI  
 TATA  
 TOYOTA  
 VICTORIA GIOTTI  
 VOLKSWAGEN

## GPL/METANO

BIGAS  
 BRC  
 EMER  
**LANDI RENZO**  
 LOVATO  
 OML  
 ROMANO AUTOGAS  
 TARTARINI  
 ZAVOLI

### LEGENDA

-  Marche che **presentano** aggiornamenti in questa versione
-  Marche che **non presentano** aggiornamenti in questa versione

[Novità DASHBOARD](#)

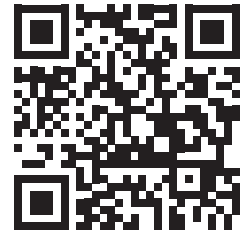
[Copertura Marche](#)

[Link](#)

## Link

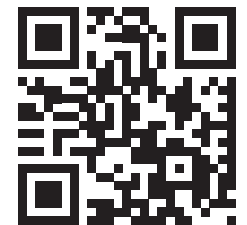
Maggiori dettagli circa queste funzionalità e la loro applicabilità ai veicoli, sono disponibili all'indirizzo:

**[www.texa.com/coverage](http://www.texa.com/coverage)**



Compatibilità e specifiche minime di sistema di IDC5:

**[www.texa.com/system](http://www.texa.com/system)**



## **AVVISO IMPORTANTE**

A partire dal mese di febbraio 2021, le nuove versioni del software IDC5 non supporteranno più gli strumenti AXONE 4 con numero di serie che inizia con DA8.

AXONE 4 Mini non supporterà più gli aggiornamenti da febbraio 2021

AXONE S non supporterà più gli aggiornamenti da aprile 2021

Per maggiori informazioni vi invitiamo a contattare il vostro rivenditore TEXA di fiducia.

[Novità DASHBOARD](#)[Copertura Marche](#)[Link](#)

## AVVERTENZA

I marchi e i segni distintivi delle case costruttrici di veicoli presenti in questo documento hanno il solo scopo di informare il lettore sulla potenziale idoneità dei prodotti TEXA qui menzionati ad essere utilizzati per i veicoli delle suddette case. I riferimenti alle marche, modelli e sistemi elettronici contenuti nel presente documento devono intendersi come puramente indicativi, in quanto i prodotti e software TEXA – essendo soggetti a continui sviluppi e aggiornamenti – al momento della lettura del seguente documento, potrebbero non essere in grado di effettuare la diagnosi di tutti i modelli e sistemi elettronici di ciascuna di tali case costruttrici. Pertanto, prima dell'acquisto, TEXA suggerisce di verificare, sempre, la "Lista copertura diagnosi" del prodotto e/o software presso i Rivenditori autorizzati TEXA. **Le immagini e le sagome dei veicoli presenti in questo documento hanno il solo scopo di facilitare l'individuazione della categoria di veicolo (auto, camion, moto ecc.) cui il prodotto e/o software TEXA è dedicato.** Dati, descrizione e illustrazioni possono variare rispetto a quanto descritto nel presente documento. TEXA S.p.A. si riserva il diritto di apportare qualsiasi modifica ai suoi prodotti, senza avviso alcuno.



Copyright TEXA S.p.A.

04/2020 - Italiano



**TEXA S.p.A.**  
Via 1 Maggio, 9  
31050 Monastier di Treviso  
Treviso - ITALY  
Tel. +39 0422 791311  
Fax +39 0422 791300  
[www.texa.com](http://www.texa.com) - [info.it@texa.com](mailto:info.it@texa.com)

**COMPANY WITH  
QUALITY SYSTEM  
CERTIFIED BY DNV GL  
= ISO 9001 =**